

WEINTEK LABS., INC.

USB Partition ID

Demo Project

Contents

- 1. Overview & Operation 1
- 2. Setting up the Screen 3
- 3. Addresses 6

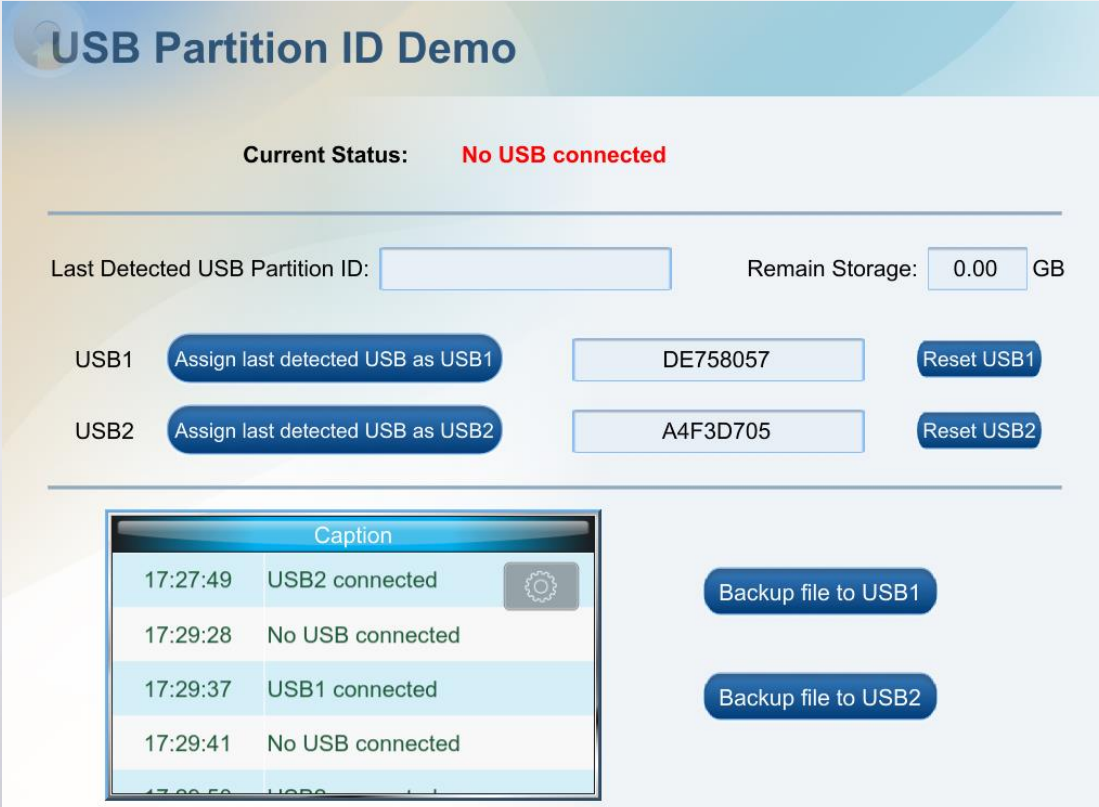
1. Overview & Operation

Overview

This demo project explains how to set USB partition ID to be used as HMI's USB1 or USB2, in order to identify USB disk and facilitate use with other objects, e.g. Backup object.

Operation

Step 1. Open the project file in EasyBuilder Pro, compile the project and then download it to HMI.



USB Partition ID Demo

Current Status: No USB connected

Last Detected USB Partition ID: Remain Storage: GB

USB1
Assign last detected USB as USB1
Reset USB1

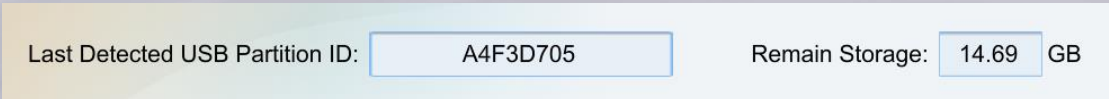
USB2
Assign last detected USB as USB2
Reset USB2

Caption	
17:27:49	USB2 connected
17:29:28	No USB connected
17:29:37	USB1 connected
17:29:41	No USB connected

Backup file to USB1

Backup file to USB2

Step 2. Insert a USB disk to HMI to see its partition ID and the remaining storage space.



Last Detected USB Partition ID: Remain Storage: GB

USB Partition ID



Step 3. Set the USB disk to be HMI's USB1 or USB2 and check the current corresponding partition IDs of USB1 and USB2 on HMI.

USB1	Assign last detected USB as USB1	DE758057
USB2	Assign last detected USB as USB2	A4F3D705

Step 4. Tap Reset USB button to remove the partition ID association.

DE758057	Reset USB1
	Reset USB2

Step 5. See current status.

Current Status: **USB2 Connected**

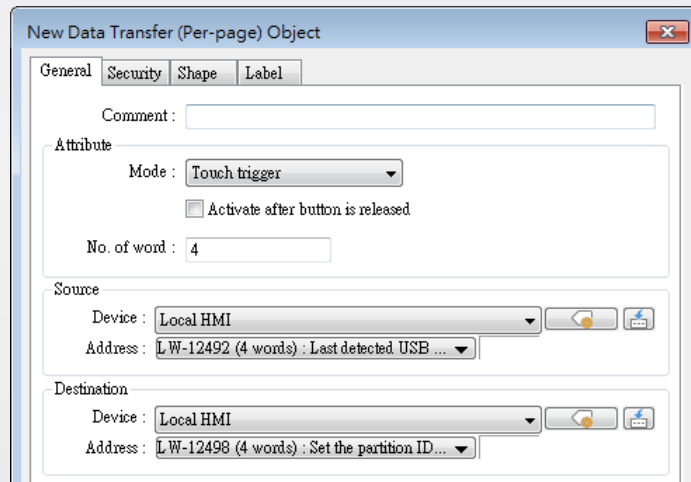
Step 6. After setting partition ID association, try back up an Event Log file to the desired position using the corresponding Backup object.

Caption	
17:27:49	USB2 connected
17:29:28	No USB connected
17:29:37	USB1 connected
17:29:41	No USB connected
17:29:50	USB2 connected

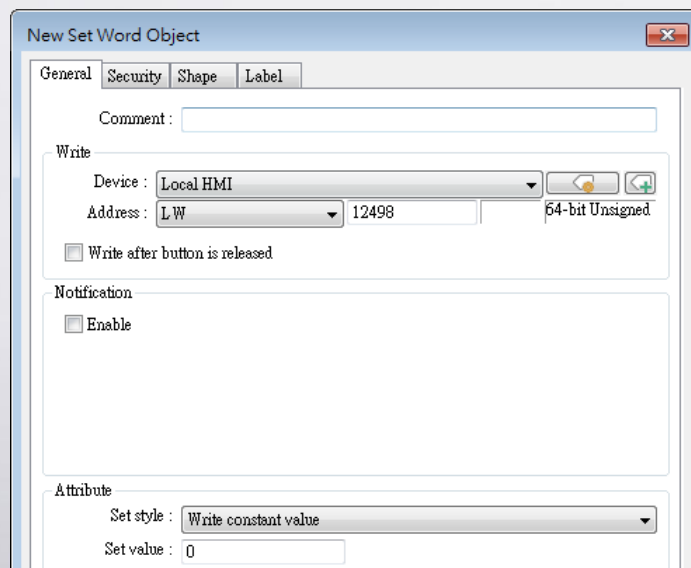
Backup file to USB1
Backup file to USB2

2. Setting up the Screen

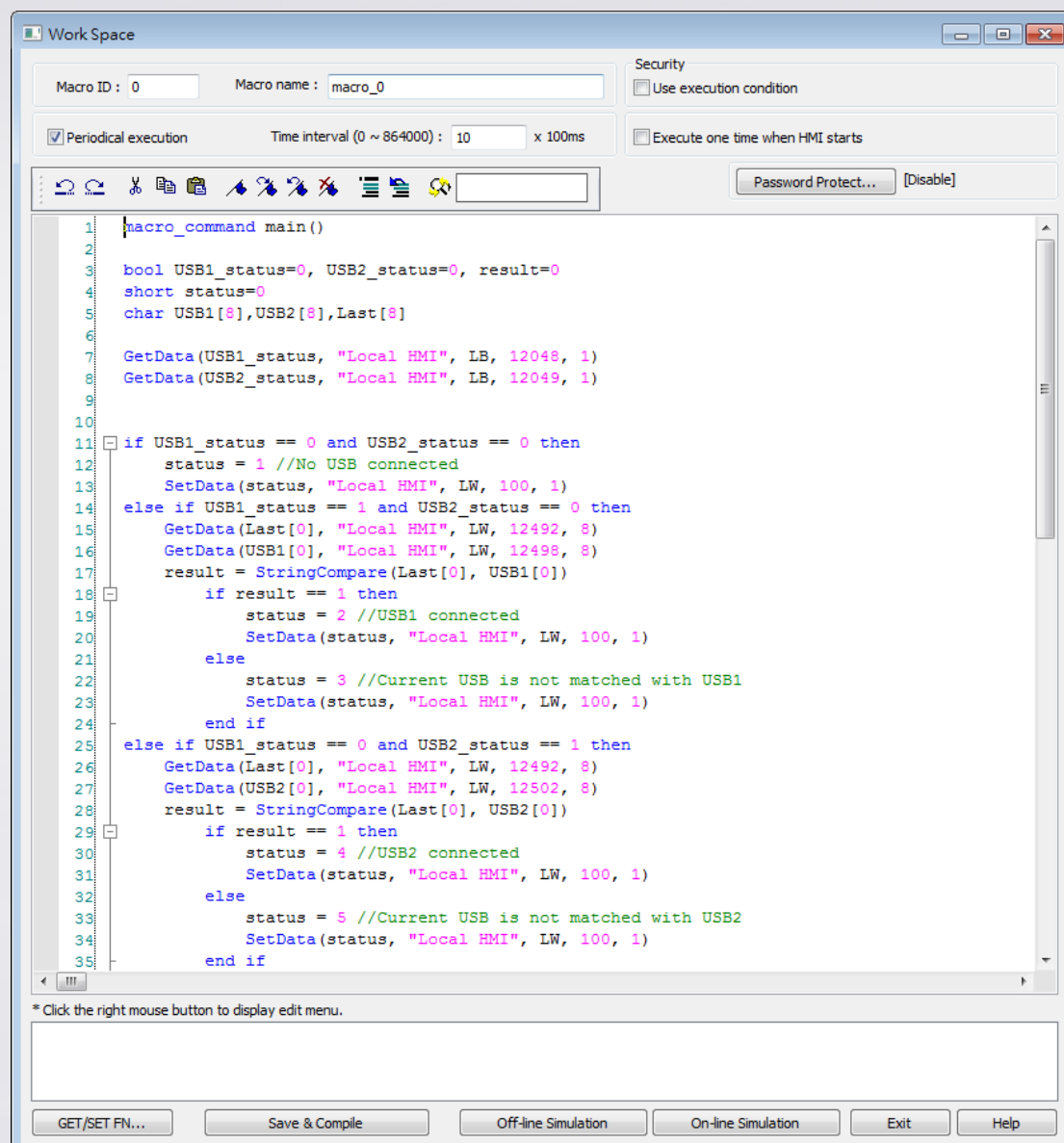
Step 1. Create 2 Data Transfer objects, set LW-12492 (last detected USB partition ID) as source and set LW-12498 / LW-12502 (set the partition ID to be used as USB1 / USB2) as destination.



Step 2. Create 2 Set Word objects (64-bit Unsigned) to write constant value 0 to LW-12498(USB1) / LW-12502(USB2) to reset USB.



Step 3. Build macro to get current status and select [Periodical execution].

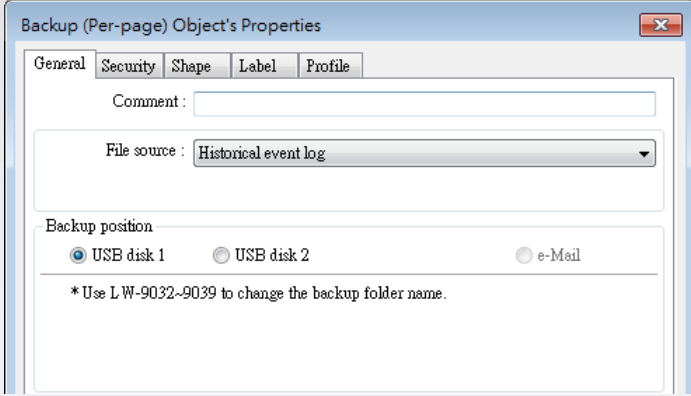


Step 4. Configure Event Log and Backup objects. The 2 Backup objects are used to back up data to USB1 and USB2 respectively.

Event (Alarm) Log

Category : All [3] [Edit category name mapping...](#)

No.	Category	Text	Mode	Condition	Read address	Notificati
1	0	No USB connected	WORD	== 1.00 (tolerance : 0.10, 0.20)	Local HMI: LW-100	Disable
2	0	USB1 connected	WORD	== 2.00 (tolerance : 0.10, 0.20)	Local HMI: LW-100	Disable
3	0	USB2 connected	WORD	== 4.00 (tolerance : 0.10, 0.20)	Local HMI: LW-100	Disable



Backup (Per-page) Object's Properties

General Security Shape Label Profile

Comment :

File source : Historical event log

Backup position

☒ USB disk 1 ☐ USB disk 2 ☐ e-Mail

* Use LW-9032~9039 to change the backup folder name.

3. Addresses

The addresses of key objects used in this demonstration are listed below, please adjust as necessary.

Object	Address	Object ID	Description
Window 10			
Event Log	LW-0		Control address
Event Display	LW-10	ED_0	Acknowledge address
Word Lamp	LW-100	WL_0	Shows current status
Numeric	LW-12496	NE_0	Last detected USB partition size
ASCII	LW-12492	AE_0	Last detected USB partition ID
ASCII	LW-12498	AE_1	Set the partition ID to be used as USB1
ASCII	LW-12502	AE_2	Set the partition ID to be used as USB2
Data Transfer (Per-page)		RP_0	Set the last detected USB to be used as USB1
Data Transfer (Per-page)		RP_1	Set the last detected USB to be used as USB2
Set Word	LW-12498	SW_0	Reset USB1 settings
Set Word	LW-12502	SW_1	Reset USB2 settings
Backup		BU_0	Back up file to USB1
Backup		BU_1	Back up file to USB2