



# PDS-5105D-MTCP Quick Start

v1.1, Aug. 2018

## What's in the box?

In addition to this guide, the package includes the following items:



PDS-5105D-MTCP x 1



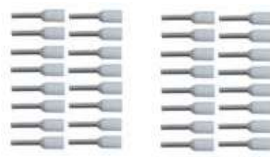
Quick Start x 1  
(This Document)



CA-0910 Cable x1



Screw Driver x1



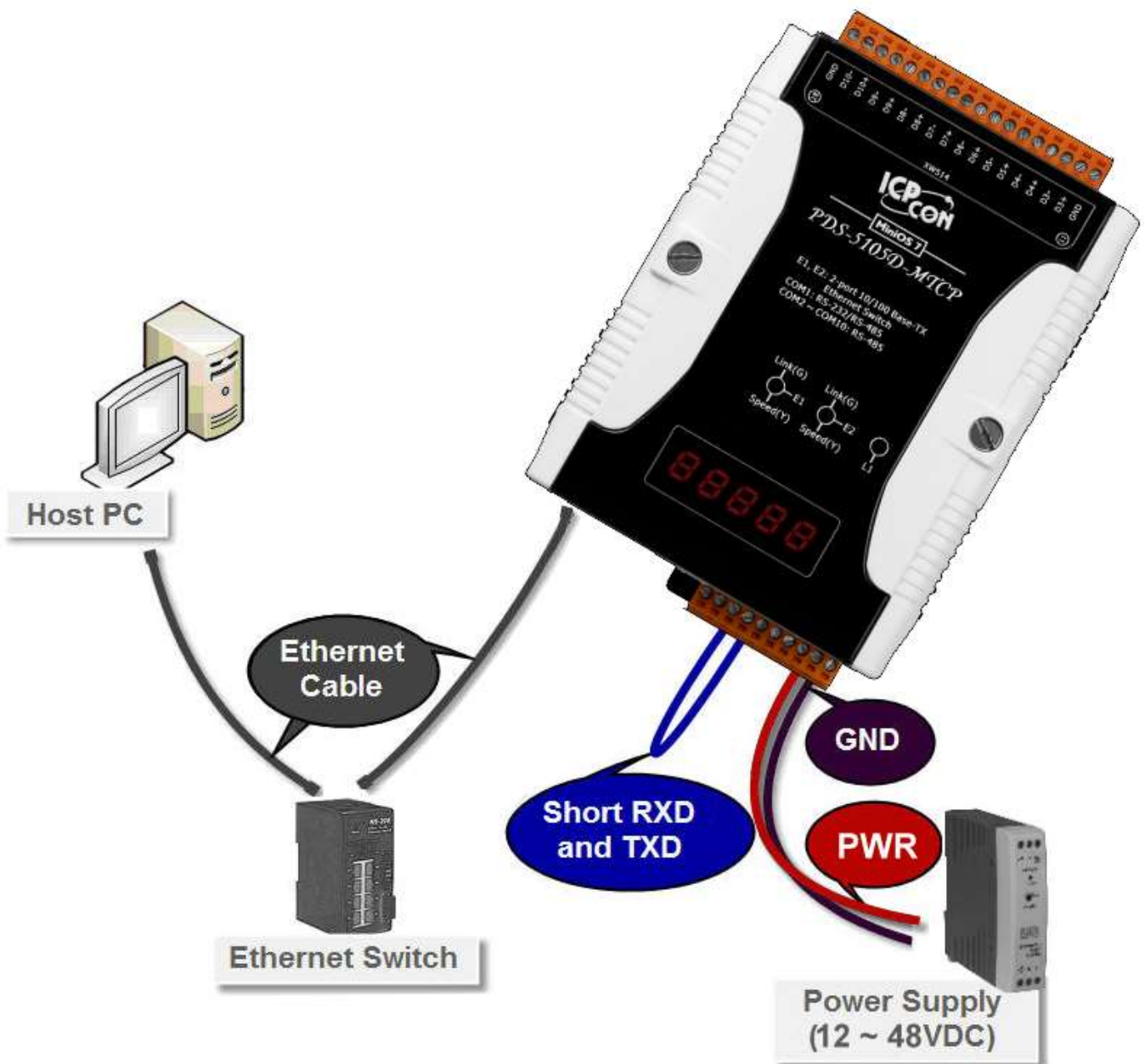
Pin Terminal x32

## Preparations for Devices

- An External Power supply device, such as the MDR-20-24 (Optional).  
[http://www.icpdas.com/products/Accessories/power\\_supply/power\\_list.htm](http://www.icpdas.com/products/Accessories/power_supply/power_list.htm)
- An Ethernet Hub, such as the NS-205 (Optional).  
[http://www.icpdas.com/products/Switch/industrial/industrial\\_list.htm](http://www.icpdas.com/products/Switch/industrial/industrial_list.htm)
- Make sure your PC has workable network settings.  
Disable or well configure your Windows firewall and Anti-Virus firewall first, else the “**Search Servers**” on **Chapter 3** may not work. (Please contact with your system Administrator)

# 1 Connecting the Power and Host PC

- 1) Connect both the PDS-5105D-MTCP and your PC to the same sub network or the same Ethernet switch.
- 2) **Short the RxD and TxD pins on the COM1 terminal block on the PDS-5105D-MTCP for self-test.**
- 3) Supply power (+12 Vdc ~ +48 Vdc) to the PDS-5105D-MTCP.



# 2 Install the VxComm Utility

The VxComm Utility can be obtained from the ICP DAS FTP site or the ICP DAS web site. The location of the download addresses are shown below:

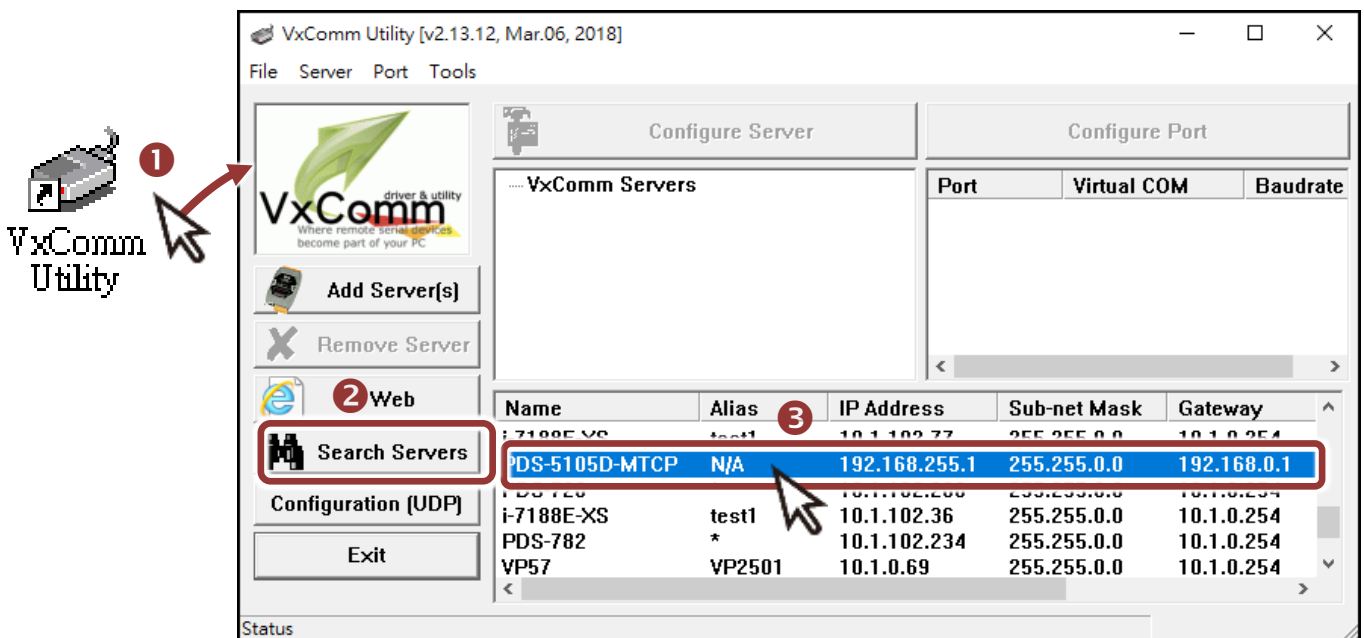


 [http://ftp.icpdas.com/pub/cd/8000cd/napdos/driver/vxcomm\\_driver/windows/](http://ftp.icpdas.com/pub/cd/8000cd/napdos/driver/vxcomm_driver/windows/)

 [ftp://ftp.icpdas.com/pub/cd/8000cd/napdos/driver/vxcomm\\_driver/windows/](ftp://ftp.icpdas.com/pub/cd/8000cd/napdos/driver/vxcomm_driver/windows/)

# 3 Configuring Network Settings

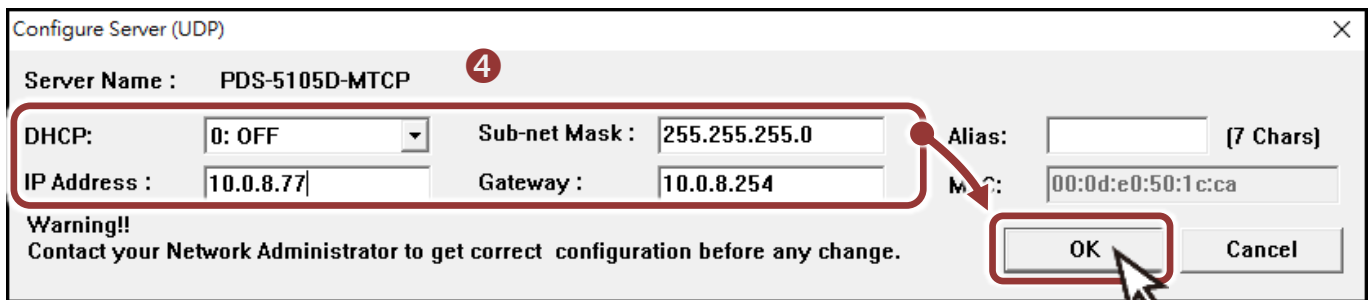
- 1) Double click the VxComm Utility shortcut on the desktop.
- 2) Click the “**Search Servers**” to search your PDS-5105D-MTCP.
- 3) Double click the **name of PDS-5105D-MTCP** to open the “Configure Server (UDP)” dialog box.



## Factory Default Settings of PDS-5105D-MTCP:

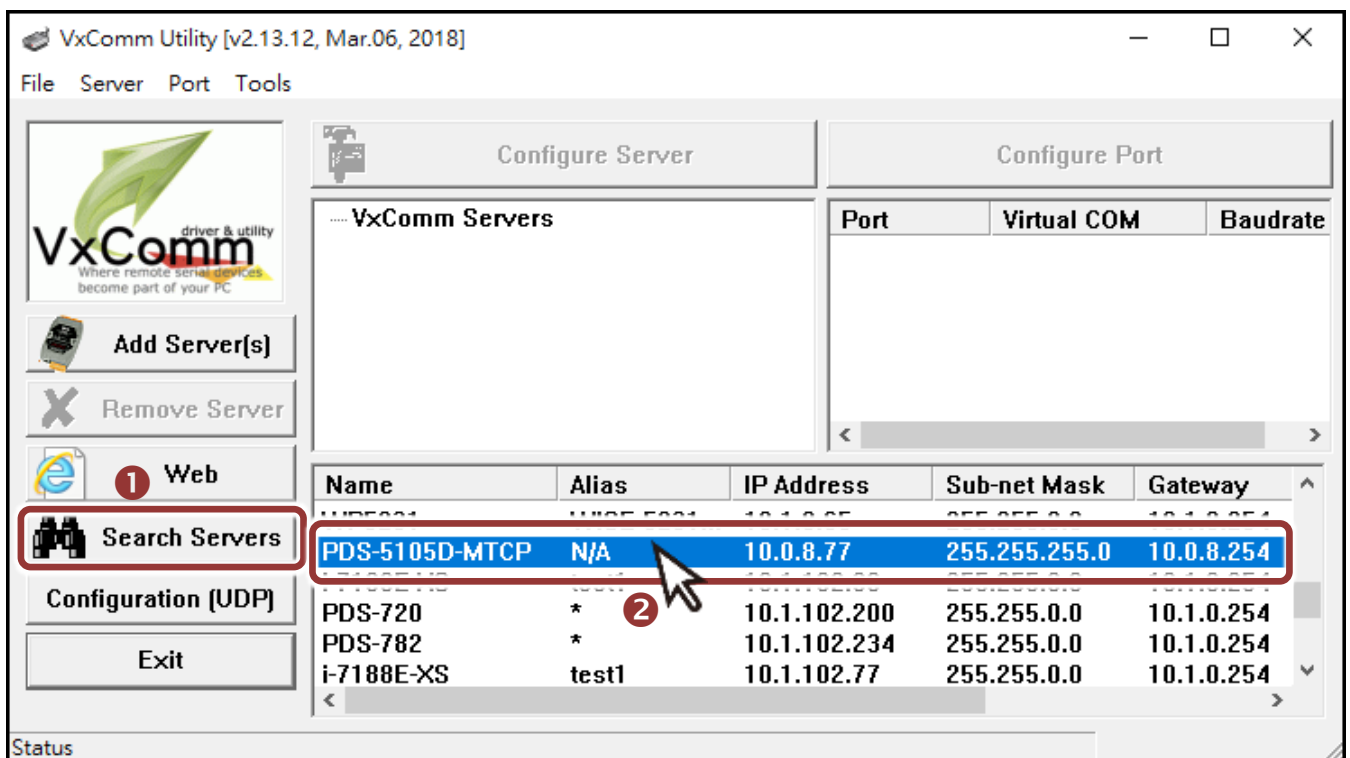
IP Address	192.168.255.1
Subnet Mask	255.255.0.0
Gateway	192.168.0.1

- 4) Contact your Network Administrator to obtain a **correct network configuration (such as IP/Mask/Gateway)**. Enter the network settings and click “OK”. **⚠ Note: The PDS-5105D-MTCP will use the new settings 2 seconds later.**



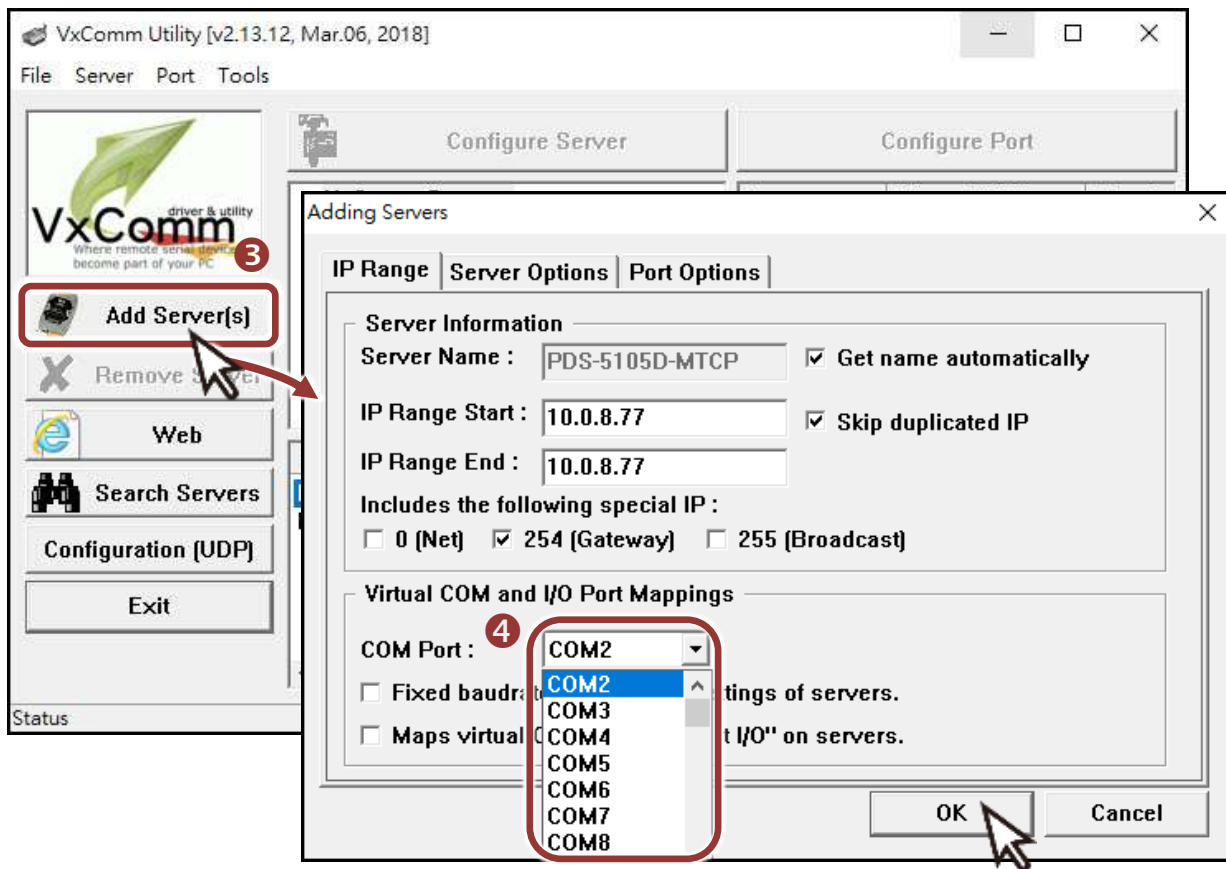
# 4 Configuring Virtual COM Ports

- 1) Wait 2 seconds and click “**Search Servers**” button again to ensure the PDS-5105D-MTCP is working well with new configuration.
- 2) Click the name of PDS-5105D-MTCP to select it.

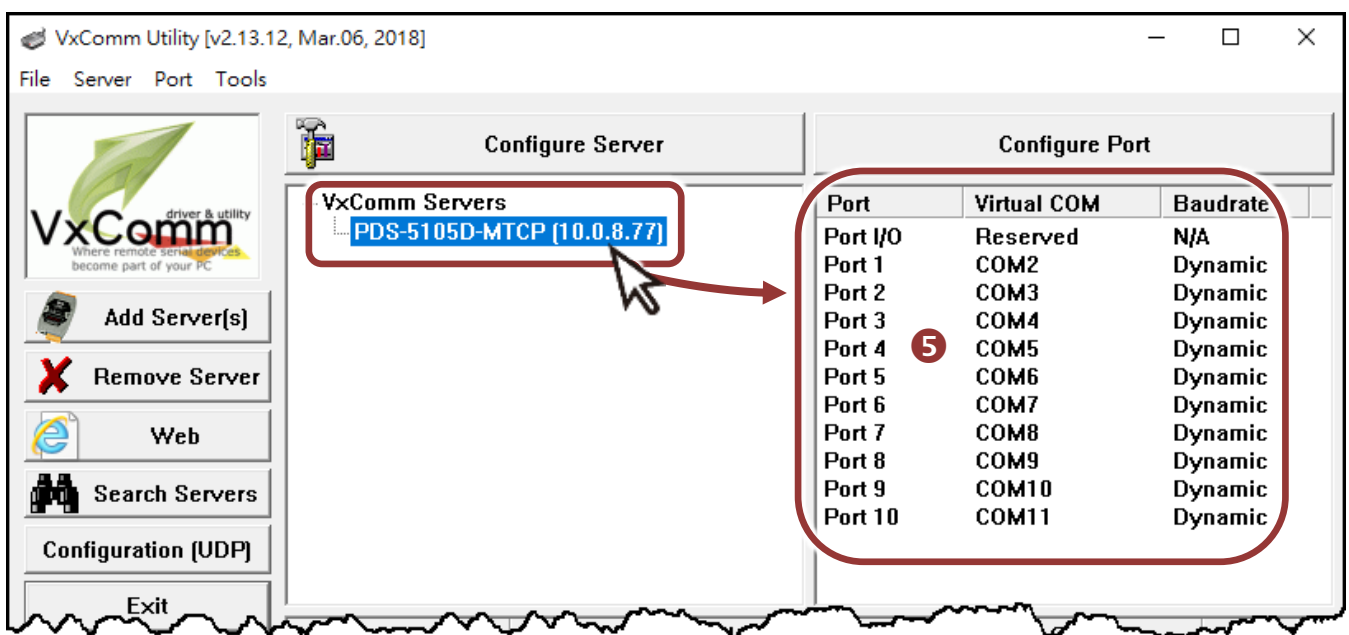


3) Click the “Add Server[S]” button.

4) Assign a COM Port number and click “OK” to save your settings.

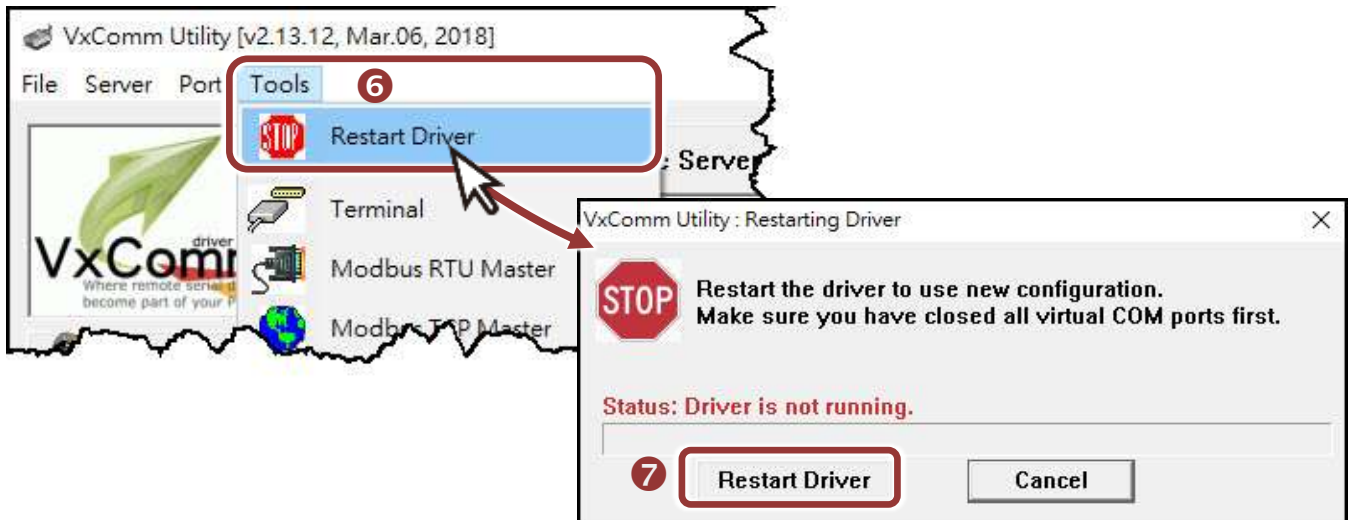


5) Click on PDS-5105D-MTCP name and check the virtual COM Port mappings on the PC.



6) Click the “Restart Driver” item in the “Tools” menu to display the “VxComm Utility: Restarting Driver” dialog box.

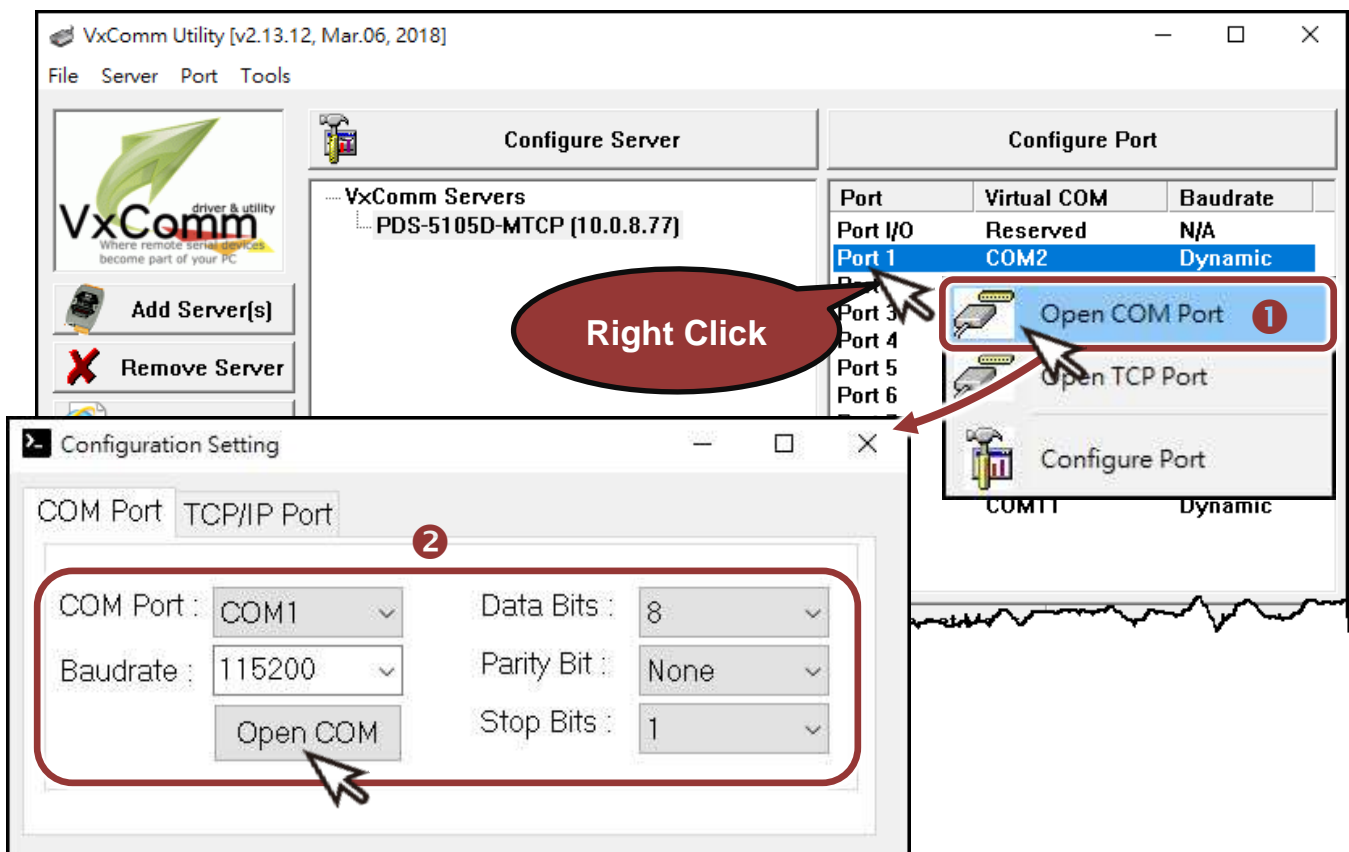
7) Click the “Restart Driver” button.



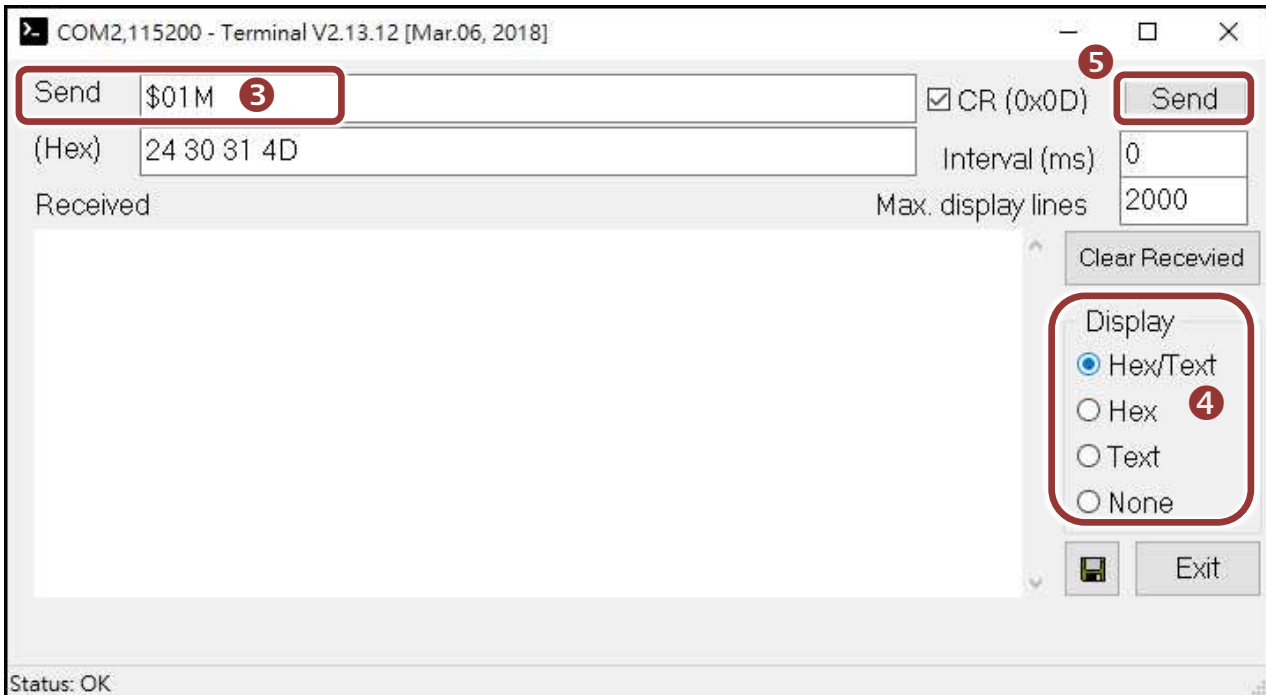
# 5 Self-Test

1) Right click Port1 and choose the “Open COM Port” item.

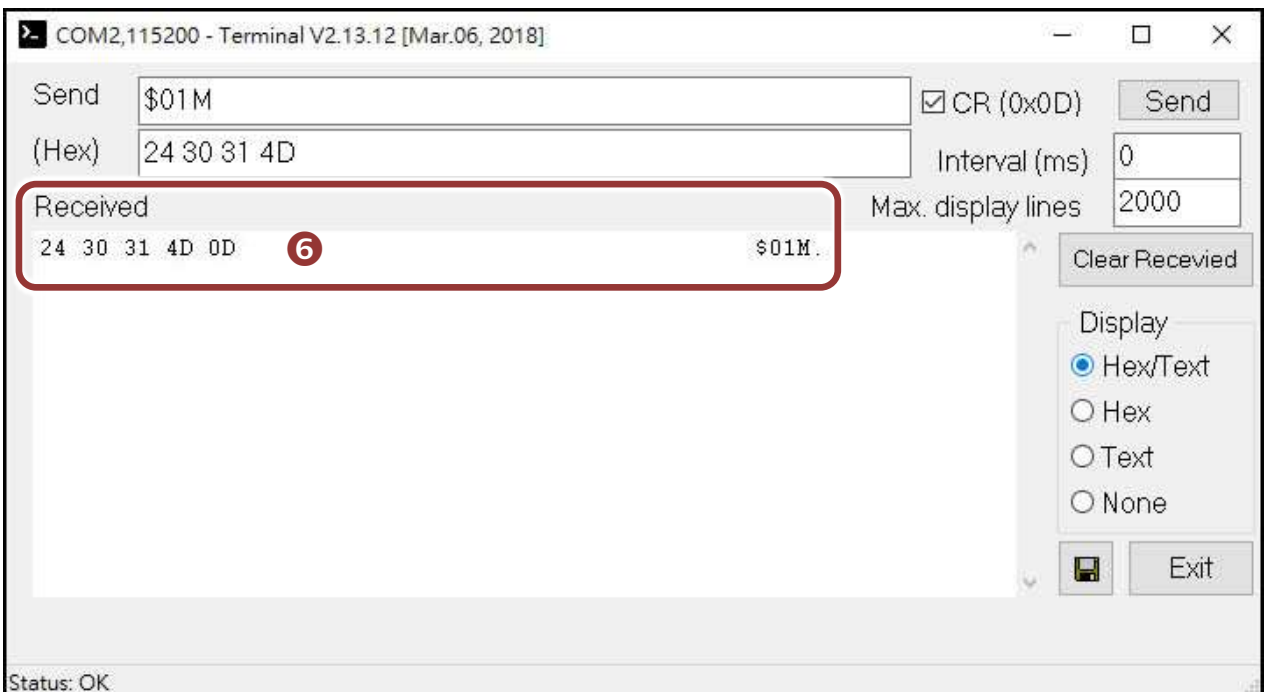
2) Check that the configuration of the COM Port is correct and then click the “Open COM” button.



- 3) Type a string (e.g., \$01M) in the “**Send**” field.
- 4) Click the “**Hex/Text**” option in the “**Display**” section.
- 5) Click the “**Send**” button to send the message.



- 6) If a response is received, it will be displayed in the received field.



If the test is successful, then your COM port program should now be able to work with this Virtual COM Port.

## Related Information

- PDS-5105D-MTCP Product Page:

[http://www.icpdas.com/root/product/solutions/industrial\\_communication/pds/pds-5105d-mtcp.html](http://www.icpdas.com/root/product/solutions/industrial_communication/pds/pds-5105d-mtcp.html)

- Documentation:

<http://ftp.icpdas.com/pub/cd/8000cd/napdos/pds/pds-5105d/document/>

- Firmware:

<http://ftp.icpdas.com/pub/cd/8000cd/napdos/pds/pds-5105d/firmware/>

- MDR-20-24, NS-205 Product Page (optional):

[http://www.icpdas.com/root/product/solutions/industrial\\_ethernet\\_switch/ns-205.html](http://www.icpdas.com/root/product/solutions/industrial_ethernet_switch/ns-205.html)

[http://www.icpdas.com/root/product/solutions/accessories/power\\_supply/mdr-20-24.html](http://www.icpdas.com/root/product/solutions/accessories/power_supply/mdr-20-24.html)

## NOTE

The flash protection function is disabled for factory default settings.

User can modify the program or update the firmware. If you want to enable flash protection function, refer to **Section 2.10 Flash Protection Function** of PDS-700 user manual.

The location of the download addresses are shown below:

<http://ftp.icpdas.com/pub/cd/8000cd/napdos/pds/pds-5000/document/>