



I/O CARD QUICK START GUIDE

for

A-8111

Language
Version
Update

English
V1.0
Oct.2008

1

What's on your package?

- One A-8111 series card
- One companion ISA CD (V2.1 or later)
- One Quick Start Guide(This document)

2

Installing Windows Driver

Follow those steps:

1. Setup the Windows driver.




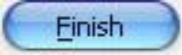
You can get the driver from:

CD:\NAPDOS\ISAA8111\DLL_OCX\Driver\

http://ftp.icpdas.com/pub/cd/iocard/isa/napdos/isa/a8111/dll_ocx/driver/



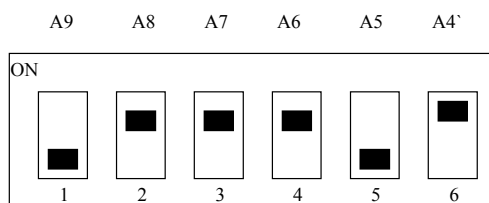
Windows driver only support windows 98/NT/2000 and XP/2003 versions.

2. Click  button to start installation.
3. Click  button to install driver into the default folder.
4. Click  button to continue installation.
5. Select **“NO, I will restart my computer later”** and then click  button.

3

I/O Base Address Setting

- The base address is set from SW1 DIP switch on board:



SW1 : BASE ADDRESS

BASE ADDR	A9	A8	A7	A6	A5	A4
200-20F	OFF	ON	ON	ON	ON	ON
210-21F	OFF	ON	ON	ON	ON	OFF
220-22F(☑)	OFF	ON	ON	ON	OFF	ON
230-23F	OFF	ON	ON	ON	OFF	OFF
:	:	:	:	:	:	:
300-30F	OFF	OFF	ON	ON	ON	ON
:	:	:	:	:	:	:
3F0-3FF	OFF	OFF	OFF	OFF	OFF	OFF

(☑) : Default base address is 0x220

4

Installing Hardware on PC

Follow those steps:

1. Shut down and power off your computer
2. Remove all covers from the computer
3. Select an empty ISA slot
4. Carefully insert your I/O card into the ISA slot
5. Replace the PC covers
6. Power on the computer

After powering-on the computer, continue next process.

5

Adding Hardware



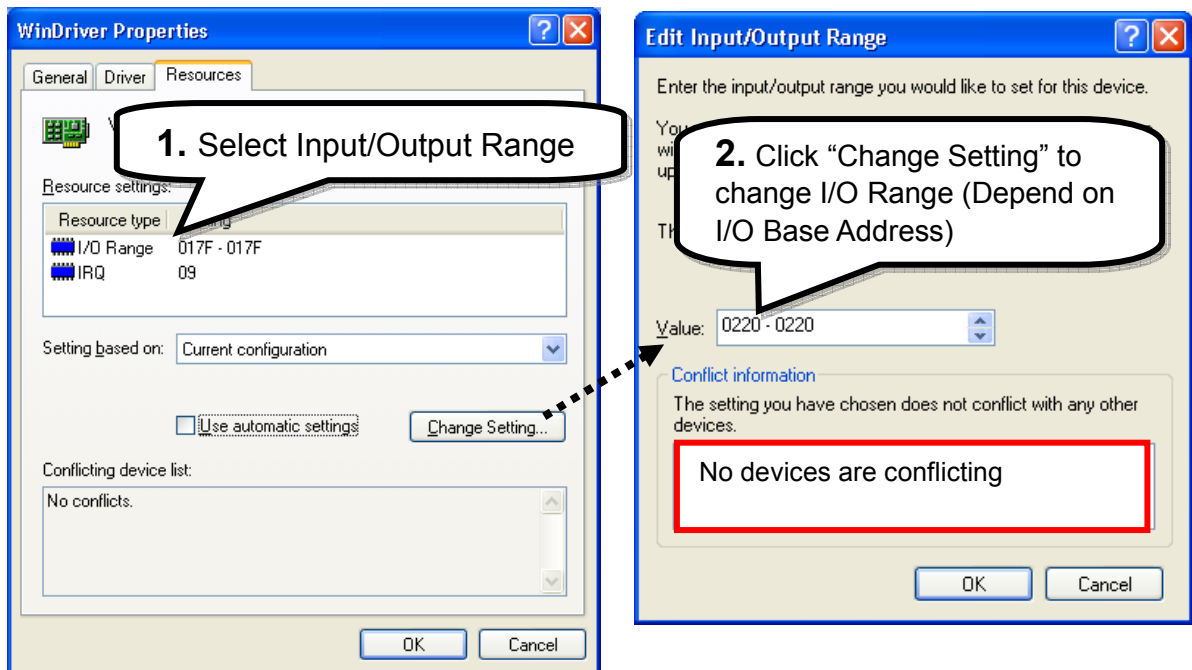
Adding hardware is used on Windows 2000/XP/2003 only.
Windows 9X/Me/NT users can skip it.

7. Add Hardware

- 7-1 Open the **“Control Panel”** by click the item **“Start / Settings / Control Panel”**.
- 7-2 Double-click the item **“Add/Remove Hardware”** and Click the **“Next >”** button.
- 7-3 Select the item **“Add/Troubleshoot a device”** and click the **“Next >”** button.

- 7-4 Select the item **“Add a new device”** and click the **“Next >”** button.
- 7-5 Select the item **“No, I want to select the hardware from a list”** and click the **“Next >”** button.
- 7-6 Select the item **“Other device”** and click the **“Next >”** button.
- 7-7 Click the **“Have Disk...”** button.
- 7-8 Click the **“Browse...”** button to select the **Inf** file default path is C:\DAQPro\A-8111_Win2K\driver and click the **“OK”** button.
- 7-9 Select the correct device from the **“Models:”** listbox and Click the **“Next >”** button.
- 7-10 The windows show to dialog box and Click the **“OK”** button to enter the device’s properties settings.

8. Modify the device properties



9. Reboot the PC

The detail “add hardware” information. Please refer to

CD:\NAPDOSISA\Manual\PCI_ISA_PnP_Driver_Installation_in_Win9x_2K_XP.pdf

6

Pin Assignments

➤ CN1: Analog input/Analog output connector.

Pin	Description	Pin	Description
1	A/D Analog Input Channel 0	20	Analog GND
2	A/D Analog Input Channel 1	21	Analog GND
3	A/D Analog Input Channel 2	22	Analog GND
4	A/D Analog Input Channel 3	23	Analog GND
5	A/D Analog Input Channel 4	24	Analog GND
6	A/D Analog Input Channel 5	25	Analog GND
7	A/D Analog Input Channel 6	26	Analog GND
8	A/D Analog Input Channel 7	27	Analog GND
9	Not Used	28	Not Used
10	Not Used	29	Not Used
11	Not Used	30	D/A Analog Voltage output
12	Not Used	31	Not Used
13	Not Used	32	Not Used
14	Analog GND	33	Not Used
15	Analog GND	34	Not Used
16	Not Used	35	Not Used
17	Not Used	36	Not Used
18	Not Used	37	Not Used
19	PCB's + 5V output		

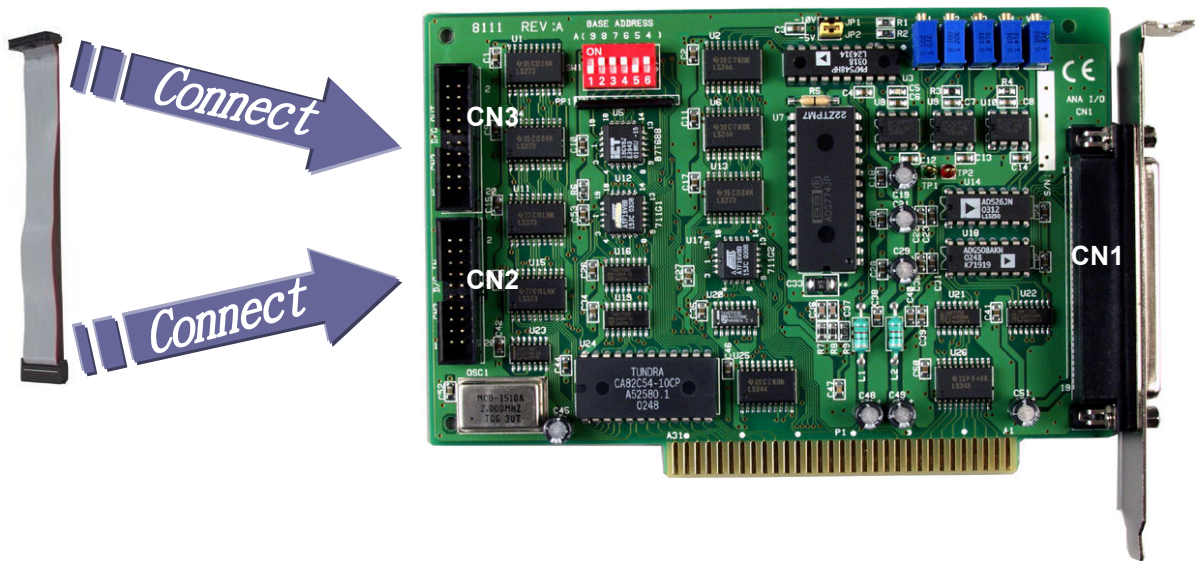
➤ CN2, CN3: Digital input/output connector.

Pin	Description	Pin	Description	Pin	Description	Pin	Description
1	Digital Input 0/TTL	2	Digital Input 1/TTL	1	Digital output 0/TTL	2	Digital output 1/TTL
3	Digital Input 2/TTL	4	Digital Input 3/TTL	3	Digital output 2/TTL	4	Digital output 3/TTL
5	Digital Input 4/TTL	6	Digital Input 5/TTL	5	Digital output 4/TTL	6	Digital output 5/TTL
7	Digital Input 6/TTL	8	Digital Input 7/TTL	7	Digital output 6/TTL	8	Digital output 7/TTL
9	Digital Input 8/TTL	10	Digital Input 9/TTL	9	Digital output 8/TTL	10	Digital output 9/TTL
11	Digital Input 10/TTL	12	Digital Input 11/TTL	11	Digital output 10/TTL	12	Digital output 11/TTL
13	Digital Input 12/TTL	14	Digital Input 13/TTL	13	Digital output 12/TTL	14	Digital output 13/TTL
15	Digital Input 14/TTL	16	Digital Input 15/TTL	15	Digital output 14/TTL	16	Digital output 15/TTL
17	PCB's GND output	18	PCB's GND output	17	PCB's GND output	18	PCB's GND output
19	PCB's + 5V output	20	STROBE	19	PCB's + 5V output	20	PCB's +12V output

7

Self-Test

1. Use CA-2002(Optional) to connect the CN2 with CN3.



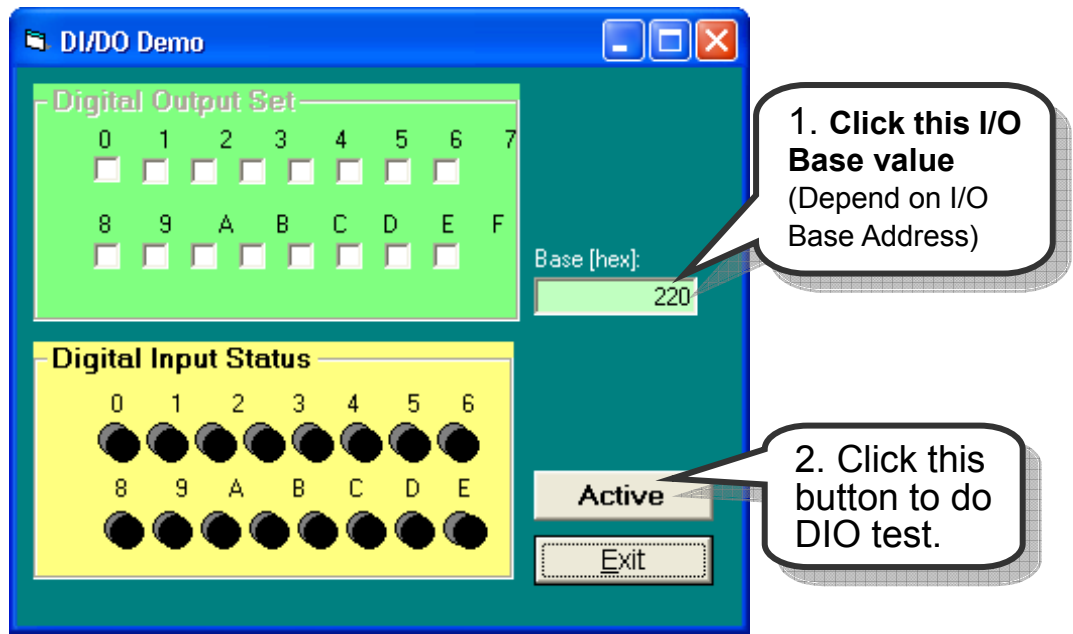
2. Run the A-8111 sample program.

Get the file from:

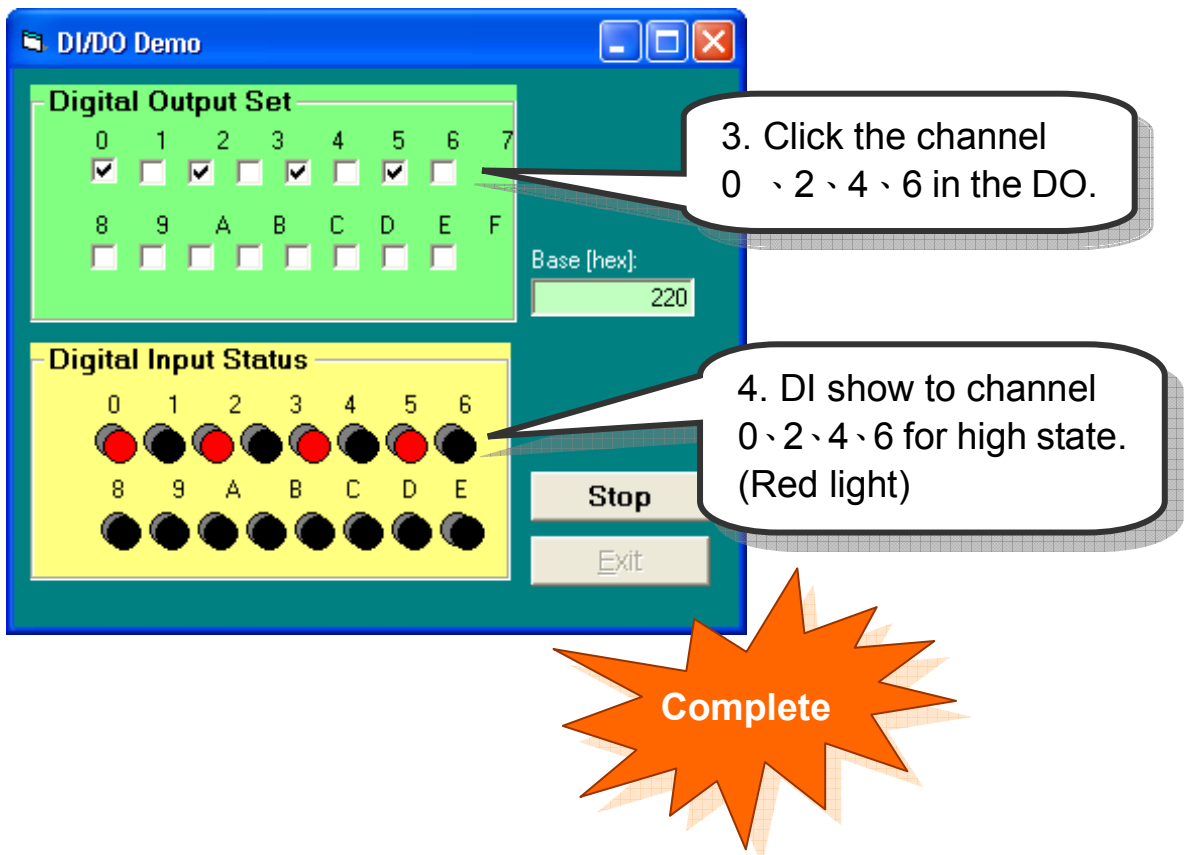
C:\NAPDOS\ISA\A8111\DLL_OCX\DEMO\

[http://ftp.icpdas.com/pub/cd/iocard/isa/napdos/isa/a8111/dll_ocx/d
emo/](http://ftp.icpdas.com/pub/cd/iocard/isa/napdos/isa/a8111/dll_ocx/demo/)

3. Check number of the A-8111 and test DIO function.



4. Get DIO function test result.



8

Additional Information

✓ **A-8111 Series Card Product page:**

http://www.icpdas.com/products/DAQ/pc_based/a-8111.htm

✓ **CA-2002(Optional) page:**

http://www.icpdas.com/products/Accessories/cable/cable_selection.htm

✓ **Documents:**

CD:\NAPDOS\ISAA8111\manual

<http://ftp.icpdas.com/pub/cd/iocard/isa/napdos/isa/a8111/manual/>

✓ **Software:**

CD:\NAPDOS\ISAA8111

<http://www.icpdas.com/download/isa/a8111/index.htm>

The ICP DAS Web Site

<http://www.icpdas.com>



Contact Us

Service@icpdas.com

- Technical support
- Supplies and ordering information
- Ways to enhance your device
- FAQ
- Application story

Copyright ©2008 by ICP DAS Co., Ltd. All right are reserved