

Packing List

In addition to this guide, the package includes the following items:



iNS-316

Technical Support

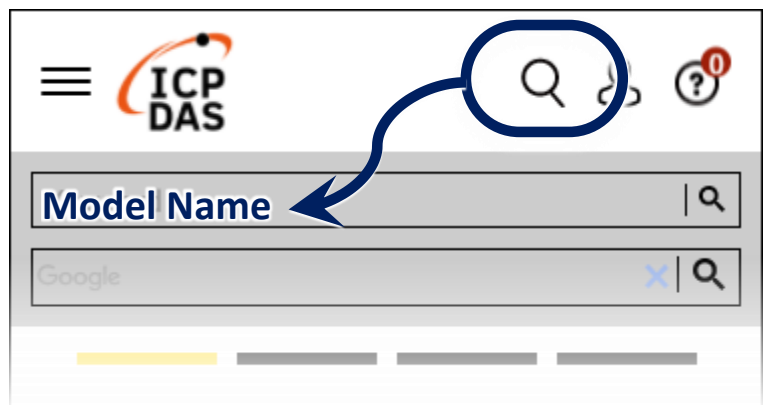
service@icpdas.com

www.icpdas.com

Resources

How to search for drivers, manuals and spec information on ICP DAS website.

- For Mobile Web



- For Desktop Web



1 Connecting the Power and Host PC

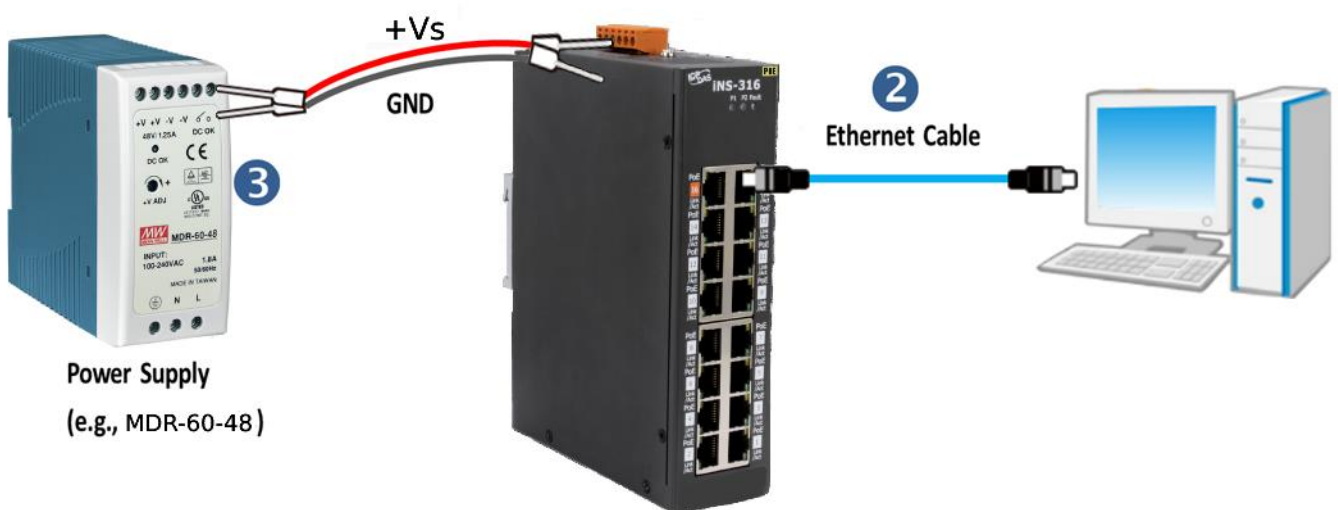
1) Make sure your PC has workable network settings.

Disable or well configure your Windows firewall and Anti-Virus firewall first, else the **Search Server** in section 3 may not work.

(Please contact with your system Administrator)

2) Connect the iNS-316 to your PC or to the same sub network of PC.

3) Supply power (+48 ~ +57 VDC) to the iNS-316.



2 Installing Software on Your PC

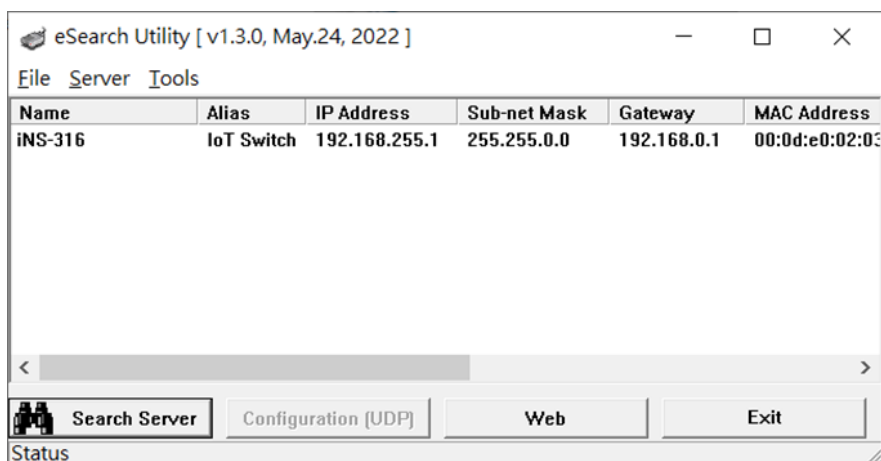
Install eSearch Utility, which can be obtained from the web site:



https://www.icpdas.com/en/product/guide+Software+Utility_Driver+eSearch_Utility

3 Configuring Network Settings

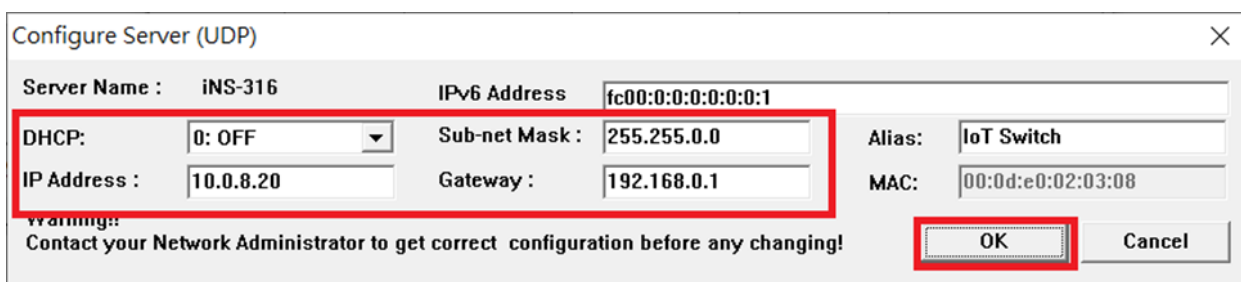
- 1) Double-click the eSearch Utility shortcut on the desktop.
- 2) Click **Search Server** to search your iNS-316.
- 3) Double-click the name of iNS-316 to open the **Configure Server (UDP)** dialog box.



Factory default network settings

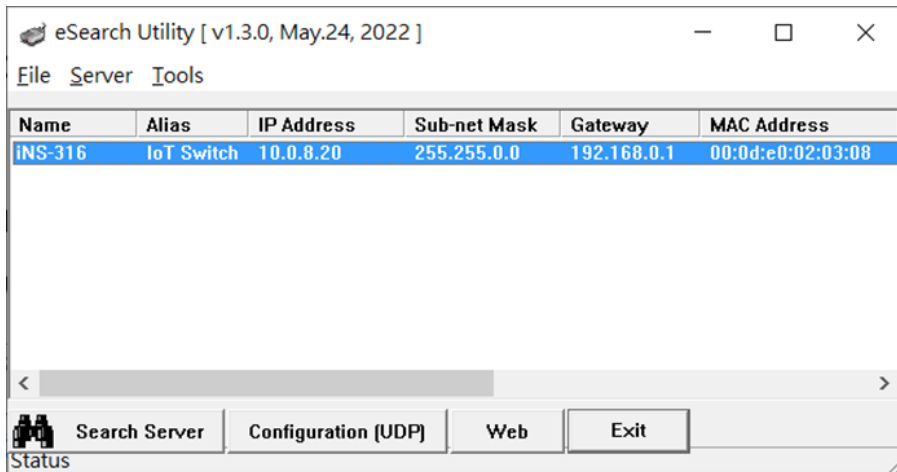
IP 192.168.255.1
Gateway 192.168.0.1
Mask 255.255.0.0

- 4) Contact your network administrator to obtain a correct network configuration (such as IP/Mask/Gateway). Enter the new network settings and click **OK**.



⚠ Note: The iNS-316 will use the new settings 2 seconds later.

- 5) Wait 2 seconds and click **Search Server** again to ensure the iNS-316 is working well with new configuration.
- 6) Click the name of iNS-316 to select it.
- 7) Click the **Web** button to open the iNS-316 web interface.



- 8) Enter default password (**Admin**) in the **Current password** and setting your password.

Change Password

The length of the password is 12 characters maximum.

Current password:

New password:

Confirm new password:

⚠ Note: must modify default password in first used(default Admin)

- 9) Enter password in the **Login password** input field and click **Submit** to log in to the iNS-316.

The system is logged out.
To enter the web configuration, please type password in the following field.

Login password:

Google Chrome: Menu / Settings / Show advanced settings / Privacy / Content settings / Javascript / Allow all sites to run JavaScript (recommended).

Microsoft IE: Menu / Tools / Internet Options / Security / Internet / Custom level... / Scripting / Enable.

Firefox: about:config / I'll be careful, I promise! / Preference Name / javascript.enabled / True.

When using IE, please disable its cache as follows.

Menu items: Tools / Internet Options... / General / Temporary Internet Files / Settings... / Every visit to the page