



Quick Start Guide for ET-87Pn Series

October 2010, Version 1.0.1

Congratulations!

Congratulations on purchasing ET-87Pn - the most popular automation solution for remote monitoring and control application. This Quick Start Guide will provide information needed to get started with ET-87Pn. Please also consult the User Manual for detailed information on the setup and use of ET-87Pn.

What's In the Box?

In addition to this guide, the package includes the following items:



**ET-87Pn Module
(ET-87P2/4/8)**



Software Utility CD



**Screw Driver
(1C016)**

Technical Support

- **ET-87Pn User Manual**

CD:\NAPDOS\NAPDOS\u87pn_io_unit\ET-87Pn\Document\

http://ftp.icpdas.com/pub/cd/8000cd/napdos/87pn_io_unit/et-87pn/document/

- **ET-87Pn Website**

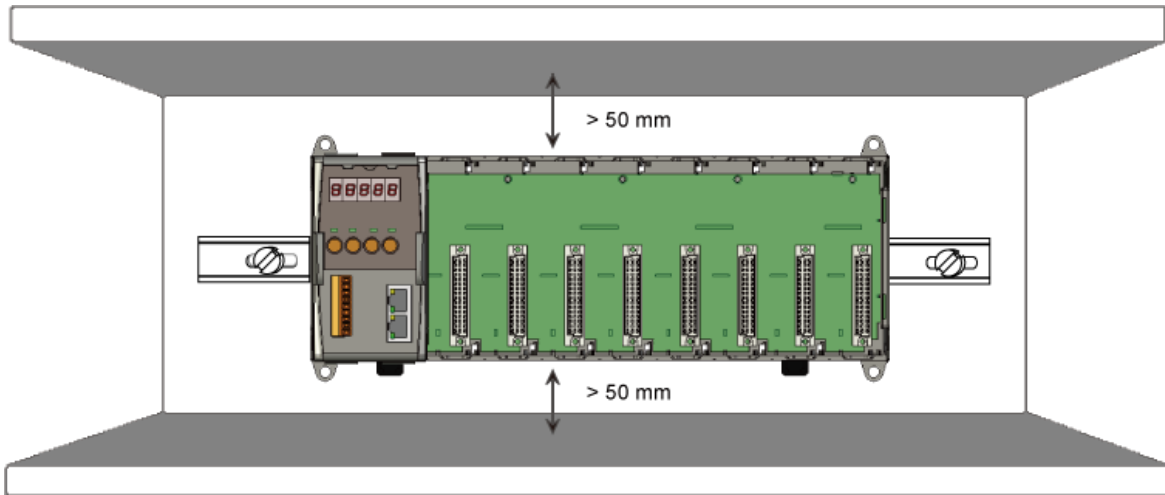
http://www.icpdas.com/products/io_expansion_unit/et-87pn.htm

- **ICP DAS Website**

<http://www.icpdas.com/>

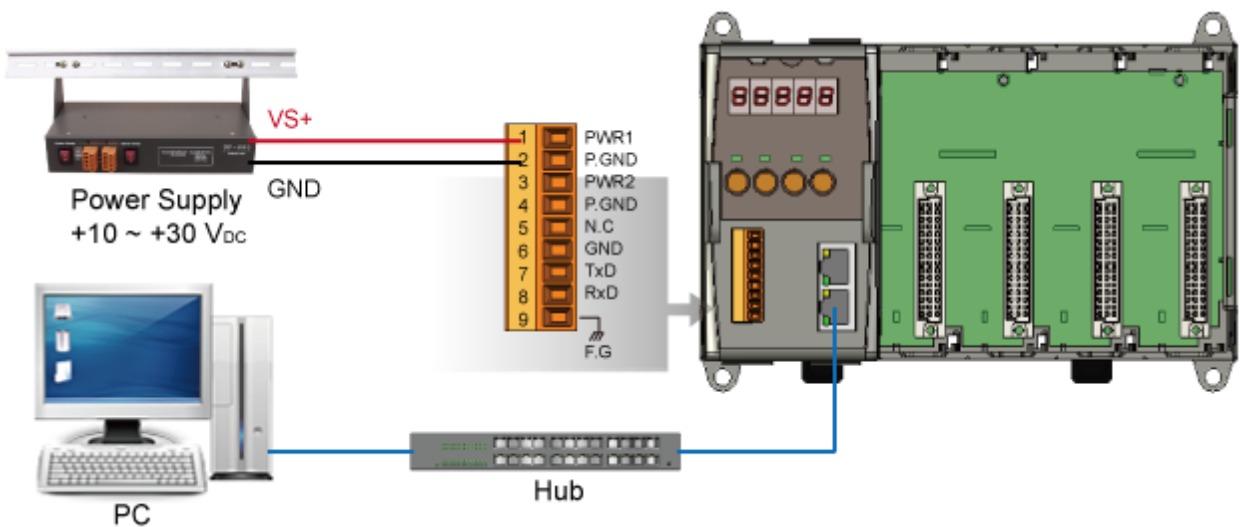
1 Mounting the Hardware

The ET-87Pn installation must provide proper ventilation, spacing, and grounding to ensure the equipment will operate as specified. A minimum clearance of 50mm between the ET-87Pn and the top and bottom side of the enclosure panels must be provided.



2 Connecting to PC, Network and Power

The ET-87Pn is equipped with RJ-45 Ethernet ports for connection to an Ethernet hub/switch and PC. You can also link directly the ET-87Pn to PC with an Ethernet cable.



3 Installing the Tools and Utilities

Step 1: Install the MiniOS7 Utility tool



The MiniOS7 Utility can be obtained from companion CD or our FTP site:
CD:\Napdos\minios7\utility\minios7_utility\
ftp://ftp.icpdas.com/pub/cd/8000cd/napdos/minios7/utility/minios7_utility/

Step 2: Install the VxComm Utility tool



The VxComm Utility can be obtained from companion CD or our FTP site:
CD:\NAPDOS\Driver\VxComm_Driver\
ftp://ftp.icpdas.com/pub/cd/8000cd/napdos/driver/vxcomm_driver/

Step 3: Install the DCON Utility tool



The DCON Utility can be obtained from companion CD or our FTP site:
CD:\NAPDOS\Driver\DCON_Utility\
ftp://ftp.icpdas.com/pub/cd/8000cd/napdos/driver/dcon_utility/

4 Using MiniOS7 Utility to Assign a New IP

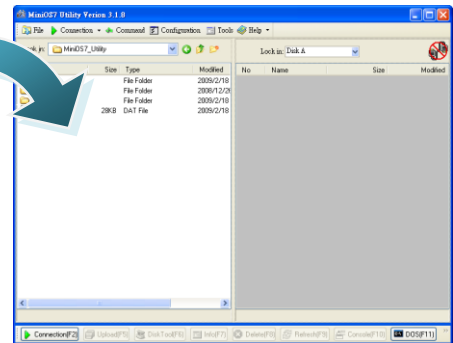
The ET-87Pn are Ethernet devices, which comes with a default IP address, therefore, you must first assign a new IP address to the ET-87Pn.

The factory default IP settings are as follows:

| Item | Default |
|-------------|---------------|
| IP Address | 192.168.255.1 |
| Subnet Mask | 255.255.0.0 |
| Gateway | 192.168.0.1 |

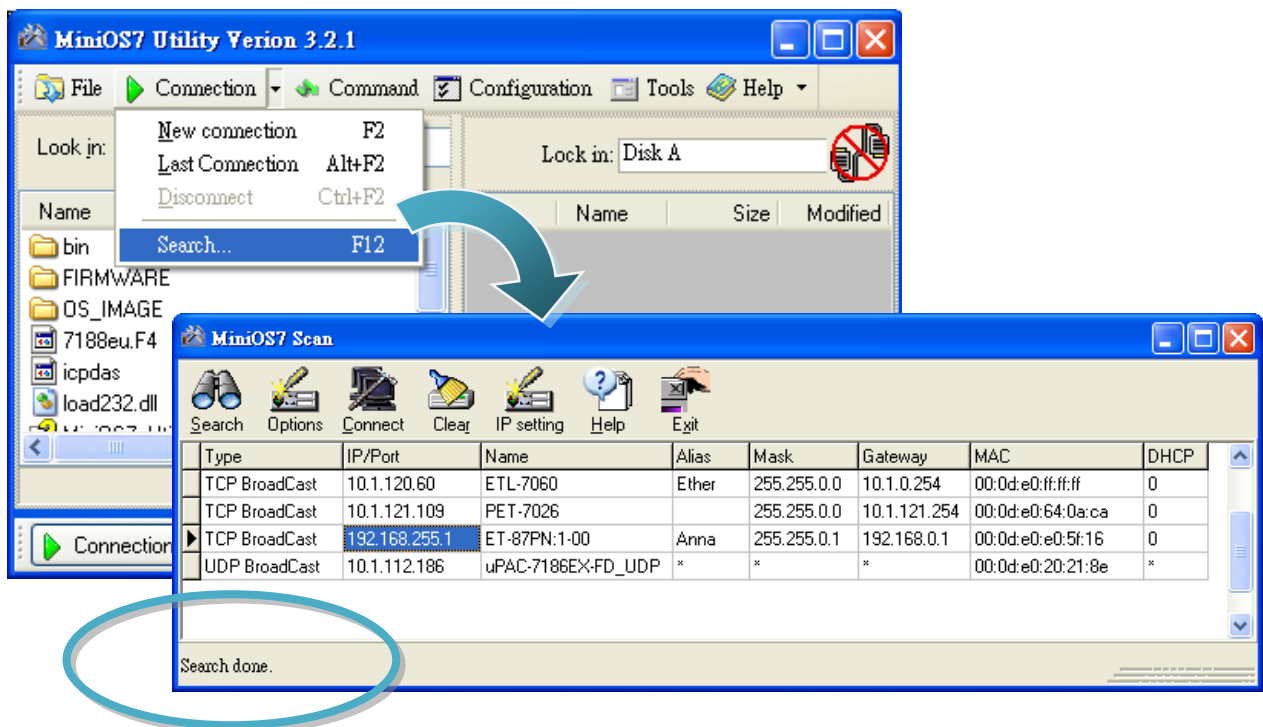
Step 1: Run the MiniOS7 Utility

Double-click the MiniOS7 Utility shortcut on your desktop.



Step 2: Press "F12" or choose "Search" from the "Connection" menu

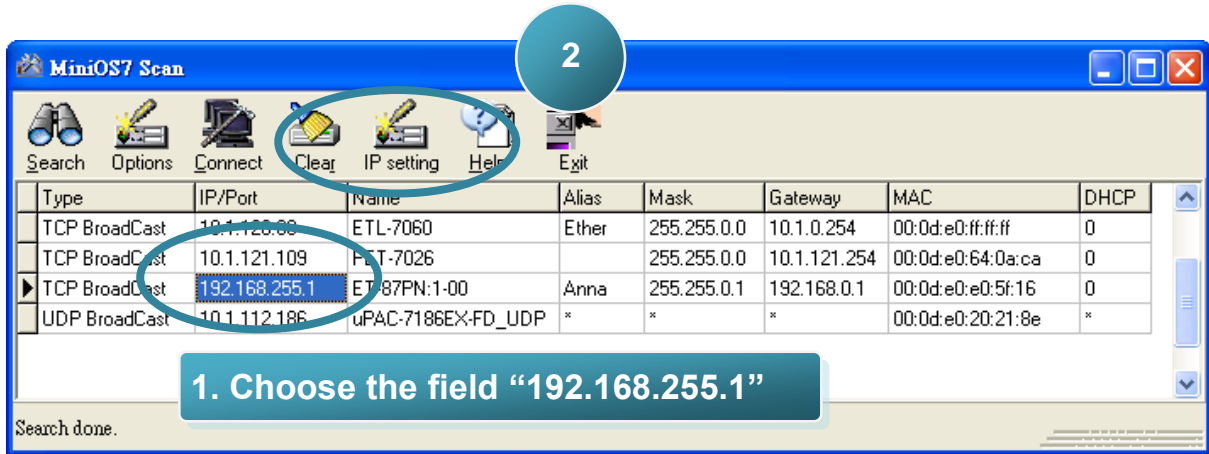
After pressing F12 or choosing Search from Connection menu, the MiniOS7 Scan dialog will appear, that will display a list of all the MiniOS7 modules on your network.



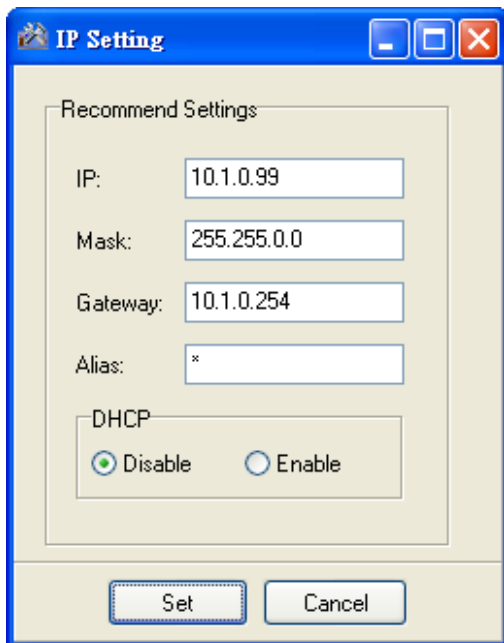
See the status tip, waiting for the search to be done.

Step 3: Choose the module name and then choose “IP setting” from the toolbar

Choose the module name for fields in the list, and then choose IP setting from the toolbar.

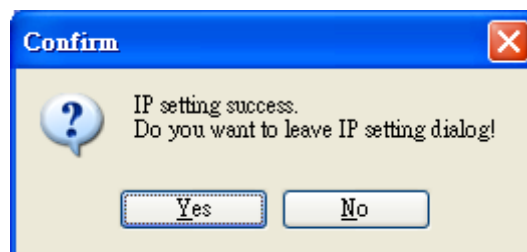


Step 4: Assign a new IP address and then choose “Set” button



Step 5: Choose “Yes” button

After completing the settings, press the Yes button in the Confirm dialog box to exit the procedure.

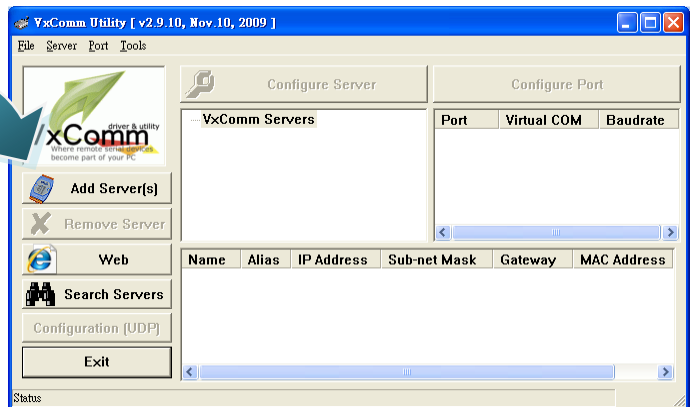


5 Using VxComm Utility to Create Virtual COM Ports

You can join Ethernet ports into one virtual COM port in order to let one application receive data from your ET-87Pn.

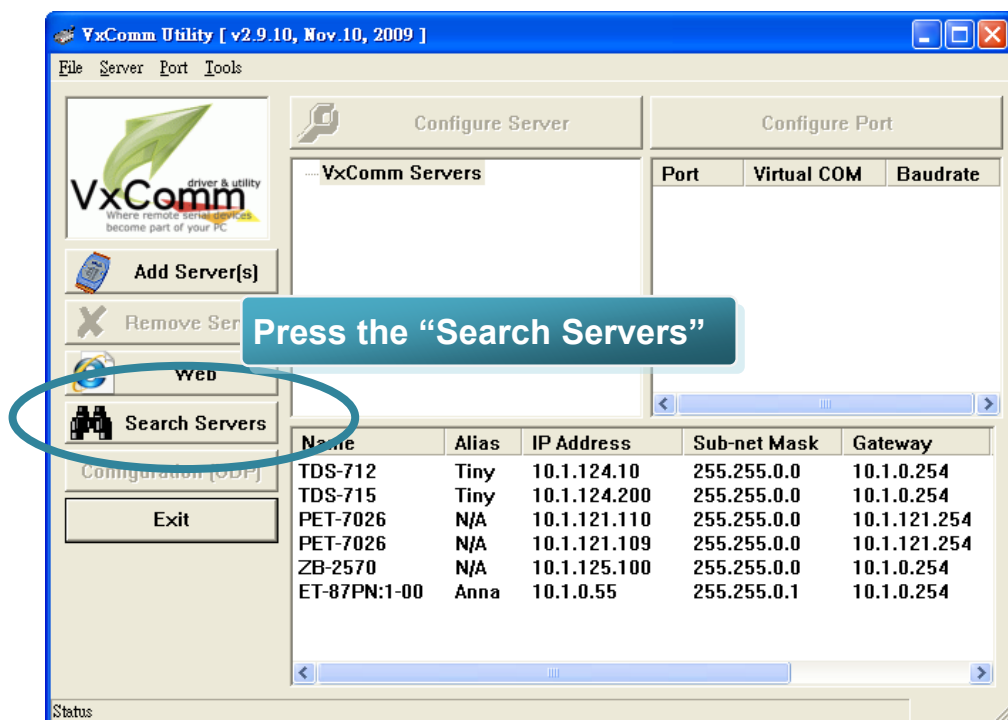
Step 1: Run the VxComm Utility

Double-click the VxComm Utility shortcut on your desktop.



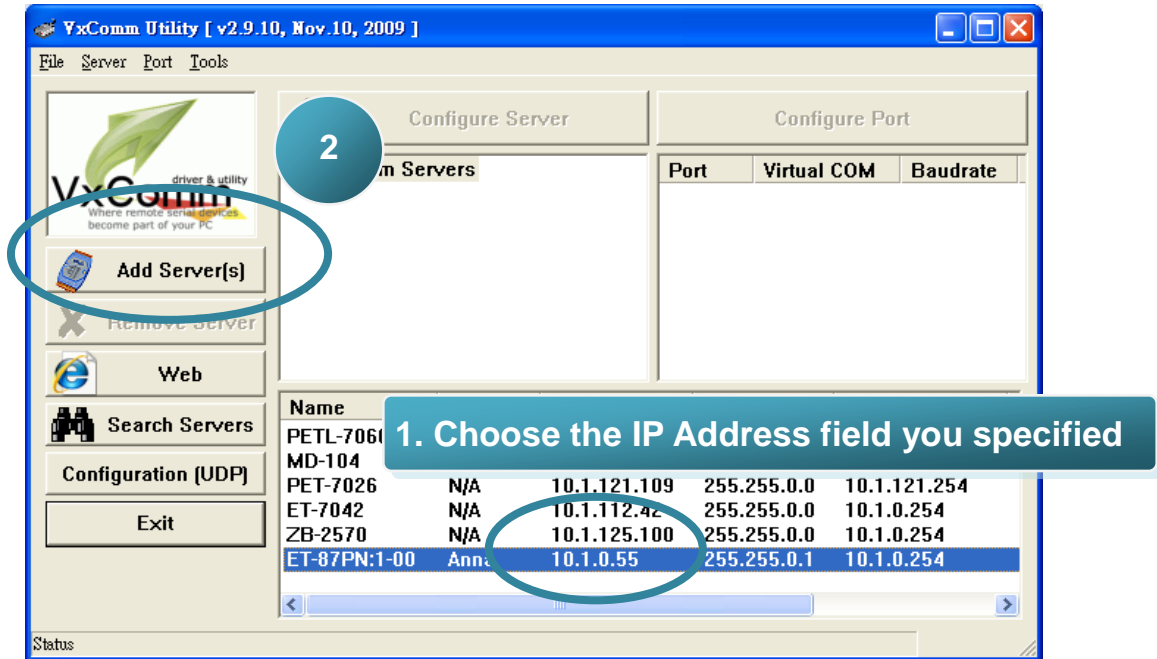
Step 2: Press “Search Servers” toolbar

After pressing Search Servers from the toolbar, that will search all of your network modules.

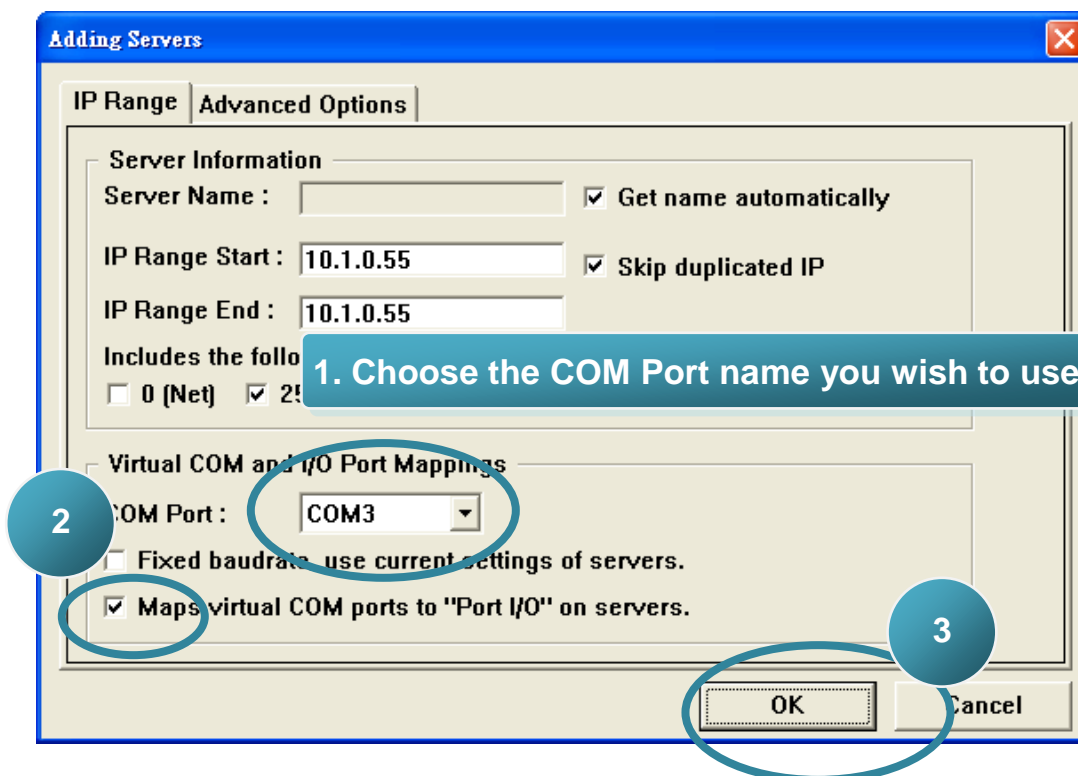


Step 3: Choose the IP Address field you specified easier and press “Add Server(s)” button from the toolbar

Choose the IP Address field you specified in the list, and then press Add Server(s) from the toolbar.



Step 4: Choose the Valid COM Port number you wish to use

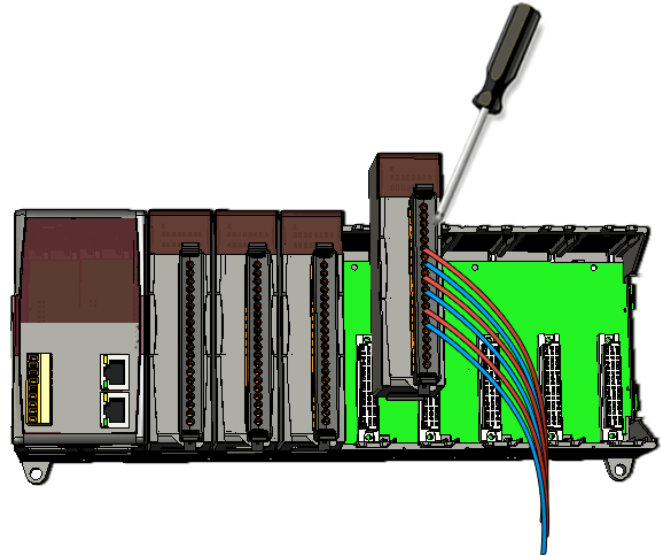


6 Inserting and Wiring I/O modules

There are various types of I/O expansion modules for interfacing many different field devices to the ET-87Pn system.

For more information about I/O expansion module, please refer to http://www.icpdas.com/products/PA/C/i-8000/8000_IO_modules.htm

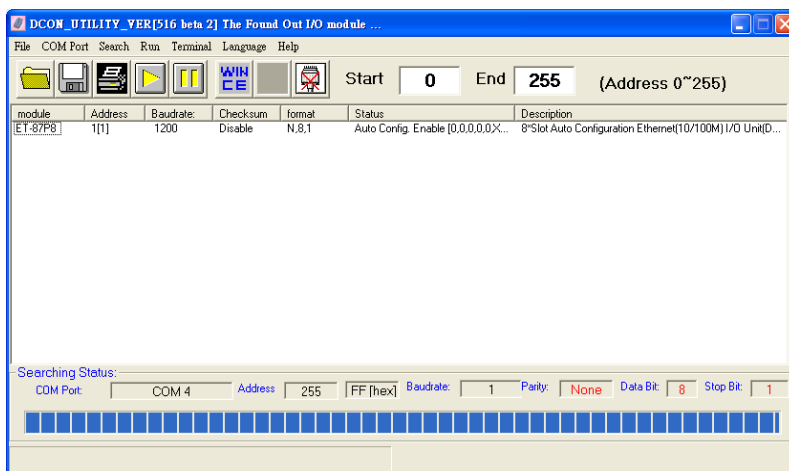
These modules have their own manuals, so if you are using them you should supplement this manual with the manual specifically designed for the special module.



7 Using DCON Utility to Configure I/O Modules

DCON Utility is an easy-to-use utility to help you configure the I/O modules.

For more detailed information on how to use DCON Utility to configure I/O modules, please refer to ET-87Pn User Manual



For more details, please refer to DCON Utility web site: <http://www.icpdas.com/products/dcon/introduction.htm>