

# NS-105PSE

## 5-port 10/100 Mbps PoE (PSE) Ethernet Switch



### ◆ Introduction

The NS-105PSE/NS-205PSE is a 5-port unmanaged PoE (Power over Ethernet) Industrial Ethernet switch; it supports 4 PoE ports which are classified as power source equipment (PSE).

The NS-105PSE/NS-205PSE makes centralized power supply come true and provides up to 15.4 watts of power per PSE port.

### ◆ Features

- Automatic MDI/MDI-X crossover for plug-and-play
- Store-and-forward architecture
- Slim packaging fits on your DIN-Rail Mounting
- Each port supports both 10/100 Mbps speed auto negotiation
- Full duplex IEEE 802.3x and half duplex backpressure flow control
- Power Inputs +46 VDC~ +55 VDC
- Supports operating temperatures from -40 °C ~ +75 °C
- 3.2 Gbps high performance memory bandwidth

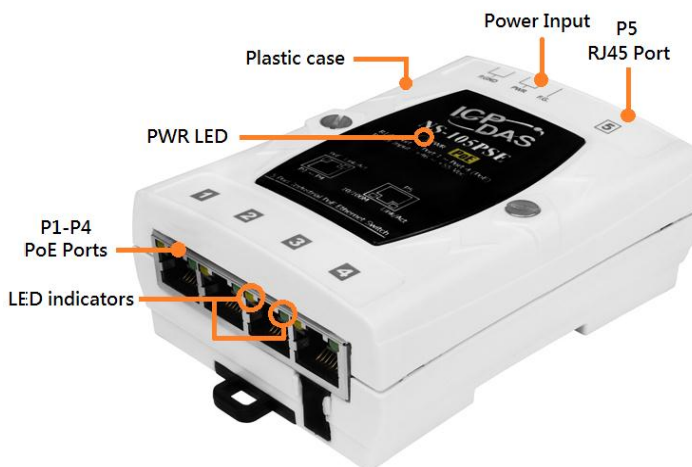
### ◆ Specifications

Technology	
Standards	IEEE 802.3, 802.3u, 802.3x, 802.3af (Power over Ethernet)
Processing Type	Store & forward; wire speed switching
MAC Addresses	1024
Memory Bandwidth	3.2 Gbps
Frame Buffer Memory	512 Kbit
Flow Control	IEEE 802.3x flow control, back pressure flow control
Interface	
RJ-45 Ports	10/100 Base-T(X) auto negotiation speed, F/H duplex mode, and auto MDI/MDI-X connection
LED Indica	Power, Link/Act, 10/100M, Power Device is detected
Ethernet Isolation	1500 Vrms 1 minute
EMS Protection	Yes
Power	
Input Voltage Range	+46 VDC~ +55 VDC
Power Consumption	0.05 A @ 48 VDC without PD loading 1.45 A @ 48 VDC with PD full loading
Protection	Power reverse polarity protection
EMS Protection	Yes
Connector	5-Pin Removable Terminal Block
PoE Technology	
PoE Compliance	100% IEEE 802.3af compliant
PoE Classification	PSE (Power Sourcing Equipment)
PoE Power	Up to 15.4 watts per channel
PoE Operation	Automatic detection and power management
PoE Pin Assignments	V+ (Pin 1, 2), V- (Pin 3, 6)
PoE Disconnect Mode	DC disconnect

<b>Mechanical</b>	
Casing	Plastic
Dimensions (W x L x H)	76 mm x 38 mm x 118 mm
Installation	DIN-Rail Mounting
<b>Environmental</b>	
Operating Temperature	-40 ~ +75 °C
Storage Temperature	-40 ~ +85 °C
Ambient Relative Humidity	10% ~ 90% RH, non-condensing

### ◆ LED Indicator Functions

LED	Color	Description
PWR	Red On	Power is On
	Red Off	Power is Off
P1~P4	Orange On	PoE On
	Orange Off	PoE Off
	Green On	Link to Speed 100 Mbps
	Green Off	Act to Speed 10 Mbps
P5	Orange On	Speed 100 Mbps
	Orange Off	Speed 10 Mbps
	Green On	Link/Act

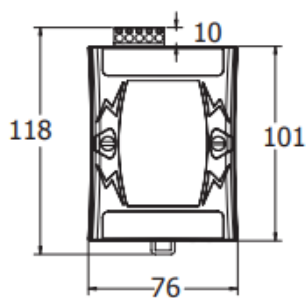


### ◆ Pin assignment

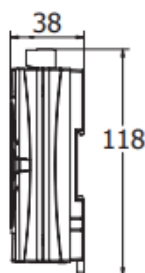
Pin	Terminal No.	Function
P.GND		Power Ground.
P.GND		
PWR		+46 ~ +55 VDC
PWR		
F.G		

### ◆ Dimensions (Units: mm)

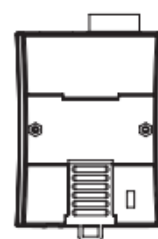
#### NS-105PSE



Front View



Right Side View



Rear View

### ◆ Accessories

DR-120-48	48V/2.5A, 120 W Power Supply with DIN-Rail Mounting
MDR-60-48	24V/1.25A, 60 W Power Supply with DIN-Rail Mounting
DIN-KA52F-48	48V/0.52A, 25 W Power Supply with DIN-Rail Mounting