

Quick Start Guide for μPAC-5000 Series

January 2012, Version 1.0.2

Congratulations!

Congratulations on purchasing μPAC-5000 - the most popular automation solution for remote monitoring and control application. This Quick Start Guide will provide information needed to get started with μPAC-5000. Please also consult the User Manual for detailed information on the setup and use of μPAC-5000.

What's In the Box?

In addition to this guide, the package includes the following items:



μPAC-5000



Software Utility CD



RS-232 cable (CA-0910)



Screw Driver (1C016)



GSM/GPRS Antenna (ANT-421-02)
(for GSM series only)

Technical Support

- **μPAC-5000 User Manual**

CD:\NAPDOS\NAPDOS\upac-5000\Document\
<http://ftp.icpdas.com/pub/cd/8000cd/napdos/upac-5000/document/>

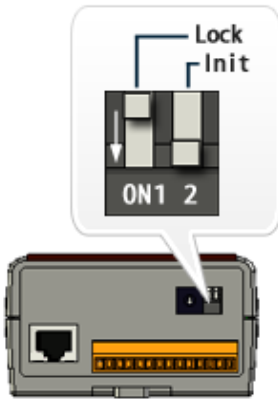
<http://ftp.icpdas.com/pub/cd/8000cd/napdos/upac-5000/document/>

- **μPAC-5000 Website**

<http://www.icpdas.com/products/PAC/up-5000/introduction.htm>

- **ICP DAS Website**

<http://www.icpdas.com/>

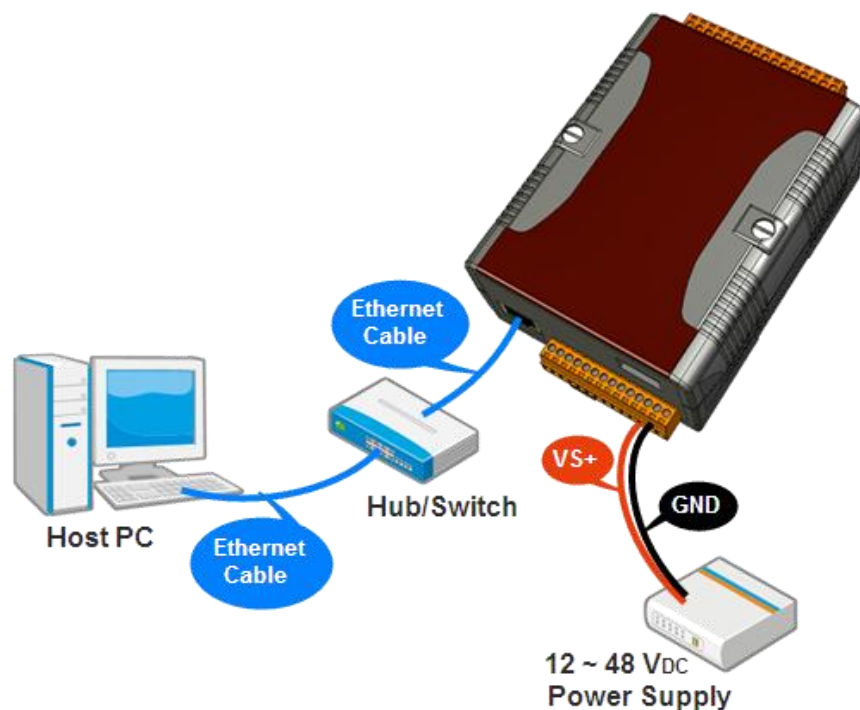


1 Configuring Boot Mode

Make sure the "Lock" switch is placed in the "OFF" position; the "Init" switch is placed in the "ON" position.

2 Connecting to PC, Network and Power

The μPAC-5000 is equipped with a standard Ethernet port (RJ-45) for connecting to an Ethernet Hub/Switch and PC. Moreover, you can also connect the PC directly with an Ethernet cable.



3 Installing the SIM Card and GSM Antenna

You need to install the SIM card and antenna before using the GSM series module.

Step 1: Installing the GSM antenna



Install the GSM antenna to the antenna connector on the top panel tightly.

Step 2: Installing the SIM card



Insert the SIM card into the SIM card holder. First, make sure the beveled corner on the card is facing the bevelled corner on the holder, and the gold-colored contact area on the card is facing up. To eject SIM card, simply, use your finger nail and apply slight pressure.



Before installing or taking out the SIM card, please power off the uPAC-5000.

4 Installing the MiniOS7 Utility

Step 1: Obtain the MiniOS7 Utility



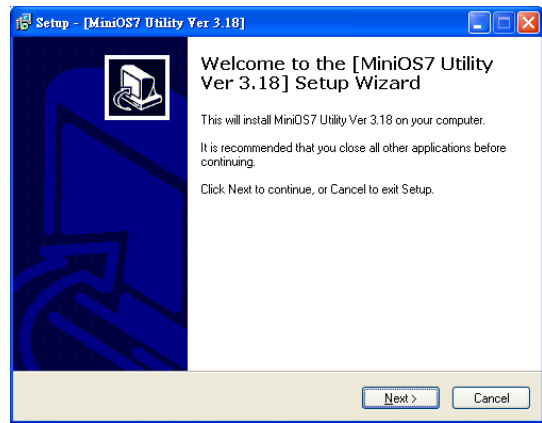
The MiniOS7 Utility can be obtained from companion CD or our FTP site:

CD:\Napdos\minios7\utility\minios7_utility\

ftp://ftp.icpdas.com/pub/cd/8000cd/napdos/minios7/utility/minios7_utility/

Step 2: Follow the prompts to complete the installation

After the installation has been completed, there will be a new shortcut for MiniOS7 Utility on the desktop.



5 Using MiniOS7 Utility to Assign a New IP

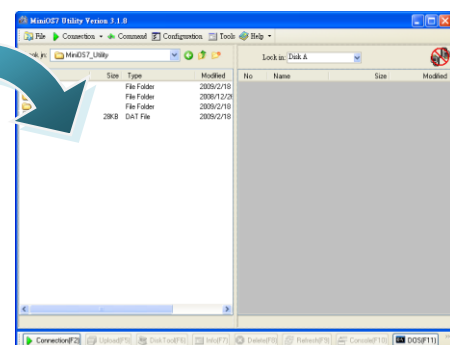
The μ PAC-5000 are Ethernet devices, which comes with a default IP address, therefore, you must first assign a new IP address to the μ PAC-5000.

The factory default IP settings are as follows:

Item	Default
IP Address	192.168.255.1
Subnet Mask	255.255.0.0
Gateway	192.168.0.1

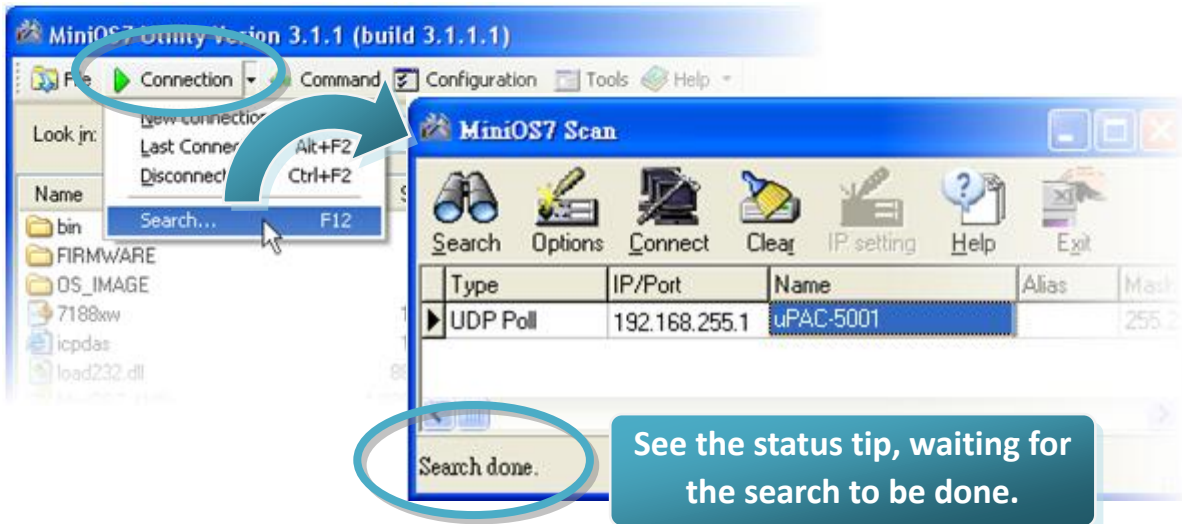
Step 1: Run the MiniOS7 Utility

Double-click the MiniOS7 Utility shortcut on your desktop.



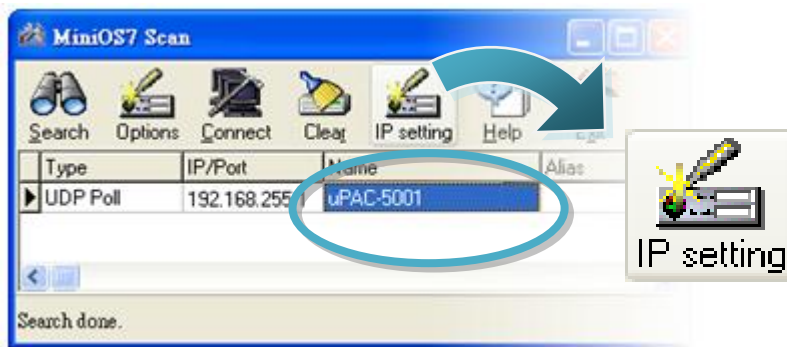
Step 2: Press "F12" or choose "Search" from the "Connection" menu

After pressing "F12" or choosing "Search" from "Connection" menu, the "MiniOS7 Scan" dialog will appear, that will display a list of all the MiniOS7 modules on your network.

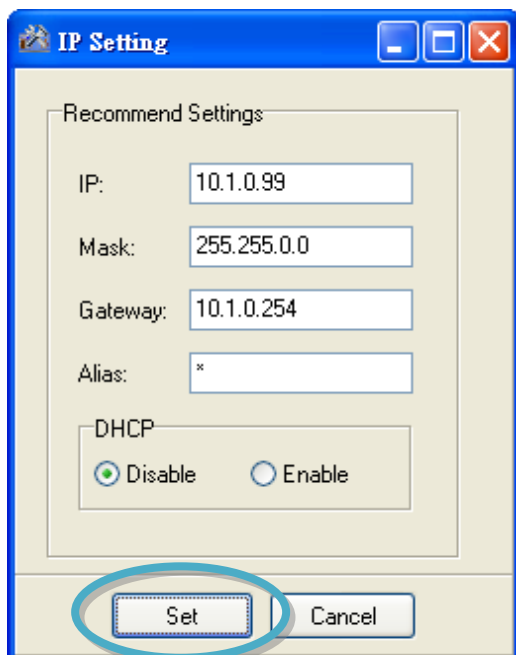


Step 3: Choose the module name and then choose “IP setting” from the toolbar

Choose the module name for fields in the list, and then choose “IP setting” from the toolbar.

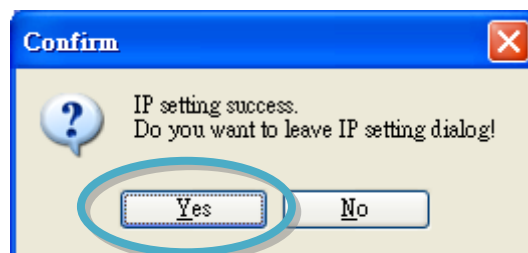


Step 4: Assign a new IP address and then choose “Set” button



Step 5: Choose the “Yes” button

After completing the settings, press the “Yes” to exit the procedure.



Don't close this application. You need to use it to download files into the module.

6 Using MiniOS7 Utility to upload firmware into module

A number of demo programs are available with μ PAC-5000, which can be obtained from:

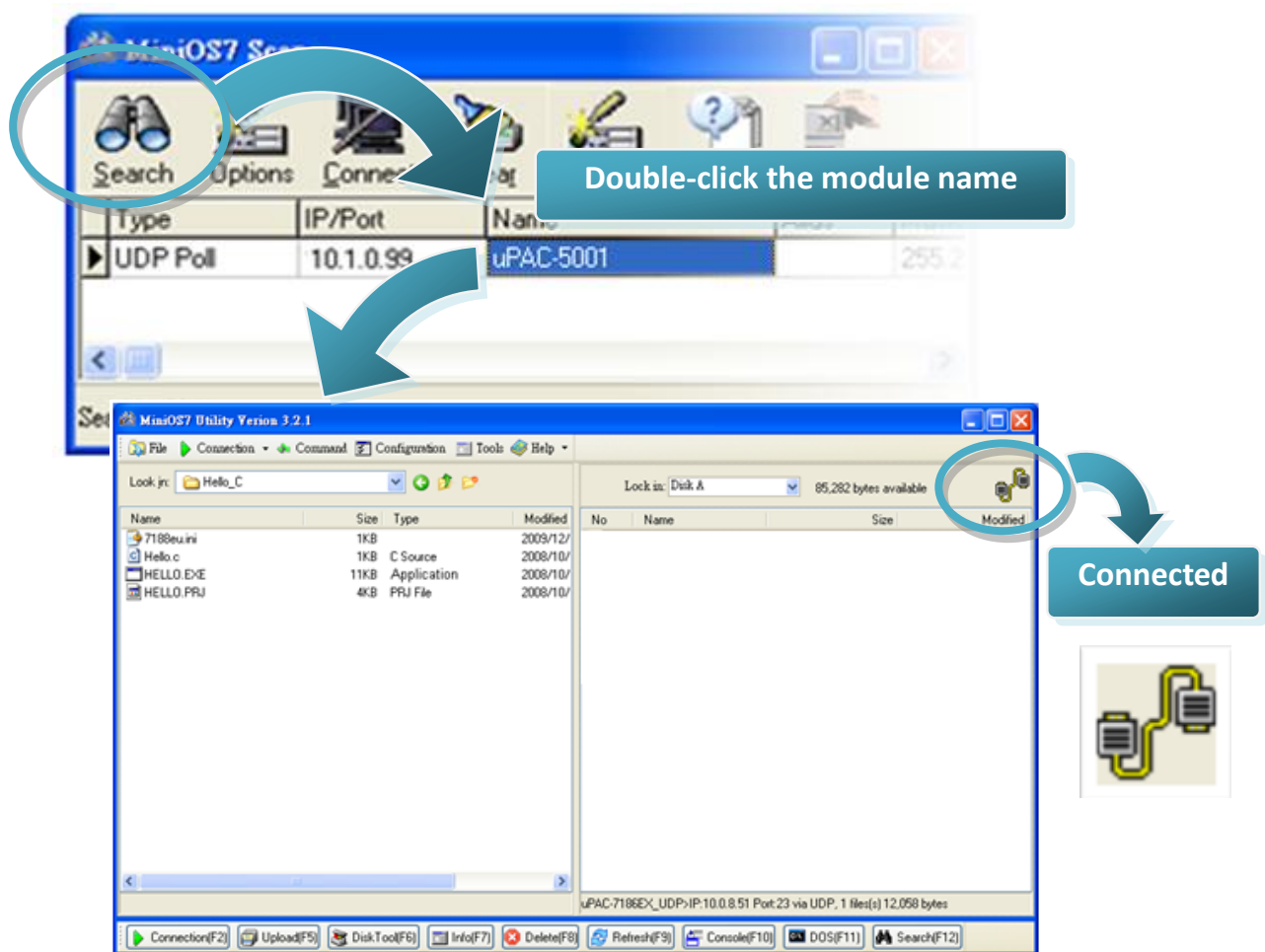
CD:\Napdos\upac-5000\Demo\

<http://ftp.icpdas.com/pub/cd/8000cd/napdos/upac-5000/demo/>

Before downloading the programs, you must first establish a connection between the Host PC and the μ PAC-5000.

Step 1: Press "Search" from the toolbar and then double-click the module name

After pressing "Search" from the toolbar, the MiniOS7 Scan dialog will display a list of all the MiniOS7 modules on your network. Then double-click the module name to establish a connection between PC and μ PAC-5000.



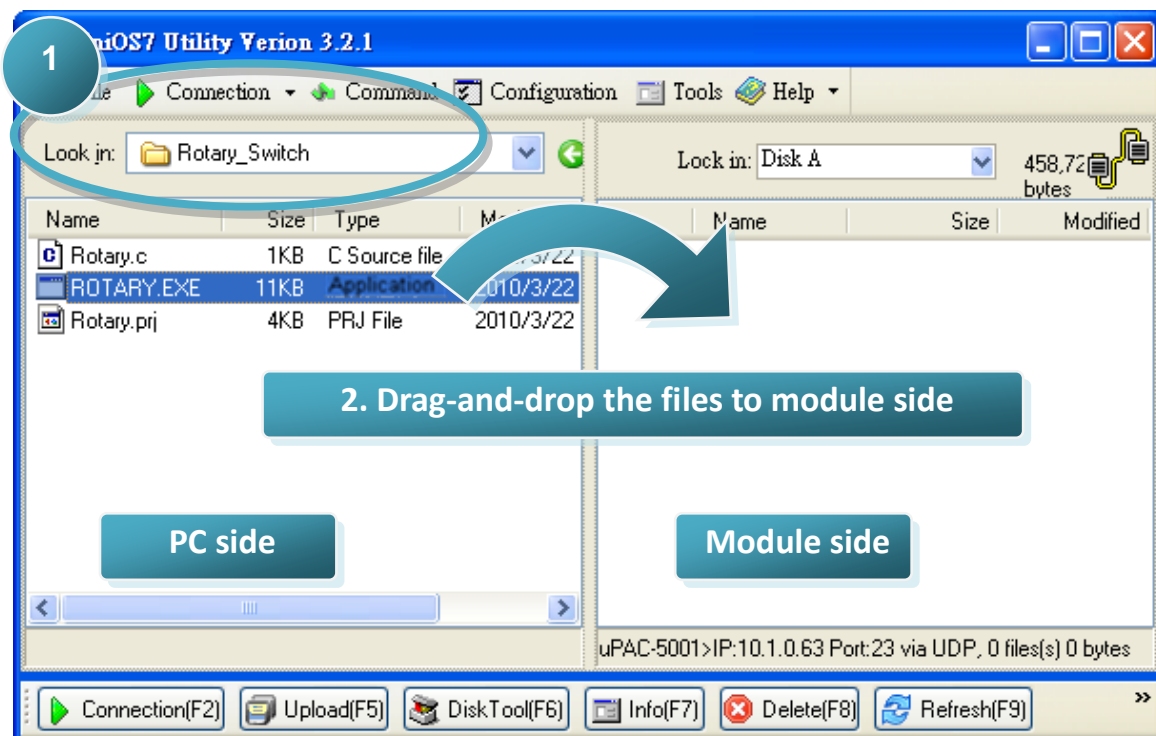
Step2: Click the “Look in” pull-down menu to locate the firmware (*.exe) and then drag-and-drop the file(s) from the PC side to the module side

After the connection is established, click the “Look in” pull-down menu to find the firmware (*.exe), then drag-and-drop the file(s) from the PC side to the module side.

Here we illustrate the firmware upload procedure by using “Rotary_Switch.exe” as an example, which can be obtained from:

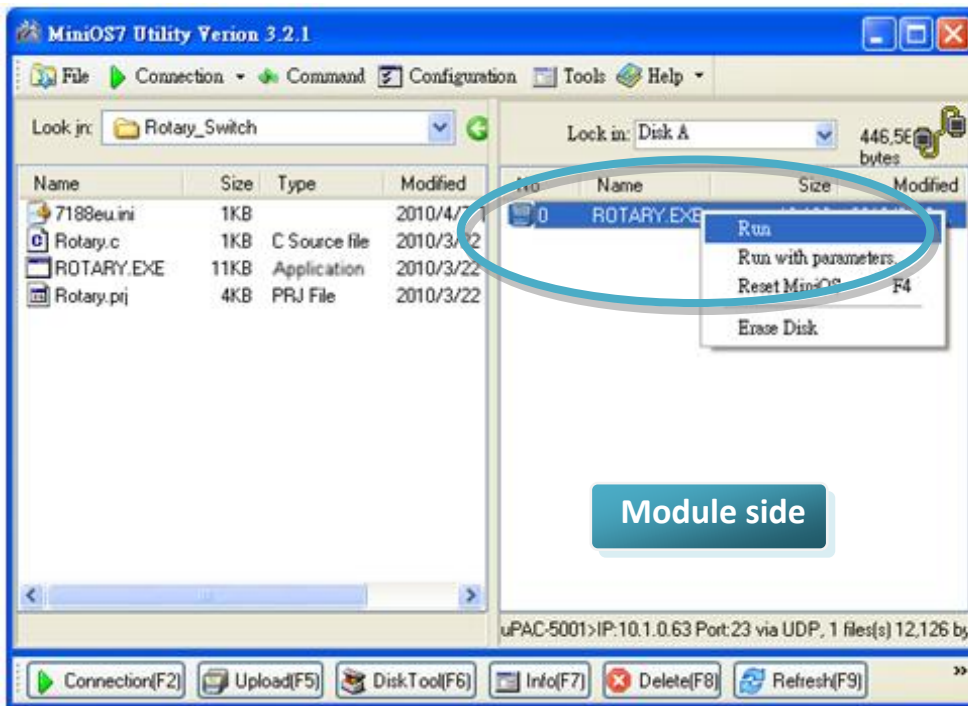
CD:\Napdos\upac-5000\Demo\basic\MISC\Rotary_Switch\

http://ftp.icpdas.com/pub/cd/8000cd/napdos/upac-5000/demo/basic/misc/rotary_switch/



Step 3: Right-click the ROTARY.exe in the module side and select “Run” to run the firmware

After the ROTARY.exe file has been downloaded to the μ PAC-5000, right-click the ROTARY.exe file in the module side and select “Run” to run the program.



After running the ROTARY.exe file in the μ PAC-5000, it will open the following window and show the current position of Rotary Switch.

