

# ***i*-8092 Function Reference**

(Version 1.0)

(For WinPAC, XP-8000/XP-8000-CE6 controller)



**ICP DAS CO., LTD.**

---

## Warranty

All products manufactured by ICPDAS Inc. are warranted against defective materials for a period of one year from the date of delivery to the original purchaser.

## Warning

ICPDAS Inc. assumes no liability for damages consequent to the use of this product. ICPDAS Inc. reserves the right to change this manual at any time without notice. The information furnished by ICPDAS Inc. is believed to be accurate and reliable. However, no responsibility is assumed by ICPDAS Inc. for its use, or for any infringements of patents or other rights of third parties resulting from its use.

## Trademark

The names used for identification only maybe registered trademarks of their respective companies.

## License

The user can use, modify and backup this software on a single machine. The user may not reproduce, transfer or distribute this software, or any copy, in whole or in part.

# Contents

<b>INTRODUCTION .....</b>	<b>6</b>
<b>SYSTEM INITIALIZATION .....</b>	<b>8</b>
2.1  OPERATING-SYSTEM CONFIGURATION .....	8
2.1.1 <i>i8092_scan</i> .....	8
2.1.2 <i>i8092_get_cardinfo</i> .....	10
2.1.3 <i>i8092_open</i> .....	11
2.1.4 <i>i8092_close</i> .....	12
2.1.5 <i>i8092_reset</i> .....	13
2.1.6 <i>i8092_open_all</i> .....	14
2.1.7 <i>i8092_close_all</i> .....	15
2.1.8 <i>i8092_reset_all</i> .....	16
2.2  HARDWARE CONFIGURATION .....	17
2.2.1 <i>i8092_set_pls_cfg</i> .....	17
2.2.2 <i>i8092_set_enc_cfg</i> .....	19
2.2.3 <i>i8092_set_limit</i> .....	20
2.3  HARDWARE CONFIGURATION (OPTIONAL) .....	21
2.3.1 <i>i8092_set_range</i> .....	21
2.3.2 <i>i8092_get_range_settings</i> .....	23
2.3.3 <i>i8092_set_inp</i> .....	24
2.3.4 <i>i8092_set_alarm</i> .....	25
2.3.5 <i>i8092_set_filter</i> .....	26
2.3.6 <i>i8092_set_softlimit</i> .....	28
2.3.7 <i>i8092_load_config</i> .....	29
2.3.8 <i>i8092_servo_on</i> .....	30
<b>HOME SEARCHING .....</b>	<b>31</b>
3.1 <i>i8092_set_home_cfg</i> .....	33
3.2 <i>i8092_near_home_search</i> .....	35
3.3 <i>i8092_home_search</i> .....	37
3.4 <i>i8092_z_phase_search</i> .....	38
<b>INDEPENDENT MOVING FUNCTIONS.....</b>	<b>39</b>
4.1 <i>i8092_velocity_move</i> .....	39
4.2 <i>i8092_const_move</i> .....	41
4.3 <i>i8092_const_moveall</i> .....	42

4.4	<i>i8092_t_move</i> .....	44
4.5	<i>i8092_t_moveall</i> .....	46
4.6	<i>i8092_s_move</i> .....	48
4.7	<i>i8092_s_moveall</i> .....	50
<b>INTERPOLATION MOVING FUNCTIONS .....</b>		<b>52</b>
5.1	INDIVIDUAL INTERPOLATION MOVING.....	52
5.1.1	<i>i8092_t_line2_move</i> .....	52
5.1.2	<i>i8092_s_line2_move</i> .....	55
5.1.3	<i>i8092_t_arc2_move</i> .....	57
5.2	CONTINUOUS INTERPOLATION MOVING .....	60
5.2.1	<i>i8092_conti_interp_begin</i> .....	62
5.2.2	<i>i8092_conti_interp_next_ready</i> .....	64
5.2.3	<i>i8092_conti_line2_move</i> .....	65
5.2.4	<i>i8092_conti_arc2_move</i> .....	67
5.2.5	<i>i8092_conti_interp_end</i> .....	69
<b>OTHER MOTION FUNCTIONS .....</b>		<b>70</b>
6.1	<i>i8092_stop_move</i> .....	70
6.2	<i>i8092_stop_move_all</i> .....	71
6.3	<i>i8092_drv_hold</i> .....	72
6.4	<i>i8092_drv_start</i> .....	73
<b>ADVANCED MOTION CONFIGURATIONS .....</b>		<b>74</b>
7.1	<i>i8092_set_vring</i> .....	74
7.2	<i>i8092_set_mpg</i> .....	76
7.3	<i>i8092_set_int_factor</i> .....	77
<b>MISCELLANEOUS FUNCTIONS.....</b>		<b>79</b>
8.1	<i>i8092_t_change_v</i> .....	79
8.2	<i>i8092_t_set_avtri</i> .....	81
8.3	<i>i8092_change_p</i> .....	82
8.4	<i>i8092_set_cmdcounter</i> .....	83
8.5	<i>i8092_set_enccounter</i> .....	84
<b>STATUS.....</b>		<b>85</b>
9.1	<i>i8092_motion_done</i> .....	85
9.2	<i>i8092_get_cmdcounter</i> .....	87
9.3	<i>i8092_get_enccounter</i> .....	88
9.4	<i>i8092_get_speed</i> .....	89

9.5	<i>i8092_get_acc</i> .....	90
9.6	<i>i8092_get_mdi_status</i> .....	91
9.7	<i>i8092_get_in3</i> .....	92
9.8	<i>i8092_get_int_status</i> .....	93
9.9	<i>i8092_get_error_status</i> .....	94
<b>FRNET I/O EXTENSION.....</b>		<b>95</b>
10.1	<i>i8092_get_FRnet_DI</i> .....	95
10.2	<i>i8092_set_FRnet_DO</i> .....	97
<b>ERROR CODE .....</b>		<b>98</b>

# Introduction

This software package is dedicated to i-8092 pulse-based motion controller. It includes the driver and ANSI-C Library for WinPAC and XP-8000/XP-8000-CE6 (XPAC Compact Edition).

The slot number that the module installed on will be referred by each function in Library. This slot number helps to identify multiple i-8092 modules in WinPAC / XP-8000/XP-8000-CE6.

There are samples that are provided for Microsoft® Visual Studio 2005 C++ and Embedded Visual C++ to demonstrate the functions of i-8092 Library. Some samples need the Generic-Type terminal-board (DN-8237G) to connect the external sensors, output pulse and encoder-input.

This documentation provides the detailed information of i-8092 APIs, including the function-decelerations, definitions of both parameters and return codes. The APIs will be cataloged and described in the following chapters:

- CHAPTER 2 – System Initialization
- CHAPTER 3 – Automatic Home Search
- CHAPTER 4 – Independent Moving Functions
- CHAPTER 5 – Interpolation Moving Functions
- CHAPTER 6 – Other Motion Functions
- CHAPTER 7 – Advanced Motion Configurations
- CHAPTER 8 – Miscellaneous Functions
- CHAPTER 9 – Status
- CHAPTER 10 – FRnet I/O extension

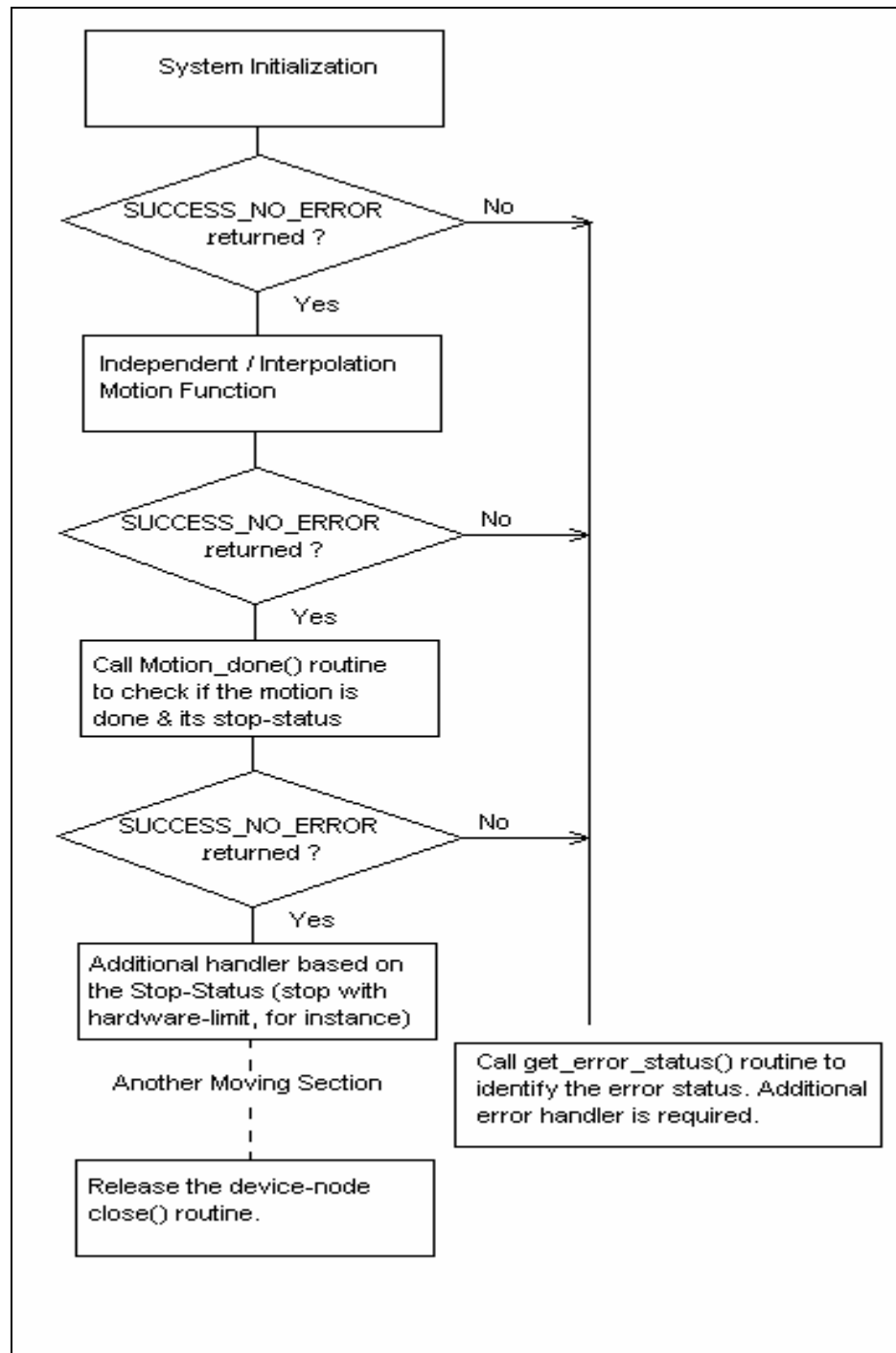


Figure 1 - typical programming following-chart

# System Initialization

## 2.1 Operating-System Configuration

The functions in this chapter provide the interface to WinPAC / XP-8000 / XP-8000-CE6. By calling these functions, your applications can scan all active i-8092 modules in your PAC, and get the specific slot-number. Open the module and access the internal Motion-Control ASIC with the other functions in i-8092 Library.

### 2.1.1 i8092\_scan

```
short i8092_scan(short* pModuleNum, BYTE* pAvailModules = NULL)
```

**Description:**

This function scans all active i-8092 modules in your WinPAC / XP-8000 / XP-8000-CE6. The pModuleNum saves the numbers of active i-8092 modules. The optional user-provided Array, pAvailModules, indicates the presence of active i-8092 module. (1: present, 0: absent)

**Parameters:**

pModuleNum: The pointer to the memory that stores the numbers of active i-8092 modules.

pAvailModules: The address of user-provided **BYTE**-Array. Based on the slot-number, each element indicates the presence of active i-8092 module. The user must prepare one **BYTE**-Array with **I8092\_MaxModules** elements.

For instance, there are three active i-8092 modules with slot-number 3, 5 and 7. The content of pAvailModules Array will be  
{ 0, 0, 0, 1, 0, 1, 0, 1 }



**Return Code:**

SUCCESS\_NO\_ERROR: The function returns successfully.

ERROR\_NO\_MODULE\_FOUND: There is no active module available in your PAC.

ERROR\_ACCESS\_VIOLATION\_DATA\_COPY: Some system exception occurs while copying memory, please check the pointer-type parameter you assign to this function.

## 2.1.2 i8092\_get\_cardinfo

```
short i8092_get_cardinfo(int ScannedIndex, BYTE* pSlotNum, WORD* pModuleID = NULL)
```

### **Description:**

This function returns the slot-number based on the scanned-index. This routine will get the slot number that i-8092 module is installed on.

### **Parameters:**

ScannedIndex: The index that the active i-8092 module is scanned. This index begins from 0, and is less than the active i-8092 modules.

pSlotNum: The pointer to the memory that stores the specific slot-number.

pModuleID: The pointer to the memory that stores the module-ID. This parameter is optional.

### **Return Code:**

SUCCESS\_NO\_ERROR: The function returns successfully.

ERROR\_NO\_MODULE\_FOUND: There is no active module available in your system.

ERROR\_INVALID\_SCANNED\_INDEX: Indicates the ScannedIndex is not less than the numbers of active I-8092 modules.

ERROR\_ACCESS\_VIOLATION\_DATA\_COPY: Some system exception occurs while copying memory, please check the pointer-type parameter you assign to this function.

## 2.1.3 i8092\_open

short i8092\_open(BYTE bSlotNum)

### Description:

This function opens the device node of i-8092 based on the specific slot-number. If this function returns successfully, the process that calls this function owns the device until i8092\_close() is called. The device node of i-8092 is ought to be owned before accessing the Motion-Control ASIC with the other functions. It's recommended to call i8092\_scan() and i8092\_get\_cardinfo() to get the slot-number.

### Parameters:

bSlotNum: The specific slot number that i-8092 installed on.

### Return Code:

SUCCESS\_NO\_ERROR: The function returns successfully.

ERROR\_INVALID\_CARD\_ID: There is no active i-8092 module on the given slot, bSlotNum; or the given slot-number is invalid (for instance, slot-number is assigned to 254).

ERROR\_IOCTL\_FAILED: Cannot get the settings of **Range** register, please call GetLastError() for further system information.

ERROR\_DEVICE\_OPEN: Fail to open the device-node of i-8092. Please make sure no other process owns that i-8092 module.

## 2.1.4 i8092\_close

short i8092\_close(BYTE bSlotNum)

### **Description:**

This function closes the device node of i-8092 based on the specific slot-number. After calling this function, i-8092 module will be released, and other process can open it.

### **Parameters:**

bSlotNum: The specific slot number that i-8092 installed on.

### **Return Code:**

SUCCESS\_NO\_ERROR: The function returns successfully.

ERROR\_INVALID\_CARD\_ID: There is no active i-8092 module on the given slot, bSlotNum; or the given slot-number is invalid (for instance, slot-number is assigned to 254).

ERROR\_DEVICE\_CLOSE: Fail to close the device-node of i-8092.

## 2.1.5 i8092\_reset

short i8092\_reset(BYTE bSlotNum)

### **Description:**

This function re-sets the internal Motion-Control ASIC and re-configures the basic registers with default value. After calling this function, all configuration set before will be ignored. This function terminates the current motion, too.

### **Parameters:**

bSlotNum: The specific slot number that i-8092 installed on.

### **Return Code:**

SUCCESS\_NO\_ERROR: The function returns successfully.

ERROR\_INVALID\_CARD\_ID: There is no active i-8092 module on the given slot, bSlotNum; or the given slot-number is invalid (for instance, slot-number is assigned to 254).

ERROR\_MODULE\_RESET: Cannot reset the Motion-Control ASIC, please call GetLastError() for further system information.

## 2.1.6 i8092\_open\_all

short i8092\_open\_all(void)

### **Description:**

This function opens the all active i-8092 modules. If this function returns successfully, the process that calls this function owns all devices until i8092\_close\_all() is called.

### **Parameters:**

None

### **Return Code:**

SUCCESS\_NO\_ERROR: The function returns successfully.

ERROR\_IOCTL\_FAILED: Cannot get the settings of **Range** register, please call GetLastError() for further system information.

ERROR\_DEVICE\_OPEN: Fail to open the device-node of i-8092. Please make sure no other process occupies that i-8092 module.

## 2.1.7 i8092\_close\_all

short i8092\_close\_all(void)

### **Description:**

This function closes all i-8092 modules that are opened by one application. After calling this function, the i-8092 modules will be released, and other process can open them.

### **Parameters:**

None

### **Return Code:**

SUCCESS\_NO\_ERROR: The function returns successfully.

ERROR\_DEVICE\_CLOSE: Fail to close the device-node of i-8092.

## 2.1.8 i8092\_reset\_all

short i8092\_reset\_all(void)

### **Description:**

This function re-sets the internal Motion-Control ASIC of all i-8092 modules that are opened by one application, and re-configures the basic registers with default value. After calling this function, all configuration set before will be ignored. This function terminates the current motion of the active i-8092 modules, too.

### **Parameters:**

None

### **Return Code:**

SUCCESS\_NO\_ERROR: The function returns successfully.

ERROR\_MODULE\_RESET: Cannot reset the Motion-Control ASIC, please call GetLastError() for further system information.



## 2.2 Hardware Configuration

After the i-8092 module is activated, the pre-defined configurations are assigned to the relative registers of Motion-Control ASIC. The functions in this chapter configure/change the default-settings and polarities of output-pulse, input-encoder and hardware-limit sensors.

### 2.2.1 i8092\_set\_pls\_cfg

short i8092\_set\_pls\_cfg(BYTE bSlotNum, WORD wAxis, WORD wPulseMode, WORD wPulseLogic, WORD wDirectionLogic)

#### Description:

This function configures the output-pulse mode of i-8092.

#### Parameters:

bSlotNum: The specific slot number that i-8092 installed on.

wAxis: Can be one of AXIS\_X or AXIS\_Y.

wPulseMode: PULSE\_MODE\_CW\_CCW or PULSE\_MODE\_PULSE\_DIRECTION.

wPulseLogic: PULSE\_LOGIC\_ACTIVE\_HIGH or PULSE\_LOGIC\_ACTIVE\_LOW

wDirectionLogic: PULSE\_FORWARD\_ACTIVE\_HIGH or PULSE\_FORWARD\_ACTIVE\_LOW. This parameter will be ignored if the parameter **wPulseMode** is assigned to PULSE\_MODE\_CW\_CCW.

#### Return Code:

SUCCESS\_NO\_ERROR: The function returns successfully.

ERROR\_INVALID\_CARD\_ID: There is no active i-8092 module on the given slot, bSlotNum; or the given slot-number is invalid (for instance, slot-number is assigned to 254).

ERROR\_MULTI\_AXES\_ASSIGNED: Multiple axes are assigned to parameter **wAxis**.

ERROR\_NO\_VALID\_AXIS\_ASSIGNED: No valid axis ID is assigned to parameter **wAxis**.

ERROR\_INVALID\_PULSE\_MODE: Neither PULSE\_MODE\_CW\_CCW nor PULSE\_MODE\_PULSE\_DIRECTION is assigned to parameter **wPulseMode**.

ERROR\_INVALID\_PULSE\_LEVEL: Neither PULSE\_LOGIC\_ACTIVE\_HIGH nor PULSE\_LOGIC\_ACTIVE\_LOW is assigned to parameter **wPulseLogic**.

ERROR\_INVALID\_PULSE\_DIRECTION: Neither PULSE\_FORWARD\_ACTIVE\_HIGH nor PULSE\_FORWARD\_ACTIVE\_LOW is assigned to parameter **wDirectionLogic**.

ERROR\_PULSE\_MODE\_SET: Cannot change the output pulse mode, please call GetLastError() for further system information.

## 2.2.2 i8092\_set\_enc\_cfg

short i8092\_set\_enc\_cfg(BYTE bSlotNum, WORD wAxis, WORD wEncoderMode, BYTE bCounterSource = 0)

### Description:

This function configures the input-encoder mode of i-8092.

### Parameters:

bSlotNum: The specific slot number that i-8092 installed on.

wAxis: Can be one of AXIS\_X or AXIS\_Y.

wEncoderMode: ENCODER\_MODE\_AB, ENCODER\_MODE\_AB\_DIVID\_2,  
ENCODER\_MODE\_AB\_DIVID\_4 or ENCODER\_MODE\_CW\_CCW.

bCounterSource: The optional parameter that is reserved for future.

### Return Code:

SUCCESS\_NO\_ERROR: The function returns successfully.

ERROR\_INVALID\_CARD\_ID: There is no active i-8092 module on the given slot, bSlotNum; or the given slot-number is invalid (for instance, slot-number is assigned to 254).

ERROR\_MULTI\_AXES\_ASSIGNED: Multiple axes are assigned to parameter **wAxis**.

ERROR\_NO\_VALID\_AXIS\_ASSIGNED: No valid axis ID is assigned to parameter **wAxis**.

ERROR\_INVALID\_ENCODER\_MODE: No valid encoder mode is assigned to parameter **wEncoderMode**.

ERROR\_ENCODER\_MODE\_SET: Cannot change the input encoder mode, please call GetLastError() for further system information.

## 2.2.3 i8092\_set\_limit

short i8092\_set\_limit(BYTE bSlotNum, WORD wAxis, WORD wLimitLogic, WORD wStopMode = LIMIT\_STOP\_SUDDEN)

### Description:

This function configures the polarity and stop-mode of hardware-limit sensor.

### Parameters:

bSlotNum: The specific slot number that i-8092 installed on.

wAxis: Can be one of AXIS\_X or AXIS\_Y.

wLimitLogic: LIMIT\_LOGIC\_ACTIVE\_HIGH or LIMIT\_LOGIC\_ACTIVE\_LOW.

wStopMode: LIMIT\_STOP\_SUDDEN or LIMIT\_STOP\_SLOWDOWN. This optional parameter is set as LIMIT\_STOP\_SUDDEN by default.

### Return Code:

SUCCESS\_NO\_ERROR: The function returns successfully.

ERROR\_INVALID\_CARD\_ID: There is no active i-8092 module on the given slot, bSlotNum; or the given slot-number is invalid (for instance, slot-number is assigned to 254).

ERROR\_MULTI\_AXES\_ASSIGNED: Multiple axes are assigned to parameter **wAxis**.

ERROR\_NO\_VALID\_AXIS\_ASSIGNED: No valid axis ID is assigned to parameter **wAxis**.

ERROR\_INVALID\_LIMIT\_LOGIC: Neither LIMIT\_LOGIC\_ACTIVE\_HIGH nor LIMIT\_LOGIC\_ACTIVE\_LOW is assigned to parameter **wLimitLogic**.

ERROR\_INVALID\_STOP\_MODE: Neither LIMIT\_STOP\_SUDDEN nor LIMIT\_STOP\_SLOWDOWN is assigned to parameter **wStopMode**.

ERROR\_LIMIT\_SENSOR\_SET: Cannot configure the hardware-limit sensor, please call GetLastError() for further system information.

## 2.3 Hardware Configuration (optional)

The functions in this chapter enable/disable the additional signals, including INP and ALARM. The signal-filtering feature is built in Motion-Control ASIC, and can be configured with `i8092_set_filter()`.

The **Range** register of Motion-Control ASIC can be configured with `i8092_set_range()` function.

Assigning different value to the **Range** register, the accuracy and valid-range of speed, acceleration/deceleration and jerk/deceleration-rate will be changed.

The Motion-Control ASIC also provides the software-limit feature, and is enabled/configured with `i8092_set_softlimit()`. Another helpful function, `i8092_load_config()`, configures all i-8092 modules with the pre-defined configuration file, `I8092_Config.bin`.

### 2.3.1 i8092\_set\_range

```
short i8092_set_range(BYTE bSlotNum, WORD wAxis, DWORD dwRange)
```

#### Description:

This function changes the **Range** register to change the accuracy and valid-range of speed, acceleration/deceleration and jerk/deceleration-rate. The relationship between **Range** register and Speed/Acceleration/Jerk is illustrated in Figure 2. Another function, `i8092_get_range_settings()`, gets the current valid-range of speed, acceleration/deceleration and jerk/deceleration-rate.

$\text{Multiple} = \frac{8,000,000}{R}$	$\text{Drive Speed (PPS)} = V \times \underbrace{\frac{8,000,000}{R}}_{\text{Multiple}}$
$\text{Jerk (PPS/SEC}^2\text{)} = \frac{62.5 \times 10^6}{K} \times \underbrace{\frac{8,000,000}{R}}_{\text{Multiple}}$	$\text{Deceleration (PPS/SEC)} = D \times 125 \times \underbrace{\frac{8,000,000}{R}}_{\text{Multiple}}$
$\text{Acceleration (PPS/SEC)} = A \times 125 \times \underbrace{\frac{8,000,000}{R}}_{\text{Multiple}}$	$\text{Initial Speed (PPS)} = SV \times \underbrace{\frac{8,000,000}{R}}_{\text{Multiple}}$

Figure 2 – relationship between **Range** register and Speed/Acceleration/Jerk

#### Parameters:

`bSlotNum`: The specific slot number that i-8092 installed on.

`wAxis`: Can be one of `AXIS_X` or `AXIS_Y`.

`dwRange`: The value to be assigned to the **Range** register (16,000 ~ 8,000,000)

**Return Code:**

SUCCESS\_NO\_ERROR: The function returns successfully.

ERROR\_INVALID\_CARD\_ID: There is no active i-8092 module on the given slot, bSlotNum; or the given slot-number is invalid (for instance, slot-number is assigned to 254).

ERROR\_MULTI\_AXES\_ASSIGNED: Multiple axes are assigned to parameter **wAxis**.

ERROR\_NO\_VALID\_AXIS\_ASSIGNED: No valid axis ID is assigned to parameter **wAxis**.

ERROR\_INVALID\_RANGE: The value to be assigned to **Range** register is invalid.

ERROR\_RANGE\_CHANGE: Cannot change the content of **Range** register, please call GetLastError() for further system information.

## 2.3.2 i8092\_get\_range\_settings

short i8092\_get\_range\_settings(BYTE bSlotNum, WORD wAxis, AXIS\_RANGE\_SETTINGS\* pAxisRangeSetting)

### Description:

This function gets the valid-range of Speed, Acceleration/Deceleration and Jerk/Deceleration-Increasing-Rate based on the setting of **Range** register. Please refer to the 'Set\_Range' sample.

### Parameters:

bSlotNum: The specific slot number that i-8092 installed on.

wAxis: Can be one of AXIS\_X or AXIS\_Y.

pAxisRangeSetting: The pointer to the data structure that stores the valid-range of Speed, Acceleration/Deceleration and Jerk/Deceleration-Increasing-Rate.

### Return Code:

SUCCESS\_NO\_ERROR: The function returns successfully.

ERROR\_INVALID\_CARD\_ID: There is no active i-8092 module on the given slot, bSlotNum; or the given slot-number is invalid (for instance, slot-number is assigned to 254).

ERROR\_MULTI\_AXES\_ASSIGNED: Multiple axes are assigned to parameter **wAxis**.

ERROR\_NO\_VALID\_AXIS\_ASSIGNED: No valid axis ID is assigned to parameter **wAxis**.

ERROR\_ACCESS\_VIOLATION\_DATA\_COPY: Some system exception occurs while copying memory, please check the pointer-type parameter you assign to this function.

## 2.3.3 i8092\_set\_inp

short i8092\_set\_inp(BYTE bSlotNum, WORD wAxis, WORD wINPEnable, WORD wINPLogic)

### Description:

This function enables/disables INP feature and configures its polarity. This feature is active until calling i8092\_set\_inp() with INP\_DISABLE\_FEATURE.

### Parameters:

bSlotNum: The specific slot number that i-8092 installed on.

wAxis: Can be one of AXIS\_X or AXIS\_Y.

wINPEnable: INP\_ENABLE\_FEATURE or INP\_DISABLE\_FEATURE.

wINPLogic: INP\_LOGIC\_ACTIVE\_HIGH or INP\_LOGIC\_ACTIVE\_LOW.

### Caveat:

If the incorrect setting is assigned to parameter **wINPLogic**, the i8092\_motion\_done() will report MOTION\_NOT\_DONE always.

It's recommended to run **i8092\_EzGo.exe** to check the correct settings.

### Return Code:

SUCCESS\_NO\_ERROR: The function returns successfully.

ERROR\_INVALID\_CARD\_ID: There is no active i-8092 module on the given slot, bSlotNum; or the given slot-number is invalid (for instance, slot-number is assigned to 254).

ERROR\_MULTI\_AXES\_ASSIGNED: Multiple axes are assigned to parameter **wAxis**.

ERROR\_NO\_VALID\_AXIS\_ASSIGNED: No valid axis ID is assigned to parameter **wAxis**.

ERROR\_INVALID\_INP\_ENABLE: Neither INP\_ENABLE\_FEATURE nor INP\_DISABLE\_FEATURE is assigned to parameter **wINPEnable**.

ERROR\_INVALID\_INP\_LOGIC\_LEVEL: Neither INP\_LOGIC\_ACTIVE\_HIGH nor INP\_LOGIC\_ACTIVE\_LOW is assigned to parameter **wINPLogic**.

ERROR\_INP\_SIGNAL\_SET: Cannot set the INP configuration, please call GetLastError() for further system information.



## 2.3.4 i8092\_set\_alarm

short i8092\_set\_alarm(BYTE bSlotNum, WORD wAxis, WORD wAlarmEnable, WORD wAlarmLogic)

### Description:

This function enables/disables ALARM feature and configures its polarity. This feature is active until calling i8092\_set\_alarm() with ALARM\_DISABLE\_FEATURE.

### Parameters:

bSlotNum: The specific slot number that i-8092 installed on.

wAxis: Can be one of AXIS\_X or AXIS\_Y.

wAlarmEnable: ALARM\_ENABLE\_FEATURE or ALARM\_DISABLE\_FEATURE.

wAlarmLogic: ALARM\_LOGIC\_ACTIVE\_HIGH or ALARM\_LOGIC\_ACTIVE\_LOW.

### Return Code:

SUCCESS\_NO\_ERROR: The function returns successfully.

ERROR\_INVALID\_CARD\_ID: There is no active i-8092 module on the given slot, bSlotNum; or the given slot-number is invalid (for instance, slot-number is assigned to 254).

ERROR\_MULTI\_AXES\_ASSIGNED: Multiple axes are assigned to parameter **wAxis**.

ERROR\_NO\_VALID\_AXIS\_ASSIGNED: No valid axis ID is assigned to parameter **wAxis**.

ERROR\_INVALID\_ALARM\_ENABLE: Neither ALARM\_ENABLE\_FEATURE nor ALARM\_DISABLE\_FEATURE is assigned to parameter **wAlarmEnable**.

ERROR\_INVALID\_ALARM\_LOGIC\_LEVEL: Neither ALARM\_LOGIC\_ACTIVE\_HIGH nor ALARM\_LOGIC\_ACTIVE\_LOW is assigned to parameter **wAlarmLogic**.

ERROR\_ALARM\_SIGNAL\_SET: Cannot set the ALARM configuration, please call GetLastError() for further system information.

## 2.3.5 i8092\_set\_filter

short i8092\_set\_filter(BYTE bSlotNum, WORD wAxis, WORD wFilterEnable, WORD wFilterCfg, WORD wDelayTime)

### Description:

This function enables/disables the signal filter built in Motion-Control ASIC, and configures the signal-sources and delay-time. This feature is active until calling i8092\_set\_filter() with FILTER\_DISABLE\_FEATURE.

### Parameters:

bSlotNum: The specific slot number that i-8092 installed on.

wAxis: Can be one of AXIS\_X or AXIS\_Y.

wFilterEnable: FILTER\_ENABLE\_FEATURE or FILTER\_DISABLE\_FEATURE.

wFilterCfg: The following signal-sources can be combined with OR ( | ) operator.

FILTER\_CFG\_EMG\_EL\_ORG\_NORG (for EMG, hardware-limit, Home and Near-Home),

FILTER\_CFG\_ENCODER\_Z\_PHASE (for Z-Phase/INDEX),

FILTER\_CFG\_INP\_ALARM (for INP and ALARM),

FILTER\_CFG\_EXP\_EXPLSN (for manual-pulse-generator),

FILTER\_CFG\_IN3 (for digital-input IN3)

wDelayTime: Can be one of the following delay-time settings (unit: micro-second):

FILTER\_DELAY\_2us,

FILTER\_DELAY\_256us,

FILTER\_DELAY\_512us,

FILTER\_DELAY\_1024us,

FILTER\_DELAY\_2048us,

FILTER\_DELAY\_4096us,

FILTER\_DELAY\_8192us,

FILTER\_DELAY\_16384us

### Return Code:

SUCCESS\_NO\_ERROR: The function returns successfully.

ERROR\_INVALID\_CARD\_ID: There is no active i-8092 module on the given slot, bSlotNum; or the given slot-number is invalid (for instance, slot-number is assigned to 254).

ERROR\_MULTI\_AXES\_ASSIGNED: Multiple axes are assigned to parameter **wAxis**.

ERROR\_NO\_VALID\_AXIS\_ASSIGNED: No valid axis ID is assigned to parameter **wAxis**.

ERROR\_INVALID\_FILTER\_ENABLE: Neither FILTER\_ENABLE\_FEATURE nor

FILTER\_DISABLE\_FEATURE is assigned to parameter **wFilterEnable**.

ERROR\_INVALID\_FILTER\_CONFIGURATION: Invalid Filter-Source combination is assigned to

parameter **wFilterCfg**.

ERROR\_INVALID\_FILTER\_DELAY\_TIME: Invalid delay-time is assigned to parameter **wDelayTime**.

ERROR\_FILTER\_SET: Cannot set the Filter configuration, please call GetLastError() for further system information.

## 2.3.6 i8092\_set\_softlimit

short i8092\_set\_softlimit(BYTE bSlotNum, WORD wAxis, WORD wSWLimitEnable, WORD wCmpSource, long LimitPositive, long LimitNegative)

### Description:

The internal comparators of Motion-Control ASIC provide the software-limit feature. The Motion-Control ASIC will monitor either Logic-Command counter or Encoder-Position counter. Once the content of these counters exceeds the pre-defined value, the deceleration stop will be started. This feature is active until calling i8092\_set\_softlimit() with SW\_LIMIT\_DISABLE\_FEATURE.

### Parameters:

bSlotNum: The specific slot number that i-8092 installed on.

wAxis: Can be one of AXIS\_X or AXIS\_Y.

wSWLimitEnable: SW\_LIMIT\_ENABLE\_FEATURE or SW\_LIMIT\_DISABLE\_FEATURE.

wCmpSource: CMP\_SRC\_LOGIC\_COMMAND or CMP\_SRC\_ENCODER\_POSITION.

LimitPositive: The pre-defined value for the comparator in forward direction.

LimitNegative: The pre-defined value for the comparator in reverse direction.

### Return Code:

SUCCESS\_NO\_ERROR: The function returns successfully.

ERROR\_INVALID\_CARD\_ID: There is no active i-8092 module on the given slot, bSlotNum; or the given slot-number is invalid (for instance, slot-number is assigned to 254).

ERROR\_MULTI\_AXES\_ASSIGNED: Multiple axes are assigned to parameter **wAxis**.

ERROR\_NO\_VALID\_AXIS\_ASSIGNED: No valid axis ID is assigned to parameter **wAxis**.

ERROR\_INVALID\_SOFTWARE\_LIMIT\_ENABLE: Neither SW\_LIMIT\_ENABLE\_FEATURE nor SW\_LIMIT\_DISABLE\_FEATURE is assigned to parameter **wSWLimitEnable**.

ERROR\_INVALID\_SOFTWARE\_LIMIT\_COMPARATOR\_SOURCE: Neither CMP\_SRC\_LOGIC\_COMMAND nor CMP\_SRC\_ENCODER\_POSITION is assigned to parameter **wCmpSource**.

ERROR\_SW\_LIMIT\_SET: Cannot configure the software-limit settings, please call GetLastError() for further system information.

## 2.3.7 i8092\_load\_config

short i8092\_load\_config(char\* FileName = NULL)

### Description:

This function loads the pre-defined configuration file and configures all active -8092 modules automatically. The i8092\_open\_all() is needed to be called before this function.

It's strongly recommended to change the settings of configuration file with the utility, i8092\_EzGO.exe.

The involved configuration routines are:

i8092\_set\_pls\_cfg(), i8092\_set\_enc\_cfg(), i8092\_set\_limit(), i8092\_set\_home\_cfg(), i8092\_set\_softlimit(), i8092\_set\_alarm(), i8092\_set\_inp() and i8092\_set\_filter().

### Parameters:

FileName: The pointer to the memory that stores the pathname of configuration file. Without assigning pathname, the default configuration file, \System\_Disk\ICPDAS\System\i8092\_Config.bin, will be loaded. This parameter is optional, and NULL is assigned by default.

### Return Code:

SUCCESS\_NO\_ERROR: The function returns successfully.

ERROR\_CONFIG\_FILE\_LOAD: Cannot locate the configuration file.

ERROR\_CONFLICT\_IN\_CONFIG\_FILE: The active i-8092 modules settings is not identical to the configuration file.

ERROR\_INVALID\_FILE\_HANDLE: There is no valid file-handle is related to the i-8092 module recorded in configuration. Please make sure the i8092\_open\_all() had been called and returns SUCCESS\_NO\_ERROR..

Other return codes please refer to the following functions:

i8092\_set\_pls\_cfg, i8092\_set\_enc\_cfg, i8092\_set\_limit, i8092\_set\_softlimit, i8092\_set\_inp, i8092\_set\_alarm and i8092\_set\_filter.

## 2.3.8 i8092\_servo\_on

short i8092\_servo\_on(BYTE bSlotNum, WORD wAxis, BYTE bServoON, BYTE bAutoOFF)

### Description:

This function turns on/off the Servo.

### Parameters:

bSlotNum: The specific slot number that i-8092 installed on.

wAxis: Can be one of AXIS\_X or AXIS\_Y.

bServoON: SERVO\_ON or SERVO\_OFF.

bAutoOFF: SERVO\_MANUAL\_OFF: turn off Servo manually.

SERVO\_AUTO\_OFF: turn off Servo when the i8092\_close() or i8092\_close\_all() is called.

### Return Code:

SUCCESS\_NO\_ERROR: The function returns successfully.

ERROR\_INVALID\_CARD\_ID: There is no active i-8092 module on the given slot, bSlotNum; or the given slot-number is invalid (for instance, slot-number is assigned to 254).

ERROR\_MULTI\_AXES\_ASSIGNED: Multiple axes are assigned to parameter **wAxis**.

ERROR\_NO\_VALID\_AXIS\_ASSIGNED: No valid axis ID is assigned to parameter **wAxis**.

ERROR\_INVALID\_SERVO\_SETTING: Neither SERVO\_ON nor SERVO\_OFF is assigned to parameter **bServoON**.

ERROR\_SERVO\_ON\_SET: Cannot set the Servo output, please call GetLastError() for further system information.

# Home Searching

The Motion ASIC on I-8092 does not provide the automatic-homing feature. For I-8092, the home-searching feature is feasible with the homing-related sensors, Near-Home, Home and Z-Phase. The typical Home Searching is illustrated in Figure 3; and the following-chart is described in Figure 4. Please refer to the 'Home\_Search' sample.

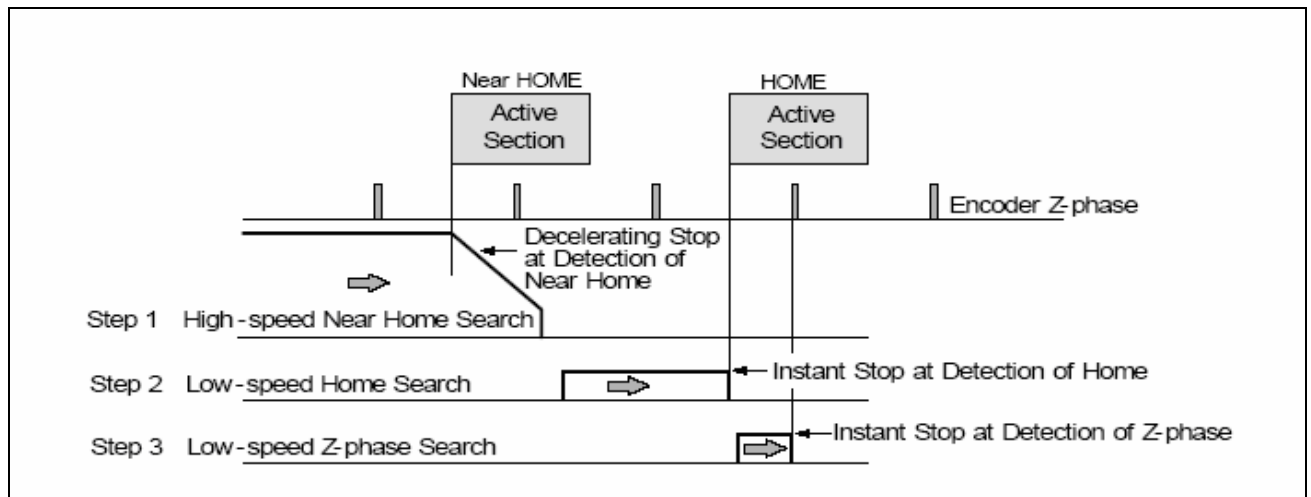


Figure 3 - typical Home-Searching

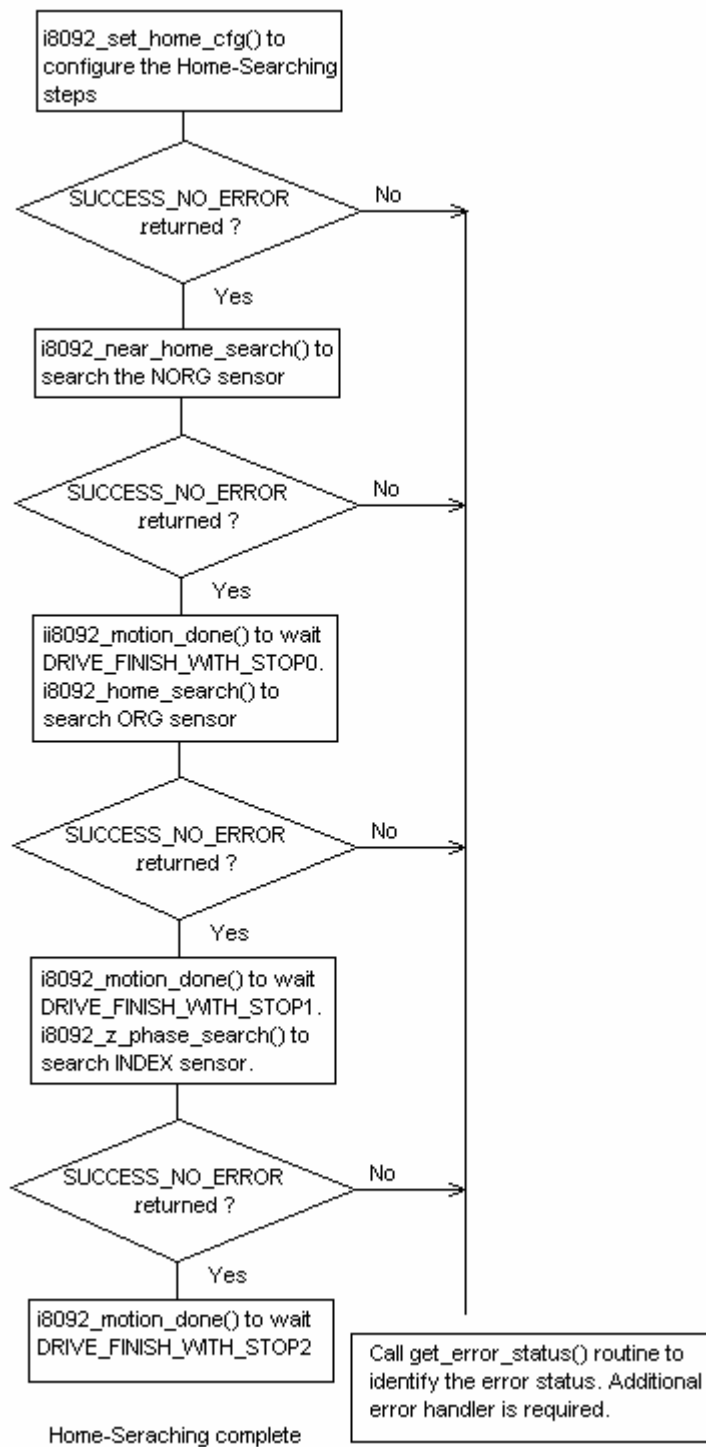


Figure 4 - typical programming following-chart of home-searching



## 3.1 i8092\_set\_home\_cfg

short i8092\_set\_home\_cfg(BYTE bSlotNum, WORD wAxis, WORD wHomeLogic, WORD wNHomeLogic, WORD wIndexLogic, WORD wHomeSteps)

### Description:

This function configures the polarities of Near-Home(NORG), Home(ORG) and Z-Phase/INDEX sensors. The searching-steps of Home-Searching are configured in this function, too.

### Parameters:

bSlotNum: The specific slot number that i-8092 installed on.

wAxis: Can be one of AXIS\_X or AXIS\_Y.

wHomeLogic: HOME\_LOGIC\_ACTIVE\_HIGH or HOME\_LOGIC\_ACTIVE\_LOW.

wNHomeLogic: NHOME\_LOGIC\_ACTIVE\_HIGH or NHOME\_LOGIC\_ACTIVE\_LOW

wIndexLogic: INDEX\_LOGIC\_ACTIVE\_HIGH or INDEX\_LOGIC\_ACTIVE\_LOW

wHomeSteps: The combination of Automatic-Home-Search 4-Steps. The configurations are:

Step-1:

AUTO\_HOME\_STEP1\_FORWARD, AUTO\_HOME\_STEP1\_REVERSE and  
AUTO\_HOME\_STEP1\_DISABLE

Step-2:

AUTO\_HOME\_STEP2\_FORWARD, AUTO\_HOME\_STEP2\_REVERSE and  
AUTO\_HOME\_STEP2\_DISABLE

Step-3:

AUTO\_HOME\_STEP3\_FORWARD, AUTO\_HOME\_STEP3\_REVERSE and  
AUTO\_HOME\_STEP3\_DISABLE

**Notice:** Based on external sensor, It's recommended to include either

AUTO\_HOME\_STEP2\_FORWARD or AUTO\_HOME\_STEP2\_REVERSE in  
wHomeSteps.

### Return Code:

SUCCESS\_NO\_ERROR: The function returns successfully.

ERROR\_INVALID\_CARD\_ID: There is no active i-8092 module on the given slot, bSlotNum; or the given slot-number is invalid (for instance, slot-number is assigned to 254).

ERROR\_MULTI\_AXES\_ASSIGNED: Multiple axes are assigned to parameter **wAxis**.

ERROR\_NO\_VALID\_AXIS\_ASSIGNED: No valid axis ID is assigned to parameter **wAxis**.

ERROR\_INVALID\_HOME\_LOGIC\_LEVEL: Neither HOME\_LOGIC\_ACTIVE\_HIGH nor HOME\_LOGIC\_ACTIVE\_LOW is assigned to parameter **wHomeLogic**.

ERROR\_INVALID\_NEAR\_HOME\_LOGIC\_LEVEL: Neither NHOME\_LOGIC\_ACTIVE\_HIGH nor NHOME\_LOGIC\_ACTIVE\_LOW is assigned to parameter **wNHomeLogic**.

ERROR\_INVALID\_INDEX\_LOGIC\_LEVEL: Neither INDEX\_LOGIC\_ACTIVE\_HIGH nor INDEX\_LOGIC\_ACTIVE\_LOW is assigned to parameter **wIndexLogic**.

ERROR\_INVALID\_AUTO\_HOME\_STEP: The Home-Searching Steps are out of pre-defined configurations.

ERROR\_HOME\_STEP2\_NOT\_CONFIGURE: The Home(ORG) sensor is not applied to Home-Searching Steps.

ERROR\_HOME\_CFG\_SET: Cannot change the configuration of Home-Searching, please call GetLastError() for further system information.

## 3.2 i8092\_near\_home\_search

short i8092\_near\_home\_search(BYTE bSlotNum, WORD wAxis, DWORD dwStartSpeed, DWORD dwAcceleration, DWORD dwDeceleration, DWORD dwNHomeSearchSpeed )

### Description:

This function starts Near-Home Searching with the Start-Speed, Acceleration/Deceleration, Near-Home Searching Speed.

### Parameters:

bSlotNum: The specific slot number that i-8092 installed on.

wAxis: can be one of AXIS\_X or AXIS\_Y.

dwStartSpeed: The Start Speed in Near-Home Searching.

dwAcceleration: The Acceleration in Near-Home Searching.

dwDeceleration: The Deceleration in Near-Home Searching.

dwNHomeSearchSpeed: The Near-Home Search Speed(Driving Speed) in Near-Home Searching.

### Return Code:

SUCCESS\_NO\_ERROR: The function returns successfully.

ERROR\_INVALID\_CARD\_ID: There is no active i-8092 module on the given slot, bSlotNum; or the given slot-number is invalid (for instance, slot-number is assigned to 254).

ERROR\_MULTI\_AXES\_ASSIGNED: Multiple axes are assigned to parameter **wAxis**.

ERROR\_NO\_VALID\_AXIS\_ASSIGNED: No valid axis ID is assigned to parameter **wAxis**.

ERROR\_START\_SPEED\_EXCEED\_DRIVING\_SPEED: The **dwStartSpeed** is larger than **dwNHomeSearchSpeed**.

ERROR\_INVALID\_START\_SPEED: The value assigned to parameter **dwStartSpeed** is out of range of Speed. Please refer to i8092\_set\_range() and i8092\_get\_range\_settings().

ERROR\_INVALID\_DRIVING\_SPEED: The value assigned to parameter **dwNHomeSearchSpeed** is out of range of Speed. Please refer to i8092\_set\_range() and i8092\_get\_range\_settings().

ERROR\_INVALID\_ACCELERATION: The value assigned to parameter **dwAcceleration** is out of range of Acceleration. Please refer to i8092\_set\_range() and i8092\_get\_range\_settings().

ERROR\_INVALID\_DECELERATION: The value assigned to parameter **dwDeceleration** is out of range of Deceleration. Please refer to i8092\_set\_range() and i8092\_get\_range\_settings().

ERROR\_CONFIG\_IS\_NEEDED: The Near-Home Searching had not been configured. Please configure the Home-Searching Step1 in `i8092_set_home_cfg()` first.

ERROR\_OCCURS\_IN\_AXIS\_X, ERROR\_OCCURS\_IN\_AXIS\_Y:

Indicates that some error happens to AXIS\_X or AXIS\_Y. Please call `i8092_get_error_status()` for detailed information.

ERROR\_MOTION\_NOT\_COMPLETE: Indicates the previous motion is not completed. Please wait for completion of motion, or stop motion with `i8092_stop_move()`.

ERROR\_CONFLICT\_WITH\_MPG: Indicates the previous Manual-Pulse-Generator setting is active. Please disable MPG settings with `i8092_set_mpg()`.

ERROR\_NEAR\_HOME\_SEARCH: Cannot start Near-Home Searching, please call `GetLastError()` for further system information.

## 3.3 i8092\_home\_search

short i8092\_home\_search(BYTE bSlotNum, WORD wAxis, DWORD dwHomeSearchSpeed)

### Description:

This function starts Home-Search procedure with the Home Searching Speed.

### Parameters:

bSlotNum: The specific slot number that i-8092 installed on.

wAxis: can be one of AXIS\_X or AXIS\_Y.

dwHomeSearchSpeed: The speed of Home Searching.

### Return Code:

SUCCESS\_NO\_ERROR: The function returns successfully.

ERROR\_INVALID\_CARD\_ID: There is no active i-8092 module on the given slot, bSlotNum; or the given slot-number is invalid (for instance, slot-number is assigned to 254).

ERROR\_MULTI\_AXES\_ASSIGNED: Multiple axes are assigned to parameter **wAxis**.

ERROR\_NO\_VALID\_AXIS\_ASSIGNED: No valid axis ID is assigned to parameter **wAxis**.

ERROR\_INVALID\_HOME\_SEARCH\_SPEED: The value assigned to parameter **dwHomeSearchSpeed** is out of range of Speed. Please refer to i8092\_set\_range() and i8092\_get\_range\_settings().

ERROR\_CONFIG\_IS\_NEEDED: The Home Searching had not been configured. Please configure the Home-Searching Step2 in i8092\_set\_home\_cfg() first.

ERROR\_OCCURS\_IN\_AXIS\_X, ERROR\_OCCURS\_IN\_AXIS\_Y:

Indicates that some error happens to AXIS\_X or AXIS\_Y. Please call i8092\_get\_error\_status() for detailed information.

ERROR\_MOTION\_NOT\_COMPLETE: Indicates the previous motion is not completed. Please wait for completion of motion, or stop motion with i8092\_stop\_move().

ERROR\_CONFLICT\_WITH\_MPG: Indicates the previous Manual-Pulse-Generator setting is active. Please disable MPG settings with i8092\_set\_mpg().

ERROR\_HOME\_SEARCH: Cannot start Home Searching, please call GetLastError() for further system information.

## 3.4 i8092\_z\_phase\_search

short i8092\_z\_phase\_search(BYTE bSlotNum, WORD wAxis, DWORD dwZPhaseSearchSpeed)

### Description:

This function starts Home-Search procedure with the Home Searching Speed.

### Parameters:

bSlotNum: The specific slot number that i-8092 installed on.

wAxis: can be one of AXIS\_X or AXIS\_Y.

dwZPhaseSearchSpeed: The speed of Z-Phase Searching.

### Return Code:

SUCCESS\_NO\_ERROR: The function returns successfully.

ERROR\_INVALID\_CARD\_ID: There is no active i-8092 module on the given slot, bSlotNum; or the given slot-number is invalid (for instance, slot-number is assigned to 254).

ERROR\_MULTI\_AXES\_ASSIGNED: Multiple axes are assigned to parameter **wAxis**.

ERROR\_NO\_VALID\_AXIS\_ASSIGNED: No valid axis ID is assigned to parameter **wAxis**.

ERROR\_INVALID\_HOME\_SEARCH\_SPEED: The value assigned to parameter **dwZPhaseSearchSpeed** is out of range of Speed. Please refer to i8092\_set\_range() and i8092\_get\_range\_settings().

ERROR\_CONFIG\_IS\_NEEDED: The Home Searching had not been configured. Please configure the Home-Searching Step3 in i8092\_set\_home\_cfg() first.

ERROR\_OCCURS\_IN\_AXIS\_X, ERROR\_OCCURS\_IN\_AXIS\_Y:  
Indicates that some error happens to AXIS\_X or AXIS\_Y. Please call i8092\_get\_error\_status() for detailed information.

ERROR\_MOTION\_NOT\_COMPLETE: Indicates the previous motion is not completed. Please wait for completion of motion, or stop motion with i8092\_stop\_move().

ERROR\_CONFLICT\_WITH\_MPG: Indicates the previous Manual-Pulse-Generator setting is active. Please disable MPG settings with i8092\_set\_mpg().

ERROR\_Z\_PHASE\_SEARCH: Cannot start Home Searching, please call GetLastError() for further system information.

# Independent Moving Functions

These functions in this chapter start the independent motion, including velocity-move, constant-speed move, trapezoidal-profile and S-curve move.

## 4.1 i8092\_velocity\_move

short i8092\_velocity\_move(BYTE bSlotNum, WORD wAxis, DWORD dwStartSpeed, DWORD dwDriveSpeed, DWORD dwAcceleration, BYTE bDirection)

### Description:

This function starts velocity-move with **dwDriveSpeed** driving-speed continuously. The trapezoidal-profile moving will be applied to Acceleration. Calling i8092\_stop\_move() to terminate the velocity-move.

### Parameters:

bSlotNum: The specific slot number that i-8092 installed on.

wAxis: Can be one of AXIS\_X or AXIS\_Y.

dwStartSpeed: The Start-Speed in trapezoidal-profile move.

dwDriveSpeed: The Drive-Speed in trapezoidal-profile move.

dwAcceleration: The Acceleration in trapezoidal-profile move.

bDirection: MOVE\_DIRECTION\_FORWARD or MOVE\_DIRECTION\_REVERSE.

### Return Code:

SUCCESS\_NO\_ERROR: The function returns successfully.

ERROR\_INVALID\_CARD\_ID: There is no active i-8092 module on the given slot, bSlotNum; or the given slot-number is invalid (for instance, slot-number is assigned to 254).

ERROR\_MULTI\_AXES\_ASSIGNED: Multiple axes are assigned to parameter **wAxis**.

ERROR\_NO\_VALID\_AXIS\_ASSIGNED: No valid axis ID is assigned to parameter **wAxis**.

ERROR\_INVALID\_MOVE\_DIRECTION: Neither MOVE\_DIRECTION\_FORWARD nor MOVE\_DIRECTION\_REVERSE is assigned to parameter **bDirection**.

ERROR\_START\_SPEED\_EXCEED\_DRIVING\_SPEED: The **dwStartSpeed** is larger than **dwDriveSpeed**.

ERROR\_INVALID\_START\_SPEED: The value assigned to parameter **dwStartSpeed** is out of range of Speed. Please refer to i8092\_set\_range() and i8092\_get\_range\_settings().

ERROR\_INVALID\_DRIVING\_SPEED: The value assigned to parameter **dwDriveSpeed** is out of range of Speed. Please refer to i8092\_set\_range() and i8092\_get\_range\_settings().

ERROR\_INVALID\_ACCELERATION: The value assigned to parameter **dwAcceleration** is out of range of Acceleration. Please refer to i8092\_set\_range() and i8092\_get\_range\_settings().

ERROR\_OCCURS\_IN\_AXIS\_X, ERROR\_OCCURS\_IN\_AXIS\_Y:  
Indicates that some error happens to AXIS\_X or AXIS\_Y. Please call i8092\_get\_error\_status() for detailed information.

ERROR\_MOTION\_NOT\_COMPLETE: Indicates the previous motion is not completed.

ERROR\_CONFLICT\_WITH\_MPG: Indicates the previous Manual-Pulse-Generator setting is active. Please disable MPG settings with i8092\_set\_mpg().

ERROR\_CONTI\_MOVE\_START: Cannot start velocity-move, please call GetLastError() for further system information.



## 4.2 i8092\_const\_move

short i8092\_const\_move(BYTE bSlotNum, WORD wAxis, DWORD dwDriveSpeed, long FixedPulse)

### Description:

This function starts constant-speed, fixed-pulse motion. No acceleration/deceleration is applied in this motion.

### Parameters:

bSlotNum: The specific slot number that i-8092 installed on.

wAxis: Can be one of AXIS\_X or AXIS\_Y.

dwDriveSpeed: The Drive-Speed in constant-speed moving.

FixedPulse: The total numbers of output pulse. This parameter is a signed 32-bits variable, the negative value indicates motion in reverse-direction

### Return Code:

SUCCESS\_NO\_ERROR: The function returns successfully.

ERROR\_INVALID\_CARD\_ID: There is no active i-8092 module on the given slot, bSlotNum; or the given slot-number is invalid (for instance, slot-number is assigned to 254).

ERROR\_MULTI\_AXES\_ASSIGNED: Multiple axes are assigned to parameter **wAxis**.

ERROR\_NO\_VALID\_AXIS\_ASSIGNED: No valid axis ID is assigned to parameter **wAxis**.

ERROR\_INVALID\_DRIVING\_SPEED: The value assigned to parameter **dwDriveSpeed** is out of range of Speed. Please refer to i8092\_set\_range() and i8092\_get\_range\_settings().

ERROR\_OCCURS\_IN\_AXIS\_X, ERROR\_OCCURS\_IN\_AXIS\_Y:

Indicates that some error happens to AXIS\_X or AXIS\_Y. Please call i8092\_get\_error\_status() for detailed information.

ERROR\_MOTION\_NOT\_COMPLETE: Indicates the previous motion is not completed.

ERROR\_CONFLICT\_WITH\_MPG: Indicates the previous Manual-Pulse-Generator setting is active. Please disable MPG settings with i8092\_set\_mpg().

ERROR\_CONST\_MOVE\_START: Cannot start constant-speed motion, please call GetLastError() for further system information.

## 4.3 i8092\_const\_moveall

short i8092\_const\_moveall(BYTE bSlotNum, WORD wAxis, DWORD dwDriveSpeed[], long FixedPulse[])

### Description:

This function starts multiple axes the constant-speed, fixed-pulse moving simultaneously. No acceleration/deceleration is applied in this motion.

### Parameters:

bSlotNum: The specific slot number that i-8092 installed on.

wAxes: Can be any combination of AXIS\_X or AXIS\_Y.

dwDriveSpeed[]: The pointer to the **DWORD**-Array that contains Driving-Speed of multiple axes. Different speed can be assigned to each axis.

FixedPulse[]: The pointer to the **long**-Array that contains Fixed-Pulse of multiple axes. Different pulse number can be assigned to each axis. The element of this **long**-Array is a signed 32-bits variable, the negative value indicates motion in reverse-direction

### Return Code:

SUCCESS\_NO\_ERROR: The function returns successfully.

ERROR\_INVALID\_CARD\_ID: There is no active i-8092 module on the given slot, bSlotNum; or the given slot-number is invalid (for instance, slot-number is assigned to 254).

ERROR\_NO\_VALID\_AXIS\_ASSIGNED: No valid axis ID is assigned to parameter **wAxis**.

ERROR\_INVALID\_DRIVING\_SPEED: The value assigned to some elements of **dwDriveSpeed[]** are out of range of Speed. Please refer to i8092\_set\_range() and i8092\_get\_range\_settings().

ERROR\_ACCESS\_VIOLATION\_DATA\_COPY: Some system exception occurs while copying memory, please check the pointer-type parameter you assign to this function.

ERROR\_OCCURS\_IN\_AXIS\_X, ERROR\_OCCURS\_IN\_AXIS\_Y, ERROR\_OCCURS\_IN\_AXIS\_XY: Indicates that some error happens to AXIS\_xxxx. Please call i8092\_get\_error\_status() for detailed information.

ERROR\_MOTION\_NOT\_COMPLETE: Indicates the previous motion is not completed.

ERROR\_CONFLICT\_WITH\_MPG: Indicates the previous Manual-Pulse-Generator setting is active. Please disable MPG settings with i8092\_set\_mpg().

ERROR\_AXES\_MOVE\_CHECK: Cannot forward the Axes-checking command to system, please call GetLastError() for further system information.

ERROR\_CONST\_MOVE\_START: Cannot start constant-speed motion, please call GetLastError() for further system information.

## 4.4 i8092\_t\_move

short i8092\_t\_move(BYTE bSlotNum, WORD wAxis, DWORD dwStartSpeed, DWORD dwDriveSpeed, DWORD dwAcceleration, DWORD dwDeceleration, long FixedPulse, short wAccCntOffset = 8)

### Description:

This function starts trapezoidal-profile, fixed-pulse motion.

### Parameters:

bSlotNum: The specific slot number that i-8092 installed on.

wAxis: can be one of AXIS\_X or AXIS\_Y.

dwStartSpeed: The Start-Speed in trapezoidal-profile moving.

dwDriveSpeed: The Drive-Speed in trapezoidal-profile moving.

dwAcceleration: The Acceleration in trapezoidal-profile moving.

dwDeceleration: The Deceleration in trapezoidal-profile moving.

FixedPulse: The total numbers of output pulse. This parameter is a signed 32-bits variable, the negative value indicates motion in reverse-direction

wAccCntOffset: This optional parameter to configure the offset for Acceleration/Deceleration driving. The default setting of **wAccCntOffset** is 8.

### Return Code:

SUCCESS\_NO\_ERROR: The function returns successfully.

ERROR\_INVALID\_CARD\_ID: There is no active i-8092 module on the given slot, bSlotNum; or the given slot-number is invalid (for instance, slot-number is assigned to 254).

ERROR\_MULTI\_AXES\_ASSIGNED: Multiple axes are assigned to parameter **wAxis**.

ERROR\_NO\_VALID\_AXIS\_ASSIGNED: No valid axis ID is assigned to parameter **wAxis**.

ERROR\_START\_SPEED\_EXCEED\_DRIVING\_SPEED: The **dwStartSpeed** is larger than **dwDriveSpeed**.

ERROR\_INVALID\_START\_SPEED: The value assigned to parameter **dwStartSpeed** is out of range of Speed. Please refer to i8092\_set\_range() and i8092\_get\_range\_settings().

ERROR\_INVALID\_DRIVING\_SPEED: The value assigned to parameter **dwDriveSpeed** is out of range of Speed. Please refer to i8092\_set\_range() and i8092\_get\_range\_settings().

ERROR\_INVALID\_ACCELERATION: The value assigned to parameter **dwAcceleration** is out of range of Acceleration. Please refer to i8092\_set\_range() and i8092\_get\_range\_settings().

ERROR\_INVALID\_DECELERATION: The value assigned to parameter ***dwDeceleration*** is out of range of Deceleration. Please refer to `i8092_set_range()` and `i8092_get_range_settings()`.

**Notice:** In the case, ***dwAcceleration*** > ***dwDeceleration*** , the following formula should be satisfied, too.

$$\mathbf{dwDeceleration} > (\mathbf{dwAcceleration} \times \mathbf{dwDriveSpeed}) / 4,000,000.$$

ERROR\_OCCURS\_IN\_AXIS\_X, ERROR\_OCCURS\_IN\_AXIS\_Y:

Indicates that some error happens to AXIS\_X or AXIS\_Y. Please call `i8092_get_error_status()` for detailed information.

ERROR\_MOTION\_NOT\_COMPLETE: Indicates the previous motion is not completed.

ERROR\_CONFLICT\_WITH\_MPG: Indicates the previous Manual-Pulse-Generator setting is active. Please disable MPG settings with `i8092_set_mpg()`.

ERROR\_T\_MOVE\_START: Cannot start trapezoidal moving, please call `GetLastError()` for further system information.

## 4.5 i8092\_t\_moveall

short i8092\_t\_moveall(BYTE bSlotNum, WORD wAxes, DWORD dwStartSpeed[], DWORD dwDriveSpeed[], DWORD dwAcceleration[], DWORD dwDeceleration[], long FixedPulse[], short wAccCntOffset[] = NULL)

### Description:

This function starts multiple axes the trapezoidal-profile, fixed-pulse moving simultaneously.

### Parameters:

bSlotNum: The specific slot number that i-8092 installed on.

wAxes: can be any combination of AXIS\_X or AXIS\_Y.

dwStartSpeed[]: The pointer to the **DWORD**-Array that contains Start-Speed of multiple axes.

Different value can be assigned to each axis.

dwDriveSpeed[]: The pointer to the **DWORD**-Array that contains Driving-Speed of multiple axes.

Different value can be assigned to each axis.

dwAcceleration[]: The pointer to the **DWORD**-Array that contains Acceleration of multiple axes.

Different value can be assigned to each axis.

dwDeceleration[]: The pointer to the **DWORD**-Array that contains Deceleration of multiple axes.

Different value can be assigned to each axis.

FixedPulse[]: The pointer to the **long**-Array that contains Fixed-Pulse of multiple axes. Different pulse number can be assigned to each axis. The element of this parameter is a signed 32-bits variable, the negative value indicates motion in reverse-direction

wAccCntOffset[]: This optional pointer to the **short**-Array that contains offset of multiple axes. The default setting of **wAccCntOffset[]** is NULL.

### Return Code:

SUCCESS\_NO\_ERROR: The function returns successfully.

ERROR\_INVALID\_CARD\_ID: There is no active i-8092 module on the given slot, bSlotNum; or the given slot-number is invalid (for instance, slot-number is assigned to 254).

ERROR\_NO\_VALID\_AXIS\_ASSIGNED: No valid axis ID is assigned to parameter **wAxis**.

ERROR\_START\_SPEED\_EXCEED\_DRIVING\_SPEED: Some elements in **dwStartSpeed[]** are larger than relative element of **dwDriveSpeed[]**.

ERROR\_INVALID\_START\_SPEED: The value assigned to some elements of **dwStartSpeed[]** are out of range of Speed. Please refer to i8092\_set\_range() and i8092\_get\_range\_settings().

ERROR\_INVALID\_DRIVING\_SPEED: The value assigned to some elements of ***dwDriveSpeed[]*** are out of range of Speed. Please refer to `i8092_set_range()` and `i8092_get_range_settings()`.

ERROR\_INVALID\_ACCELERATION: The value assigned to some elements of ***dwAcceleration[]*** are out of range of Acceleration. Please refer to `i8092_set_range()` and `i8092_get_range_settings()`.

ERROR\_INVALID\_DECELERATION: The value assigned to some elements of ***dwDeceleration[]*** are out of range of Deceleration. Please refer to `i8092_set_range()` and `i8092_get_range_settings()`.

**Notice:** In the case, ***dwAcceleration > dwDeceleration*** , the following formula should be satisfied, too.

$$\mathbf{dwDeceleration > (dwAcceleration \times dwDriveSpeed) / 4,000,000.}$$

ERROR\_ACCESS\_VIOLATION\_DATA\_COPY: Some system exception occurs while copying memory, please check the pointer-type parameter you assign to this function.

ERROR\_OCCURS\_IN\_AXIS\_X, ERROR\_OCCURS\_IN\_AXIS\_Y, ERROR\_OCCURS\_IN\_AXIS\_XY:  
Indicates that some error happens to AXIS\_xxxx. Please call `i8092_get_error_status()` for detailed information.

ERROR\_MOTION\_NOT\_COMPLETE: Indicates the previous motion is not completed.

ERROR\_CONFLICT\_WITH\_MPG: Indicates the previous Manual-Pulse-Generator setting is active.  
Please disable MPG settings with `i8092_set_mpg()`.

ERROR\_AXES\_MOVE\_CHECK: Cannot forward the Axes-checking command to system, please call `GetLastError()` for further system information.

ERROR\_T\_MOVE\_START: Cannot start trapezoidal moving, please call `GetLastError()` for further system information.

## 4.6 i8092\_s\_move

short i8092\_t\_move(BYTE bSlotNum, WORD wAxis, DWORD dwStartSpeed, DWORD dwDriveSpeed, DWORD dwAccelerationRate, DWORD dwDecelerationRate, long FixedPulse, short wAccCntOffset = 8)

### Description:

This function starts S-curve, fixed-pulse motion. Only symmetric S-Curve motion is provided by i-8092.

### Parameters:

bSlotNum: The specific slot number that i-8092 installed on.

wAxis: Can be one of AXIS\_X or AXIS\_Y.

dwStartSpeed: The Start-Speed in S-curve moving.

dwDriveSpeed: The Drive-Speed in S-curve moving.

dwAccelerationRate: The Acceleration-Increasing-Rate in S-curve moving. The Acceleration will be assigned to maximum value automatically.

dwDecelerationRate: This parameter is reserved and will be ignored.

FixedPulse: This parameter is a signed 32-bits variable, the negative value indicates motion in reverse-direction

wAccCntOffset: This optional parameter to configure the offset for Acceleration/Deceleration driving. The default setting of **wAccCntOffset** is 8.

### Return Code:

SUCCESS\_NO\_ERROR: The function returns successfully.

ERROR\_INVALID\_CARD\_ID: There is no active i-8092 module on the given slot, bSlotNum; or the given slot-number is invalid (for instance, slot-number is assigned to 254).

ERROR\_MULTI\_AXES\_ASSIGNED: Multiple axes are assigned to parameter **wAxis**.

ERROR\_NO\_VALID\_AXIS\_ASSIGNED: No valid axis ID is assigned to parameter **wAxis**.

ERROR\_START\_SPEED\_EXCEED\_DRIVING\_SPEED: The **dwStartSpeed** is larger than or equal to **dwDriveSpeed**.

ERROR\_INVALID\_START\_SPEED: The value assigned to parameter **dwStartSpeed** is out of range of Speed. Please refer to i8092\_set\_range() and i8092\_get\_range\_settings().

ERROR\_INVALID\_DRIVING\_SPEED: The value assigned to parameter **dwDriveSpeed** is out of range of Speed. Please refer to i8092\_set\_range() and i8092\_get\_range\_settings().



ERROR\_INVALID\_JERK: The value assigned to parameter ***dwAccelerationRate*** is out of range of Acceleration-Increasing-Rate. Please refer to `i8092_set_range()` and `i8092_get_range_settings()`.

ERROR\_OCCURS\_IN\_AXIS\_X, ERROR\_OCCURS\_IN\_AXIS\_Y:  
Indicates that some error happens to AXIS\_X or AXIS\_Y. Please call `i8092_get_error_status()` for detailed information.

ERROR\_MOTION\_NOT\_COMPLETE: Indicates the previous motion is not completed.

ERROR\_CONFLICT\_WITH\_MPG: Indicates the previous Manual-Pulse-Generator setting is active. Please disable MPG settings with `i8092_set_mpg()`.

ERROR\_S\_MOVE\_START: Cannot start S-curve moving, please call `GetLastError()` for further system information.

## 4.7 i8092\_s\_moveall

short i8092\_s\_moveall(BYTE bSlotNum, WORD wAxes, DWORD dwStartSpeed[], DWORD dwDriveSpeed[], DWORD dwAccelerationRate[], DWORD dwDecelerationRate[], long FixedPulse[], short wAccCntOffset[] = NULL)

### Description:

This function starts multiple axes the S-curve, fixed-pulse moving simultaneously.

### Parameters:

bSlotNum: The specific slot number that i-8092 installed on.

wAxes: Can be any combination of AXIS\_X or AXIS\_Y.

dwStartSpeed[]: The pointer to the **DWORD**-Array that contains Start-Speed of multiple axes.

Different value can be assigned to each axis.

dwDriveSpeed[]: The pointer to the **DWORD**-Array that contains Driving-Speed of multiple axes.

Different value can be assigned to each axis.

dwAccelerationRate[]: The pointer to the **DWORD**-Array that contains Acceleration-Increasing-Rate of multiple axes. Different value can be assigned to each axis.

dwDecelerationRate[]: This Deceleration-Increasing-Rate array is reserved and will be ignored.

FixedPulse[]: The pointer to the **long**-Array that contains Fixed-Pulse of multiple axes. Different pulse number can be assigned to each axis. The element of this parameter is a signed 32-bits variable, the negative value indicates motion in reverse-direction

wAccCntOffset[]: This optional pointer to the **short**-Array that contains offset of multiple axes. The default setting of **wAccCntOffset[]** is NULL.

### Return Code:

SUCCESS\_NO\_ERROR: The function returns successfully.

ERROR\_INVALID\_CARD\_ID: There is no active i-8092 module on the given slot, bSlotNum; or the given slot-number is invalid (for instance, slot-number is assigned to 254).

ERROR\_NO\_VALID\_AXIS\_ASSIGNED: No valid axis ID is assigned to parameter **wAxis**.

ERROR\_START\_SPEED\_EXCEED\_DRIVING\_SPEED: Some elements in **dwStartSpeed[]** are larger than relative element of **dwDriveSpeed[]**.

ERROR\_INVALID\_START\_SPEED: The value assigned to some elements of **dwStartSpeed[]** are out of range of Speed. Please refer to i8092\_set\_range() and i8092\_get\_range\_settings().

ERROR\_INVALID\_DRIVING\_SPEED: The value assigned to some elements of ***dwDriveSpeed[]*** are out of range of Speed. Please refer to `i8092_set_range()` and `i8092_get_range_settings()`.

ERROR\_INVALID\_JERK: The value assigned to some elements of ***dwAccelerationRate[]*** are out of range of Acceleration-Increasing-Rate. Please refer to `i8092_set_range()` and `i8092_get_range_settings()`.

ERROR\_ACCESS\_VIOLATION\_DATA\_COPY: Some system exception occurs while copying memory, please check the pointer-type parameter you assign to this function.

ERROR\_OCCURS\_IN\_AXIS\_X, ERROR\_OCCURS\_IN\_AXIS\_Y, ERROR\_OCCURS\_IN\_AXIS\_XY,: Indicates that some error happens to AXIS\_xxxx. Please call `i8092_get_error_status()` for detailed information.

ERROR\_MOTION\_NOT\_COMPLETE: Indicates the previous motion is not completed.

ERROR\_CONFLICT\_WITH\_MPG: Indicates the previous Manual-Pulse-Generator setting is active. Please disable MPG settings with `i8092_set_mpg()`.

ERROR\_AXES\_MOVE\_CHECK: Cannot forward the Axes-checking command to system, please call `GetLastError()` for further system information.

ERROR\_S\_MOVE\_START: Cannot start S-curve moving, please call `GetLastError()` for further system information.

# Interpolation Moving Functions

## 5.1 Individual Interpolation Moving

The functions in this chapter provide both trapezoidal and S-curve acceleration/deceleration in 2D linear interpolation moving. And only trapezoidal acceleration/deceleration can be applied to circular interpolation moving.

### 5.1.1 i8092\_t\_line2\_move

```
short i8092_t_line2_move(BYTE bSlotNum, WORD wMainAxis, WORD wSlaveAxis, DWORD  
dwStartSpeed, DWORD dwDriveSpeed, DWORD dwAcceleration, DWORD dwDeceleration, long  
MainAxisFinishPoint, long SlaveAxisFinishPoint, short wAccCntOffset = 8, WORD wBlockMode =  
DISABLE_BLOCK_OPEARTION)
```

**Description:**

This function starts the trapezoidal-profile, 2-dimension linear interpolation moving.

**Parameters:**

bSlotNum: The specific slot number that i-8092 installed on.

wMainAxis: The main-axis of Interpolation moving. For i-8092, only AXIS\_X is valid.

wSlaveAxis: The slave-axis of Interpolation moving. For i-8092, only AXIS\_Y is valid.

dwStartSpeed: The Start-Speed in trapezoidal-profile moving. This Start-Speed will be applied to  
main-axis.

dwDriveSpeed: The Drive-Speed in trapezoidal-profile moving. This Drive-Speed will be applied to  
main-axis.

dwAcceleration: The Acceleration in trapezoidal-profile moving. This Acceleration will be applied to  
main-axis.

dwDeceleration: The Deceleration in trapezoidal-profile moving. This Deceleration will be applied to  
main-axis.

**MainAxisFinishPoint:** The finish point of main-axis. This parameter is the relative offset to the current position. And the negative value indicates that the finish point is in reverse-direction.

**SlaveAxisFinishPoint:** The finish point of slave-axis. This parameter is the relative offset to the current position. And the negative value indicates that the finish point is in reverse-direction.

**wAccCntOffset:** This optional parameter to configure the offset for Acceleration/Deceleration driving. The default setting of **wAccCntOffset** is 8.

**wBlockMode:** The Block/Non-Block operation mode. Now only DISABLE\_BLOCK\_OPEARTION is valid.

#### **Return Code:**

**SUCCESS\_NO\_ERROR:** The function returns successfully.

**ERROR\_INVALID\_CARD\_ID:** There is no active i-8092 module on the given slot, bSlotNum; or the given slot-number is invalid (for instance, slot-number is assigned to 254).

**ERROR\_MULTI\_AXES\_ASSIGNED:** Multiple axes are assigned to parameter **wMainAxis** or **wSlaveAxis**.

**ERROR\_NO\_VALID\_AXIS\_ASSIGNED:** No valid axis ID is assigned to parameter **wMainAxis** or **wSlaveAxis**.

**ERROR\_INVALID\_INTERPOLATION\_SLAVE\_AXES:** The parameter **wSlaveAxis** includes the axis ID assigned to **wMainAxis**.

**ERROR\_INVALID\_BLOCK\_OPEARTION\_MODE:** Not DISABLE\_BLOCK\_OPEARTION is assigned to parameter **wBlockMode**.

**ERROR\_START\_SPEED\_EXCEED\_DRIVING\_SPEED:** The **dwStartSpeed** is larger than **dwDriveSpeed**.

**ERROR\_INVALID\_START\_SPEED:** The value assigned to parameter **dwStartSpeed** is out of range of Speed. Please refer to i8092\_set\_range() and i8092\_get\_range\_settings().

**ERROR\_INVALID\_DRIVING\_SPEED:** The value assigned to parameter **dwDriveSpeed** is out of range of Speed. Please refer to i8092\_set\_range() and i8092\_get\_range\_settings().

**ERROR\_INVALID\_ACCELERATION:** The value assigned to parameter **dwAcceleration** is out of range of Acceleration. Please refer to i8092\_set\_range() and i8092\_get\_range\_settings().

**ERROR\_INVALID\_DECELERATION:** The value assigned to parameter **dwDeceleration** is out of range of Deceleration. Please refer to i8092\_set\_range() and i8092\_get\_range\_settings().

**Notice:** In the case, **dwAcceleration > dwDeceleration** , the following formula should be satisfied, too.

$$\mathbf{dwDeceleration > (dwAcceleration \times dwDriveSpeed) / 4,000,000.}$$

ERROR\_INTERPOLATION\_NOT\_COMPLETE: The interpolation moving started before had not completed.

ERROR\_OCCURS\_IN\_AXIS\_X, ERROR\_OCCURS\_IN\_AXIS\_Y, ERROR\_OCCURS\_IN\_AXIS\_XY:  
Indicates that some error happens to AXIS\_xxxx. Please call i8092\_get\_error\_status() for detailed information.

ERROR\_CONFLICT\_WITH\_MPG: Indicates the previous Manual-Pulse-Generator setting is active. Please disable MPG settings with i8092\_set\_mpg().

ERROR\_MOTION\_NOT\_COMPLETE: Indicates the previous motion is not completed.

ERROR\_AXES\_MOVE\_CHECK: Cannot forward the Axes-checking command to system, please call GetLastError() for further system information.

ERROR\_T\_LINE2\_START: Cannot start trapezoidal 2D interpolation moving, please call GetLastError() for further system information.

## 5.1.2 i8092\_s\_line2\_move

short i8092\_s\_line2\_move(BYTE bSlotNum, WORD wMainAxis, WORD wSlaveAxis, DWORD dwStartSpeed, DWORD dwDriveSpeed, DWORD dwAccelerationRate, DWORD dwDecelerationRate, long MainAxisFinishPoint, long SlaveAxisFinishPoint, short wAccCntOffset = 8, WORD wBlockMode = DISABLE\_BLOCK\_OPEARTION)

### Description:

This function starts the S-curve, 2-dimension linear interpolation moving.

### Parameters:

bSlotNum: The specific slot number that i-8092 installed on.

wMainAxis: The main-axis of Interpolation moving. For i-8092, only AXIS\_X is valid.

wSlaveAxis: The slave-axis of Interpolation moving. For i-8092, only AXIS\_Y is valid.

dwStartSpeed: The Start-Speed in S-curve moving. This Start-Speed will be applied to main-axis.

dwDriveSpeed: The Drive-Speed in S-curve moving. This Drive-Speed will be applied to main-axis.

dwAccelerationRate: The Acceleration-Increasing-Rate in S-curve moving. The Acceleration will be assigned to maximum value automatically. This Acceleration-Increasing-Rate will be applied to main-axis.

dwDecelerationRate: This parameter is reserved and will be ignored..

MainAxisFinishPoint: The finish point of main-axis. This parameter is the relative offset to the current position. And the negative value indicates that the finish point is in reverse-direction.

SlaveAxisFinishPoint: The finish point of slave-axis. This parameter is the relative offset to the current position. And the negative value indicates that the finish point is in reverse-direction

wAccCntOffset: This optional parameter to configure the offset for Acceleration/Deceleration driving. The default setting of **wAccCntOffset** is 8.

wBlockMode: The Block/Non-Block operation mode. Now only DISABLE\_BLOCK\_OPEARTION is valid.

### Return Code:

SUCCESS\_NO\_ERROR: The function returns successfully.

ERROR\_INVALID\_CARD\_ID: There is no active i-8092 module on the given slot, bSlotNum; or the given slot-number is invalid (for instance, slot-number is assigned to 254).

ERROR\_MULTI\_AXES\_ASSIGNED: Multiple axes are assigned to parameter **wMainAxis** or **wSlaveAxis**.

ERROR\_NO\_VALID\_AXIS\_ASSIGNED: No valid axis ID is assigned to parameter **wMainAxis** or **wSlaveAxis**.

ERROR\_INVALID\_INTERPOLATION\_SLAVE\_AXES: The parameter **wSlaveAxis** includes the axis ID assigned to **wMainAxis**.

ERROR\_INVALID\_BLOCK\_OPEARTION\_MODE: Not DISABLE\_BLOCK\_OPEARTION is assigned to parameter **wBlockMode**.

ERROR\_START\_SPEED\_EXCEED\_DRIVING\_SPEED: The **dwStartSpeed** is larger than or equal to **dwDriveSpeed**.

ERROR\_INVALID\_START\_SPEED: The value assigned to parameter **dwStartSpeed** is out of range of Speed. Please refer to i8092\_set\_range() and i8092\_get\_range\_settings().

ERROR\_INVALID\_DRIVING\_SPEED: The value assigned to parameter **dwDriveSpeed** is out of range of Speed. Please refer to i8092\_set\_range() and i8092\_get\_range\_settings().

ERROR\_INVALID\_JERK: The value assigned to parameter **dwAccelerationRate** is out of range of Acceleration Increasing Rate. Please refer to i8092\_set\_range() and i8092\_get\_range\_settings().

ERROR\_INTERPOLATION\_NOT\_COMPLETE: The interpolation moving started before had not completed.

ERROR\_OCCURS\_IN\_AXIS\_X, ERROR\_OCCURS\_IN\_AXIS\_Y, ERROR\_OCCURS\_IN\_AXIS\_XY: Indicates that some error happens to AXIS\_xxxx. Please call i8092\_get\_error\_status() for detailed information.

ERROR\_MOTION\_NOT\_COMPLETE: Indicates the previous motion is not completed.

ERROR\_CONFLICT\_WITH\_MPG: Indicates the previous Manual-Pulse-Generator setting is active. Please disable MPG settings with i8092\_set\_mpg().

ERROR\_AXES\_MOVE\_CHECK: Cannot forward the Axes-checking command to system, please call GetLastError() for further system information.

ERROR\_S\_LINE2\_START: Cannot start S-curve 2D interpolation moving, please call GetLastError() for further system information.



### 5.1.3 i8092\_t\_arc2\_move

short i8092\_t\_arc2\_move(BYTE bSlotNum, WORD wMainAxis, WORD wSlaveAxis, DWORD dwStartSpeed, DWORD dwDriveSpeed, DWORD dwAcceleration, WORD wArcDirection, long MainAxisCenterPoint, long SlaveAxisCenterPoint, long MainAxisFinishPoint, long SlaveAxisFinishPoint, short wAccCntOffset = 8, WORD wBlockMode = DISABLE\_BLOCK\_OPEARTION)

#### Description:

This function starts the trapezoidal-profile, 2-dimension circular interpolation moving. Only symmetric trapezoidal Acceleration/Deceleration is applied to circular interpolation. The start-point will be the *Origin* of circular-interpolation motion. The **MainAxisCenterPoint** & **SlaveAxisCenterPoint** are center coordinates related to *Origin*; and **MainAxisFinishPoint** & **SlaveAxisFinishPoint** are finish coordinates related to *Origin*. The position tolerance for the specified circular curve is  $\pm 1$  within the interpolation range. When the value of finish-point reaches the coordinate of *short-axis*, the circular interpolation will be completed. Figure 5 illustrates the finish-point checking of circular interpolation.

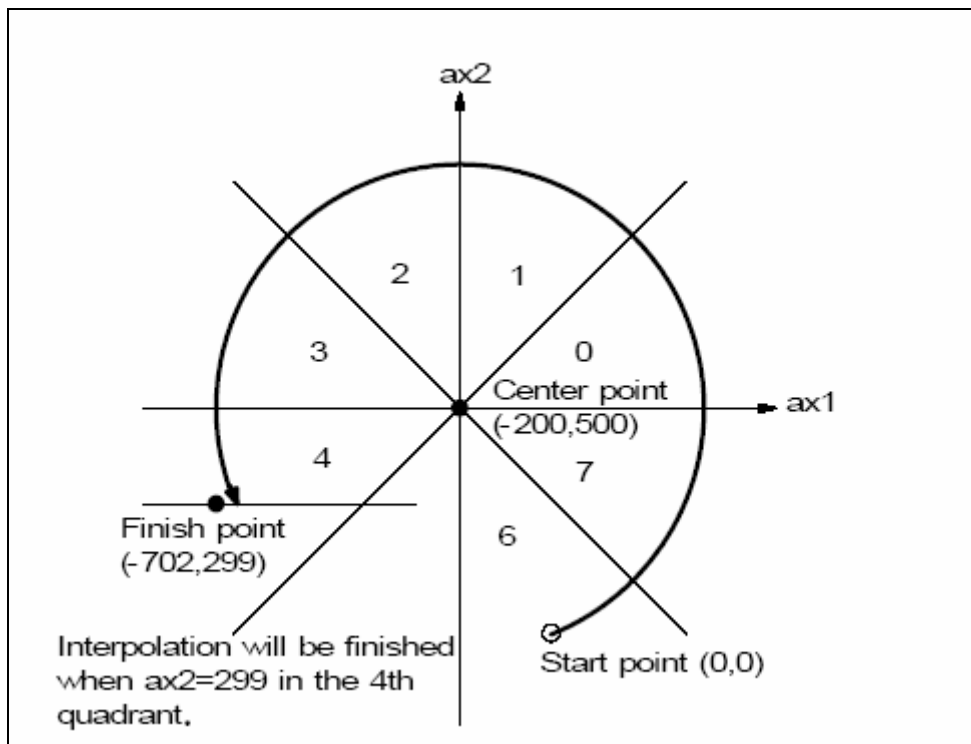


Figure 5 – finish-point checking of circular interpolation

#### Parameters:

bSlotNum: The specific slot number that i-8092 installed on.

wMainAxis: The main-axis of Interpolation moving. For i-8092, only AXIS\_X is valid.

**wSlaveAxis:** The slave-axis of Interpolation moving. For i-8092, only AXIS\_Y is valid.

**dwStartSpeed:** The Start-Speed in trapezoidal-profile moving. This Start-Speed will be applied to main-axis.

**dwDriveSpeed:** The Drive-Speed in trapezoidal-profile moving. This Drive-Speed will be applied to main-axis.

**dwAcceleration:** The Acceleration in trapezoidal-profile moving. This Acceleration will be applied to main-axis.

**wArcDirection:** Clockwise (INTERP\_ARC\_DIRECTION\_CLOCKWISE) or Counter-Clockwise (INTERP\_ARC\_DIRECTION\_COUNTER\_CLOCKWISE).

**MainAxisCenterPoint:** The center point of main-axis. This parameter is the relative offset to the current position. And the negative value indicates that the finish point is in reverse-direction.

**SlaveAxisCenterPoint:** The center point of slave-axis. This parameter is the relative offset to the current position. And the negative value indicates that the finish point is in reverse-direction.

**MainAxisFinishPoint:** The finish point of main-axis. This parameter is the relative offset to the current position. And the negative value indicates that the finish point is in reverse-direction.

**SlaveAxisFinishPoint:** The finish point of slave-axis. This parameter is the relative offset to the current position. And the negative value indicates that the finish point is in reverse-direction.

**wAccCntOffset:** This optional parameter to configure the offset for Acceleration/Deceleration driving. The default setting of **wAccCntOffset** is 8.

**wBlockMode:** The Block/Non-Block operation mode. Now only DISABLE\_BLOCK\_OPEARTION is valid.

**Return Code:**

**SUCCESS\_NO\_ERROR:** The function returns successfully.

**ERROR\_INVALID\_CARD\_ID:** There is no active i-8092 module on the given slot, bSlotNum; or the given slot-number is invalid (for instance, slot-number is assigned to 254).

**ERROR\_MULTI\_AXES\_ASSIGNED:** Multiple axes are assigned to parameter **wMainAxis** or **wSlaveAxis**.

**ERROR\_NO\_VALID\_AXIS\_ASSIGNED:** No valid axis ID is assigned to parameter **wMainAxis** or **wSlaveAxis**.

**ERROR\_INVALID\_INTERPOLATION\_ARC\_DIRECTION:** Neither INTERP\_ARC\_DIRECTION\_CLOCKWISE nor INTERP\_ARC\_DIRECTION\_COUNTER\_CLOCKWISE is assigned to parameter **wArcDirection**.

ERROR\_INVALID\_INTERPOLATION\_SLAVE\_AXES: The parameter **wSlaveAxis** includes the axis ID assigned to **wMainAxis**.

ERROR\_INVALID\_BLOCK\_OPEARTION\_MODE: Not DISABLE\_BLOCK\_OPEARTION is assigned to parameter **wBlockMode**.

ERROR\_START\_SPEED\_EXCEED\_DRIVING\_SPEED: The **dwStartSpeed** is larger than **dwDriveSpeed**.

ERROR\_INVALID\_START\_SPEED: The value assigned to parameter **dwStartSpeed** is out of range of Speed. Please refer to i8092\_set\_range() and i8092\_get\_range\_settings().

ERROR\_INVALID\_DRIVING\_SPEED: The value assigned to parameter **dwDriveSpeed** is out of range of Speed. Please refer to i8092\_set\_range() and i8092\_get\_range\_settings().

ERROR\_INVALID\_ACCELERATION: The value assigned to parameter **dwAcceleration** is out of range of Acceleration. Please refer to i8092\_set\_range() and i8092\_get\_range\_settings().

ERROR\_ARC\_DECELERATION\_POINT\_CALCULATE: The path of circular moving is too small. Please try to increase the circular-path.

ERROR\_INTERPOLATION\_NOT\_COMPLETE: The interpolation moving started before had not completed.

ERROR\_OCCURS\_IN\_AXIS\_X, ERROR\_OCCURS\_IN\_AXIS\_Y, ERROR\_OCCURS\_IN\_AXIS\_XY: Indicates that some error happens to AXIS\_xxxx. Please call i8092\_get\_error\_status() for detailed information.

ERROR\_MOTION\_NOT\_COMPLETE: Indicates the previous motion is not completed.

ERROR\_CONFLICT\_WITH\_MPG: Indicates the previous Manual-Pulse-Generator setting is active. Please disable MPG settings with i8092\_set\_mpg().

ERROR\_AXES\_MOVE\_CHECK: Cannot forward the Axes-checking command to system, please call GetLastError() for further system information.

ERROR\_T\_ARC2\_START: Cannot start circular interpolation moving, please call GetLastError() for further system information.

## 5.2 Continuous Interpolation Moving

The continuous interpolation provides none-stop linear & circular interpolation moving. The continuous interpolation moving is combined with multiple linear & circular interpolation segments. To add arbitrary interpolation segment, only the constant Vector-Speed is applied to continuous-interpolation moving.

The continuous interpolation moving is configured with `i8092_conti_interp_begin()` and completed with `i8092_conti_interp_end()`. All settings that are configured with `i8092_conti_interp_begin()` will be kept in driver until `i8092_conti_interp_end()` being called. The interpolation segments after `i8092_conti_interp_begin()` will use these configurations, including axes involved in interpolation-moving and constant Vector-Speed.

To avoid the continuous interpolation to be interrupted, the configurations of next interpolation segment had better be set as soon as possible. The function, `i8092_conti_interp_next_ready()`, indicates the next interpolation segment is ready to be configured.

In case the continuous-interpolation moving is terminated, you could re-start the uncompleted interpolation segments with `INTERP_CONTINUE_START` setting in parameter ***wContiInterpMoveMode***. The typical programming following-chart is described in Figure 6. Please refer to the 'Conti\_Interp' sample.

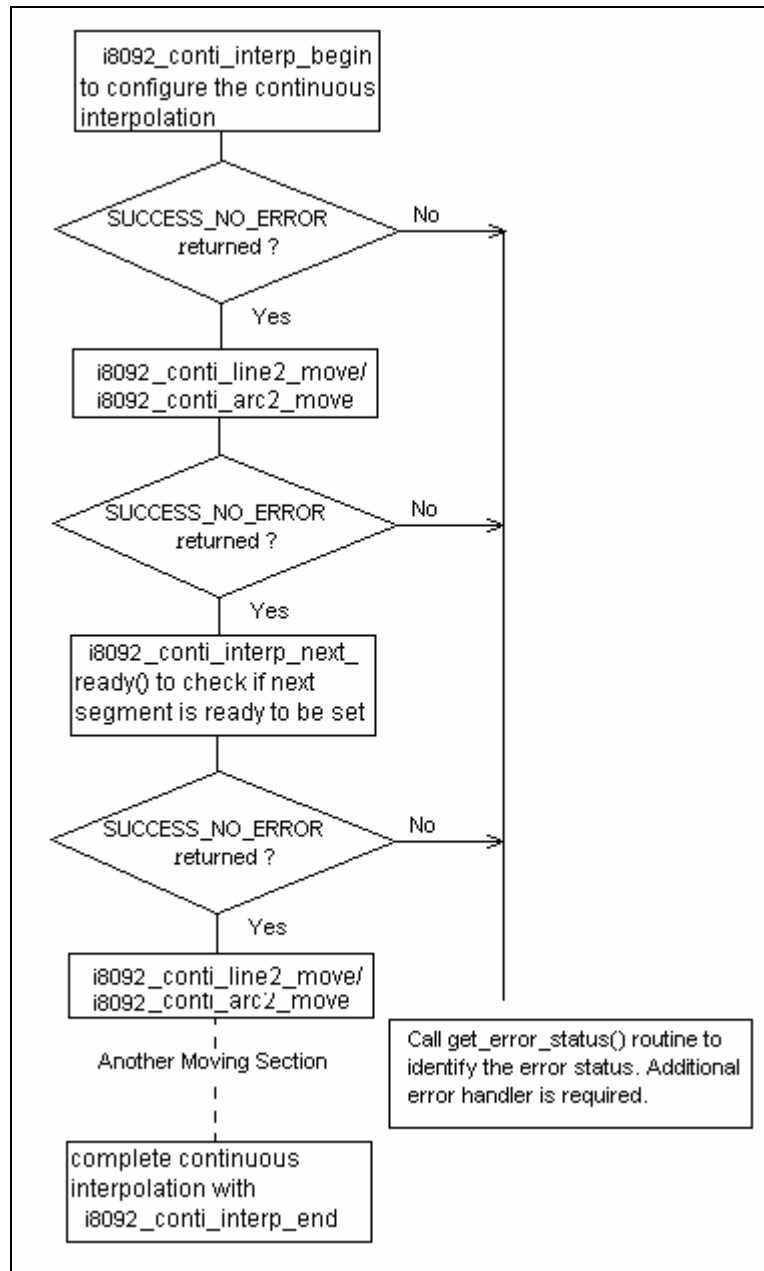


Figure 6 - typical programming following-chart of continuous-interpolation

## 5.2.1 i8092\_conti\_interp\_begin

short i8092\_conti\_interp\_begin(BYTE bSlotNum, WORD wMainAxis, WORD wSecondAxis, WORD wThirdAxis, DWORD dwConstSpeed)

### Description:

This function configures the involved axes, the constant vector-speed in continuous interpolation moving.

### Parameters:

bSlotNum: The specific slot number that i-8092 installed on.

wMainAxis: The main-axis of interpolation moving. Now only AXIS\_X is valid..

wSecondAxis: The second-axis of Interpolation moving. Now only AXIS\_Y is valid.

wThirdAxis: This parameter is reserved and will be ignored.

dwConstSpeed: The constant Vector-Speed in continuous interpolation. This parameter should be less than 2,000,000 PPS )

### Return Code:

SUCCESS\_NO\_ERROR: The function returns successfully.

ERROR\_INVALID\_CARD\_ID: There is no active i-8092 module on the given slot, bSlotNum; or the given slot-number is invalid (for instance, slot-number is assigned to 254).

ERROR\_MULTI\_AXES\_ASSIGNED: Multiple axes are assigned to parameter **wMainAxis** or **wSecondAxis**.

ERROR\_NO\_VALID\_AXIS\_ASSIGNED: No valid axis ID is assigned to parameter **wMainAxis** or **wSecondAxis**.

ERROR\_INVALID\_INTERPOLATION\_SLAVE\_AXES: The **wSecondAxis** includes the axis ID assigned to **wMainAxis**.

ERROR\_INVALID\_DRIVING\_SPEED: The value assigned to parameter **dwDriveSpeed** is out of range of Speed. Please refer to i8092\_set\_range() and i8092\_get\_range\_settings().

ERROR\_INTERPOLATION\_NOT\_COMPLETE: The previous interpolation-moving had not been completed.

ERROR\_OCCURS\_IN\_AXIS\_X, ERROR\_OCCURS\_IN\_AXIS\_Y, ERROR\_OCCURS\_IN\_AXIS\_XY: Indicates that some error happens to AXIS\_xxxx. Please call i8092\_get\_error\_status() for detailed information.

ERROR\_MOTION\_NOT\_COMPLETE: Indicates the previous motion is not completed.

ERROR\_CONFLICT\_WITH\_MPG: Indicates the previous Manual-Pulse-Generator setting is active. Please disable MPG settings with i8092\_set\_mpg().

ERROR\_AXES\_MOVE\_CHECK: Cannot forward the Axes-checking command to system, please call GetLastError() for further system information.

ERROR\_INVALID\_RANGE: The assigned value is invalid.

ERROR\_RANGE\_CHANGE: Cannot change the settings of **Range** register, please call GetLastError() for further system information.

ERROR\_CONTI\_INTERP\_SET: Cannot configure continuous-interpolation moving, please call GetLastError() for further system information.

## 5.2.2 i8092\_conti\_interp\_next\_ready

```
short i8092_conti_interp_next_ready(BYTE bSlotNum, BYTE *pReady)
```

### Description:

This function checks if the next interpolation segment is ready to be set.

### Parameters:

bSlotNum: The specific slot number that i-8092 installed on.

pReady: The pointer to the memory that stores the ready-status of next interpolation segment.

### Return Code:

SUCCESS\_NO\_ERROR: The function returns successfully.

ERROR\_INVALID\_CARD\_ID: There is no active i-8092 module on the given slot, bSlotNum; or the given slot-number is invalid (for instance, slot-number is assigned to 254).

ERROR\_CONFIG\_IS\_NEEDED: The continuous interpolation had not been configured. Please call i8092\_conti\_interp\_begin() first.

ERROR\_CONTI\_INTERP\_NEXT\_READY: Cannot get the next-ready status, please call GetLastError() for further system information.



## 5.2.3 i8092\_conti\_line2\_move

short i8092\_conti\_line2\_move(BYTE bSlotNum, long MainAxisFinishPoint, long SlaveAxisFinishPoint, WORD wContiInterpMoveMode)

### Description:

This function starts the constant vector-speed, 2-dimension linear interpolation moving.

### Parameters:

bSlotNum: The specific slot number that i-8092 installed on.

MainAxisFinishPoint: The finish point of main-axis. This parameter is the relative offset to the current position. And the negative value indicates that the finish point is in reverse-way.

SlaveAxisFinishPoint: The finish point of slave-axis. This parameter is the relative offset to the current position. And the negative value indicates that the finish point is in reverse-way

wContiInterpMoveMode:

INTERP\_CONTINUE\_START: indicates the begin of continuous interpolation moving.

INTERP\_NEXT\_CONTINUOUS\_MOTION: indicates the interpolation segment is one part of continuous interpolation moving, and the interrupt of motion checking is involved implicitly.

### Return Code:

SUCCESS\_NO\_ERROR: The function returns successfully.

ERROR\_INVALID\_CARD\_ID: There is no active i-8092 module on the given slot, bSlotNum; or the given slot-number is invalid (for instance, slot-number is assigned to 254).

ERROR\_CONFIG\_IS\_NEEDED: The continuous interpolation had not been configured. Please call i8092\_conti\_interp\_begin() first.

ERROR\_INVALID\_CONTINUE\_INTERPOLATION\_MOTION: Neither INTERP\_CONTINUE\_START nor INTERP\_NEXT\_CONTINUOUS\_MOTION is assigned to parameter **wContiInterpMoveMode**.

ERROR\_OCCURS\_IN\_AXIS\_X, ERROR\_OCCURS\_IN\_AXIS\_Y, ERROR\_OCCURS\_IN\_AXIS\_XY: Indicates that some error happens to AXIS\_xxxx. Please call i8092\_get\_error\_status() for detailed information.

ERROR\_CONTI\_INTERP\_INTERRUPTED: Indicates the continuous interpolation moving is interrupted. This code is returned only when **wContiInterpMoveMode** is set as INTERP\_NEXT\_CONTINUOUS\_MOTION.

ERROR\_MOTION\_NOT\_COMPLETE: Indicates the previous motion is not completed. This code is returned only when **wContiInterpMoveMode** is set as INTERP\_CONTINUE\_START.

ERROR\_CONTI\_INTERP\_NEXT\_NOT\_READY: Indicates the internal Motion-Control ASIC is not ready to set the next interpolation segment. Please call `i8092_conti_interp_next_ready()` first.

ERROR\_CONTI\_INTERP\_LINE2\_MOVE: Cannot start `i8092_conti_line2_move`, please call `GetLastError()` for further system information.

## 5.2.4 i8092\_conti\_arc2\_move

short i8092\_conti\_arc2\_move(BYTE bSlotNum, WORD wArcDirection, long MainAxisCenterPoint, long SlaveAxisCenterPoint, long MainAxisFinishPoint, long SlaveAxisFinishPoint, WORD wContiInterpMoveMode)

### Description:

This function starts the constant vector-speed, 2-dimension linear interpolation moving.

### Parameters:

bSlotNum: The specific slot number that i-8092 installed on.

wArcDirection: Clockwise (INTERP\_ARC\_DIRECTION\_CLOCKWISE) or Counter-Clockwise (INTERP\_ARC\_DIRECTION\_COUNTER\_CLOCKWISE).

MainAxisCenterPoint: The center point of main-axis. This parameter is the relative offset to the current position. And the negative value indicates that the finish point is in reverse-way.

SlaveAxisCenterPoint: The center point of slave-axis. This parameter is the relative offset to the current position. And the negative value indicates that the finish point is in reverse-way

MainAxisFinishPoint: The finish point of main-axis. This parameter is the relative offset to the current position. And the negative value indicates that the finish point is in reverse-way.

SlaveAxisFinishPoint: The finish point of slave-axis. This parameter is the relative offset to the current position. And the negative value indicates that the finish point is in reverse-way

wContiInterpMoveMode:

INTERP\_CONTINUE\_START: indicates the begin of continuous interpolation moving.

INTERP\_NEXT\_CONTINUOUS\_MOTION: indicates the interpolation segment is one part of continuous interpolation moving, and the interrupt of motion checking in involved implicitly.

### Return Code:

SUCCESS\_NO\_ERROR: The function returns successfully.

ERROR\_INVALID\_CARD\_ID: There is no active i-8092 module on the given slot, bSlotNum; or the given slot-number is invalid (for instance, slot-number is assigned to 254).

ERROR\_CONFIG\_IS\_NEEDED: The continuous interpolation had not been configured. Please call i8092\_conti\_interp\_begin() first.

ERROR\_INVALID\_CONTINUE\_INTERPOLATION\_MOTION: Neither INTERP\_CONTINUE\_START nor INTERP\_NEXT\_CONTINUOUS\_MOTION is assigned to parameter **wContiInterpMoveMode**.

ERROR\_INVALID\_INTERPOLATION\_ARC\_DIRECTION: Neither  
INTERP\_ARC\_DIRECTION\_CLOCKWISE nor  
INTERP\_ARC\_DIRECTION\_COUNTER\_CLOCKWISE is assigned to parameter  
**wArcDirection**.

ERROR\_OCCURS\_IN\_AXIS\_X, ERROR\_OCCURS\_IN\_AXIS\_Y, ERROR\_OCCURS\_IN\_AXIS\_XY:  
Indicates that some error happens to AXIS\_xxxx. Please call i8092\_get\_error\_status()  
for detailed information.

ERROR\_CONTI\_INTERP\_INTERRUPTED: Indicates the continuous interpolation moving is  
interrupted. This code is returned only when **wContiInterpMoveMode** is set as  
INTERP\_NEXT\_CONTINUOUS\_MOTION.

ERROR\_MOTION\_NOT\_COMPLETE: Indicates the previous motion is not completed. This code is  
returned only when **wContiInterpMoveMode** is set as INTERP\_CONTINUE\_START.

ERROR\_CONTI\_INTERP\_NEXT\_NOT\_READY: Indicates the internal Motion-Control ASIC is not  
ready to set the next interpolation segment, please call i8092\_conti\_interp\_next\_ready()  
first.

ERROR\_CONTI\_INTERP\_ARC2\_MOVE: Cannot start i8092\_conti\_arc2\_move, please call  
GetLastError() for further system information.

## 5.2.5 i8092\_conti\_interp\_end

short i8092\_conti\_interp\_end (BYTE bSlotNum)

### Description:

This function completes the continuous-interpolation moving, and clears the related configurations kept in driver.

### Parameters:

bSlotNum: The specific slot number that i-8092 installed on.

### Return Code:

SUCCESS\_NO\_ERROR: The function returns successfully.

ERROR\_INVALID\_CARD\_ID: There is no active i-8092 module on the given slot, bSlotNum; or the given slot-number is invalid (for instance, slot-number is assigned to 254).

ERROR\_INVALID\_RANGE: The assigned value is invalid.

ERROR\_RANGE\_CHANGE: cannot change the settings of **Range** register, please call GetLastError() for further system information.

ERROR\_CONTI\_INTERP\_CLEAR: Cannot clear continuous-interpolation settings, please call GetLastError() for further system information.

## Other Motion Functions

This chapter introduces several helpful functions, including `i8092_stop_move()`, `i8092_drv_hold()` and `i8092_drv_start()`.

### 6.1 `i8092_stop_move`

short `i8092_stop_move`(BYTE `bSlotNum`, WORD `wAxis`, WORD `wStopMode`)

**Description:**

This function stops current motion with slowdown or stop-sudden mode. Please call `i8092_motion_done()` to make sure that specific axis stop before starting next motion.

**Parameters:**

`bSlotNum`: The specific slot number that i-8092 installed on.

`wAxis`: Can be one of `AXIS_X` or `AXIS_Y`.

`wStopMode`: `STOP_SLOWDOWN` or `STOP_SUDDEN`.

**Return Code:**

`SUCCESS_NO_ERROR`: The function returns successfully.

`ERROR_INVALID_CARD_ID`: There is no active i-8092 module on the given slot, `bSlotNum`; or the given slot-number is invalid (for instance, slot-number is assigned to 254).

`ERROR_MULTI_AXES_ASSIGNED`: Multiple axes are assigned to parameter ***wAxis***.

`ERROR_NO_VALID_AXIS_ASSIGNED`: No valid axis ID is assigned to parameter ***wAxis***.

`ERROR_INVALID_STOP_MODE`: Neither `STOP_SLOWDOWN` nor `STOP_SUDDEN` is assigned to parameter ***wStopMode***.

`ERROR_MOTION_STOP_SET`: Cannot stop current motion, please call `GetLastError()` for further system information.

## 6.2 i8092\_stop\_move\_all

short i8092\_stop\_move\_all(BYTE bSlotNum, WORD wAxes, WORD wStopMode)

### Description:

This helpful function stops motion of multiple axes. Please call i8092\_motion\_done() to make sure that all axes stop before starting next motion.

### Parameters:

bSlotNum: The specific slot number that i-8092 installed on.

wAxes: can be any combination of AXIS\_X or AXIS\_Y.

wStopMode: STOP\_SLOWDOWN or STOP\_SUDDEN.

### Return Code:

SUCCESS\_NO\_ERROR: The function returns successfully.

ERROR\_INVALID\_CARD\_ID: There is no active i-8092 module on the given slot, bSlotNum; or the given slot-number is invalid (for instance, slot-number is assigned to 254).

ERROR\_MULTI\_AXES\_ASSIGNED: Invalid axis-combination is assigned to parameter **wAxes**.

ERROR\_INVALID\_STOP\_MODE: Neither STOP\_SLOWDOWN nor STOP\_SUDDEN is assigned to parameter **wStopMode**.

ERROR\_MOTION\_STOP\_SET: Cannot stop current motion, please call GetLastError() for further system information.

## 6.3 i8092\_drv\_hold

short i8092\_drv\_hold(BYTE bSlotNum, WORD wAxes)

### Description:

This function holds the motion-starting of the involved axes. And these involved axes will start moving simultaneously when i8092\_drv\_start() is called.

### Parameters:

bSlotNum: The specific slot number that i-8092 installed on.

wAxes: Can be any combination of AXIS\_X or AXIS\_Y.

### Return Code:

SUCCESS\_NO\_ERROR: The function returns successfully.

ERROR\_INVALID\_CARD\_ID: There is no active i-8092 module on the given slot, bSlotNum; or the given slot-number is invalid (for instance, slot-number is assigned to 254).

ERROR\_MULTI\_AXES\_ASSIGNED: Invalid axis-combination is assigned to parameter **wAxes**.

ERROR\_HOLD\_AXES\_NOT\_RELEASE: Indicates the some axes had been hold, please call i8092\_drv\_start() to release the hold-axes first.

ERROR\_MOTION\_NOT\_COMPLETE: Indicates the previous motion is not completed.

ERROR\_DRIVE\_HOLD: Cannot hold the motion-starting, please call GetLastError() for further system information.



## 6.4 i8092\_drv\_start

short i8092\_drv\_start(BYTE bSlotNum, WORD wAxes)

### Description:

This function starts multiple axes simultaneously that are held by i8092\_drv\_hold().

### Parameters:

bSlotNum: The specific slot number that i-8092 installed on.

wAxes: Can be any combination of AXIS\_X or AXIS\_Y.

### Return Code:

SUCCESS\_NO\_ERROR: The function returns successfully.

ERROR\_INVALID\_CARD\_ID: There is no active i-8092 module on the given slot, bSlotNum; or the given slot-number is invalid (for instance, slot-number is assigned to 254).

ERROR\_MULTI\_AXES\_ASSIGNED: Invalid axis-combination is assigned to parameter **wAxes**.

ERROR\_HOLD\_AXES\_NOT\_MATCH: The axes that will to be started are not match to the axes that are held by i8092\_drv\_hold().

ERROR\_DRIVE\_START: Cannot start motion of held axes, please call GetLastError() for further system information.

# Advanced Motion Configurations

This chapter introduces some advanced features, including variable-ring counter, manual-pulse-generator and the synchronous-action between axes.

The advanced features are special, and maybe not co-exist with normal operation. It's recommended to disable these functions when they are not needed.

## 7.1 i8092\_set\_vring

short i8092\_set\_vring(BYTE bSlotNum, WORD wAxis, WORD wVRINGEnable, DWORD dwRingValue)

### Description:

This function enables and configures the variable-ring feature for both logic-command and encoder-position counters. After enabling variable-ring feature, these two counters will be reset to zero automatically.

### Parameters:

bSlotNum: The specific slot number that i-8092 installed on.

wAxis: Can be one of AXIS\_X or AXIS\_Y.

wVRINGEnable: VARIABLE\_RING\_ENABLE\_FEATURE or VARIABLE\_RING\_DISABLE\_FEATURE.

dwRingValue: The total numbers that counter can count. (  $2 < dwRingValue$  ).

For instance, assigning 10,000 to dwRingValue indicates the operation of ring-counter

will be: increasing in forward direction ... →9998→9999→0→1→...

decreasing in reserve direction ...→1→0→9999→9998→...

### Return Code:

SUCCESS\_NO\_ERROR: The function returns successfully.

ERROR\_INVALID\_CARD\_ID: There is no active i-8092 module on the given slot, bSlotNum; or the given slot-number is invalid (for instance, slot-number is assigned to 254).

ERROR\_MULTI\_AXES\_ASSIGNED: Multiple axes are assigned to parameter **wAxis**.

ERROR\_NO\_VALID\_AXIS\_ASSIGNED: No valid axis ID is assigned to parameter **wAxis**.

ERROR\_INVALID\_RING\_COUNTER: Indicates the parameter **dwRingValue** is less than 2.

ERROR\_INVALID\_FILTER\_ENABLE: Neither VARIABLE\_RING\_ENABLE\_FEATURE nor VARIABLE\_RING\_DISABLE\_FEATURE is assigned to parameter **wVRINGEnable**.

ERROR\_CONFLICT\_WITH\_SOFTLIMIT: Indicates that the AXIS-Internal Comparators are used for software-limit. Please disable software-limit feature with i8092\_set\_softlimit().

ERROR\_VRING\_SET: Cannot enable/configure the variable-ring feature, please call GetLastError() for further system information.

## 7.2 i8092\_set\_mpg

short i8092\_set\_mpg(BYTE bSlotNum, WORD wAxis, WORD wEXPCConfig, DWORD dwFixedPulse, DWORD dwSpeed, DWORD dwMaxMPGFreq)

### Description:

This function enables and configures the manual-pulse-generator feature. After enabling manual-pulse-generator feature, the constant-speed motion will be started when every pulse is sent from external manual-pulse-generator.

### Parameters:

bSlotNum: The specific slot number that i-8092 installed on.

wAxis: Can be one of AXIS\_X or AXIS\_Y.

wEXPCConfig: EXP\_AB\_PHASE\_MPG, EXP\_CW\_CCW\_ACTIVE\_LOW\_MPG or EXP\_DISABLE\_FEATURE.

dwFixedPulse: Indicates the numbers of pulse will be output when each pulse is sent from manual-pulse-generator. For instance, assigning 5 to this parameter, 5 pulses will be output when each pulse is sent from external manual-pulse-generator.

dwSpeed: The constant-speed of output pulse.

dwMaxMPGFreq: The maximum frequency of the manual-pulse-generator. Please check the datasheet of manual-pulse-generator.

**Notice:** the following formula is needed to be satisfied:

$$\text{dwSpeed} \quad \text{dwMaxMPGFreq} \times \text{dwFixedPulse} \times 2.$$

### Return Code:

SUCCESS\_NO\_ERROR: The function returns successfully.

ERROR\_INVALID\_CARD\_ID: There is no active i-8092 module on the given slot, bSlotNum; or the given slot-number is invalid (for instance, slot-number is assigned to 254).

ERROR\_MULTI\_AXES\_ASSIGNED: Multiple axes are assigned to parameter **wAxis**.

ERROR\_NO\_VALID\_AXIS\_ASSIGNED: No valid axis ID is assigned to parameter **wAxis**.

ERROR\_INVALID\_MPG\_EXP\_CONFIG: Indicates the invalid MPG setting is assigned to parameter **wEXPCConfig**.

ERROR\_INVALID\_MPG\_SPEED: The value assigned to parameter **dwSpeed** is out of range of Speed or is less than **2 x dwMaxMPGFreq x dwFixedPulse**.

ERROR\_MPG\_SET: Cannot enable/configure the manual-pulse-generator, please call GetLastError() for further system information.

## 7.3 i8092\_set\_int\_factor

short i8092\_set\_int\_factor(BYTE bSlotNum, WORD wAxis, WORD wIntFactor)

### Description:

This function configures the motion-related interrupt-factors. Please call i8092\_get\_int\_status() to get the relevant interrupt-status;

### Parameters:

bSlotNum: The specific slot number that i-8092 installed on.

wAxis: Can be one of AXIS\_X or AXIS\_Y.

wIntFactor: The interrupt factor can be the combination of following settings:

INT\_FACTOR\_DISABLE: disables all interrupt factors.

INT\_FACTOR\_EXCEED\_CMP\_NEGATIVE: interrupt will be triggered while the content of logic-command/encoder-position counter is larger than COMP- comparator.

INT\_FACTOR\_LESS\_CMP\_NEGATIVE: interrupt will be triggered while the content of logic-command/encoder-position counter is less than COMP- comparator.

INT\_FACTOR\_LESS\_CMP\_POSITIVE: interrupt will be triggered while the content of logic-command/encoder-position counter is less than COMP+ comparator.

INT\_FACTOR\_EXCEED\_CMP\_POSITIVE: interrupt will be triggered while the content of logic-command/encoder-position counter is larger than COMP+ comparator.

INT\_FACTOR\_END\_CONST\_SPEED\_MOVE: interrupt will be triggered when the constant-speed moving is completed.

INT\_FACTOR\_START\_CONST\_SPEED\_MOVE: interrupt will be triggered when the constant-speed moving is started.

INT\_FACTOR\_END\_DRIVING: interrupt will be triggered when the motion is completed.

### Notice:

If the INT\_FACTOR\_START\_CONST\_SPEED\_MOVE is set, the interrupt will be triggered both at the end of Acceleration and Deceleration.

### Return Code:

SUCCESS\_NO\_ERROR: The function returns successfully.

ERROR\_INVALID\_CARD\_ID: There is no active i-8092 module on the given slot, bSlotNum; or the given slot-number is invalid (for instance, slot-number is assigned to 254).

ERROR\_MULTI\_AXES\_ASSIGNED: Multiple axes are assigned to parameter **wAxis**.

ERROR\_NO\_VALID\_AXIS\_ASSIGNED: No valid axis ID is assigned to parameter **wAxis**.

ERRR\_INVALID\_INT\_FACTOR: Indicates the invalid interrupt factor is assigned to parameter ***wIntFactor***.

ERROR\_INT\_FACTOR\_SET: Cannot enable/configure the specific interrupt factor, please call GetLastError() for further system information.

## Miscellaneous Functions

This chapter introduces some functions that are difficult to be cataloged, including setting the logic-command counter and encoder-position counter, triangle prevention of trapezoidal-profile fixed-pulse driving, changing driving-speed while trapezoidal-profile moving and updating the total numbers of output pulse.

### 8.1 i8092\_t\_change\_v

short i8092\_t\_change\_v(BYTE bSlotNum, WORD wAxis, DWORD dwDriveSpeed)

**Description:**

This function changes the Drive-Speed during trapezoidal-profile moving.

**Parameters:**

bSlotNum: The specific slot number that i-8092 installed on.

wAxis: Can be one of AXIS\_X or AXIS\_Y.

dwDriveSpeed: The Drive-Speed in trapezoidal-profile moving.

**Return Code:**

SUCCESS\_NO\_ERROR: The function returns successfully.

ERROR\_INVALID\_CARD\_ID: There is no active i-8092 module on the given slot, bSlotNum; or the given slot-number is invalid (for instance, slot-number is assigned to 254).

ERROR\_MULTI\_AXES\_ASSIGNED: Multiple axes are assigned to parameter **wAxis**.

ERROR\_NO\_VALID\_AXIS\_ASSIGNED: No valid axis ID is assigned to parameter **wAxis**.

ERROR\_INVALID\_DRIVING\_SPEED: The value assigned to parameter **dwDriveSpeed** is out of range of Speed. Please refer to i8092\_set\_range() and i8092\_get\_range\_settings().

ERROR\_SPEED\_CHANGE\_FAIL\_IN\_ACC\_DEC: Indicates the Drive-Speed cannot be changed during Acceleration/Deceleration.

ERROR\_INVALID\_OPERATION\_IN\_S\_CURVE: Indicates the Drive-Speed cannot be applied to S-curve moving.

ERROR\_NOT\_CONSTANT\_SPEED\_IN\_T\_MOVE: Indicates the Drive-Speed cannot be changed in non-constant speed area of trapezoidal-profile moving.

ERROR\_T\_DRIVING\_SPEED\_CHANGE: Cannot change the Drive-Speed, please call GetLastError() for further system information.



## 8.2 i8092\_t\_set\_avtri

short i8092\_t\_set\_avtri(BYTE bSlotNum, WORD wAxis, WORD wAvTriCfg)

### Description:

This function enables the triangle prevention of fixed-pulse, trapezoidal-profile moving. After enabling this feature, the Motion-Control ASIC will determine the deceleration-point by the following formula:

*Numbers of output pulse*      $2 \times (\text{pulse number at Acceleration} + \text{pulse number at Deceleration})$ .

### Parameters:

bSlotNum: The specific slot number that i-8092 installed on.

wAxis: Can be one of AXIS\_X or AXIS\_Y.

wAvTriCfg: AVOID\_TRIANGLE\_ENABLE\_FEATURE or  
            AVOID\_TRIANGLE\_DISABLE\_FEATURE.

### Return Code:

SUCCESS\_NO\_ERROR: The function returns successfully.

ERROR\_INVALID\_CARD\_ID: There is no active i-8092 module on the given slot, bSlotNum; or the given slot-number is invalid (for instance, slot-number is assigned to 254).

ERROR\_MULTI\_AXES\_ASSIGNED: Multiple axes are assigned to parameter **wAxis**.

ERROR\_NO\_VALID\_AXIS\_ASSIGNED: No valid axis ID is assigned to parameter **wAxis**.

ERROR\_INVALID\_AVOID\_TRIANGLE\_CONFIG: Neither AVOID\_TRIANGLE\_ENABLE\_FEATURE nor AVOID\_TRIANGLE\_DISABLE\_FEATURE is assigned to parameter **wAvTriCfg**.

ERROR\_T\_AVOID\_TRIANGLE\_SET: Cannot set the avoid-triangle feature, please call GetLastError() for further system information.

## 8.3 i8092\_change\_p

short i8092\_change\_p(BYTE bSlotNum, WORD wAxis, DWORD dwP)

### Description:

This function changes the total numbers of output pulse during moving.

### Parameters:

bSlotNum: The specific slot number that i-8092 installed on.

wAxis: Can be one of AXIS\_X or AXIS\_Y.

dwP: The total numbers of output pulse.

### Return Code:

SUCCESS\_NO\_ERROR: The function returns successfully.

ERROR\_INVALID\_CARD\_ID: There is no active i-8092 module on the given slot, bSlotNum; or the given slot-number is invalid (for instance, slot-number is assigned to 254).

ERROR\_MULTI\_AXES\_ASSIGNED: Multiple axes are assigned to parameter **wAxis**.

ERROR\_NO\_VALID\_AXIS\_ASSIGNED: No valid axis ID is assigned to parameter **wAxis**.

ERROR\_CONFLICT\_WITH\_INTERPOLATION\_MOVE: Indicates the finish-point of interpolation moving cannot be changed dynamically.

ERROR\_OUTPUT\_PULSE\_CHANGE: Cannot change total number of output pulse, please call GetLastError() for further system information.

## 8.4 i8092\_set\_cmdcounter

short i8092\_set\_cmdcounter(BYTE bSlotNum, WORD wAxis, long IData)

### Description:

This function set the logic-command counter.

### Parameters:

bSlotNum: The specific slot number that i-8092 installed on.

wAxis: Can be one of AXIS\_X or AXIS\_Y.

IData: The value to be set to logic-command counter.

### Return Code:

SUCCESS\_NO\_ERROR: The function returns successfully.

ERROR\_INVALID\_CARD\_ID: There is no active i-8092 module on the given slot, bSlotNum; or the given slot-number is invalid (for instance, slot-number is assigned to 254).

ERROR\_MULTI\_AXES\_ASSIGNED: Multiple axes are assigned to parameter **wAxis**.

ERROR\_NO\_VALID\_AXIS\_ASSIGNED: No valid axis ID is assigned to parameter **wAxis**.

ERROR\_CMD\_COUNTER\_SET: Cannot set the logic-command counter, please call GetLastError() for further system information.

## 8.5 i8092\_set\_enccounter

short i8092\_set\_enccounter(BYTE bSlotNum, WORD wAxis, DWORD IData)

### Description:

This function set the encoder-counter.

### Parameters:

bSlotNum: The specific slot number that i-8092 installed on.

wAxis: Can be one of AXIS\_X or AXIS\_Y.

IData: The value to be set to encoder-position counter.

### Return Code:

SUCCESS\_NO\_ERROR: The function returns successfully.

ERROR\_INVALID\_CARD\_ID: There is no active i-8092 module on the given slot, bSlotNum; or the given slot-number is invalid (for instance, slot-number is assigned to 254).

ERROR\_MULTI\_AXES\_ASSIGNED: Multiple axes are assigned to parameter **wAxis**.

ERROR\_NO\_VALID\_AXIS\_ASSIGNED: No valid axis ID is assigned to parameter **wAxis**.

ERROR\_POS\_COUNTER\_SET: Cannot set the encoder-position counter, please call GetLastError() for further system information.

# Status

This chapter introduces functions to get the status of i-8092 module, including `i8092_motion_done()`, `i8092_get_cmdcounter()`, `i8092_get_position()`, `i8092_get_speed()`, `i8092_get_acc()`, `i8092_get_mdi_status()`, `i8092_get_in3()`, `i8092_get_int_status()` and `i8092_get_error_status()`.

## 9.1 i8092\_motion\_done

`short i8092_motion_done(BYTE bSlotNum, WORD wAxis, BYTE* pDone, WORD* pStopStatus)`

### Description:

This function checks the completion of motion and reports the cause of motion-completion.

### Parameters:

`bSlotNum`: The specific slot number that i-8092 installed on.

`wAxis`: can be one of `AXIS_X` or `AXIS_Y`.

`pDone`: The pointer to the memory that stores the motion-status. The motion-status will be

`MOTION_DONE`: the specific axis is stop.

`MOTION_NOT_DONE`: the specific axis is driving.

`pStopStatus`: The pointer to the memory that stores the cause of motion-completion, including

`DRIVE_FINISH_WITH_SW_LIMIT_POSITIVE`: reaches software limit in forward direction and stops

`DRIVE_FINISH_WITH_SW_LIMIT_NEGATIVE`: reaches software limit in reverse direction and stops

`DRIVE_FINISH_WITH_STOP_COMMAND`: the stop command is executed.

`DRIVE_FINISH_OUTPUT_FIXED_PULSE`: completion of fixed-pulse moving.

`DRIVE_FINISH_WITH_STOP0`: completion of near-home-sensor searching.

`DRIVE_FINISH_WITH_STOP1`: completion of home-sensor searching.

`DRIVE_FINISH_WITH_STOP2`: completion of Z-Phase/INDEX sensor searching.

`DRIVE_FINISH_WITH_LIMIT_POSITIVE`: reaches hardware limit in forward direction

and stops

DRIVE\_FINISH\_WITH\_LIMIT\_NEGATIVE: reaches hardware limit in reverse direction and stops

DRIVE\_FINISH\_WITH\_ALARM: the ALARM feature is enabled and is active to stop driving.

DRIVE\_FINISH\_WITH\_EMG: the driving is stopped when EMG is active.

**Return Code:**

SUCCESS\_NO\_ERROR: The function returns successfully.

ERROR\_INVALID\_CARD\_ID: There is no active i-8092 module on the given slot, bSlotNum; or the given slot-number is invalid (for instance, slot-number is assigned to 254).

ERROR\_MULTI\_AXES\_ASSIGNED: Multiple axes are assigned to parameter **wAxis**.

ERROR\_NO\_VALID\_AXIS\_ASSIGNED: No valid axis ID is assigned to parameter **wAxis**.

ERROR\_ACCESS\_VIOLATION\_DATA\_COPY: Some system exception occurs while copying memory, please check the pointer-type parameter you assign to this function.

ERROR\_MOTION\_DONE\_GET: Cannot get motion status, please call GetLastError() for further system information.

## 9.2 i8092\_get\_cmdcounter

short i8092\_get\_cmdcounter(BYTE bSlotNum, WORD wAxis, long\* pData)

### Description:

This function gets the content of logic-command counter.

### Parameters:

bSlotNum: The specific slot number that i-8092 installed on.

wAxis: Can be one of AXIS\_X or AXIS\_Y.

pData: The pointer to the memory that stores logic-command counter.

### Return Code:

SUCCESS\_NO\_ERROR: The function returns successfully.

ERROR\_INVALID\_CARD\_ID: There is no active i-8092 module on the given slot, bSlotNum; or the given slot-number is invalid (for instance, slot-number is assigned to 254).

ERROR\_MULTI\_AXES\_ASSIGNED: Multiple axes are assigned to parameter **wAxis**.

ERROR\_NO\_VALID\_AXIS\_ASSIGNED: No valid axis ID is assigned to parameter **wAxis**.

ERROR\_ACCESS\_VIOLATION\_DATA\_COPY: Some system exception occurs while copying memory, please check the pointer-type parameter you assign to this function.

ERROR\_CMD\_COUNTER\_GET: Cannot get the logic-command counter, please call GetLastError() for further system information.

## 9.3 i8092\_get\_enccounter

short i8092\_get\_enccounter(BYTE bSlotNum, WORD wAxis, long\* pData)

### Description:

This function gets the content of encoder-counter.

### Parameters:

bSlotNum: The specific slot number that i-8092 installed on.

wAxis: Can be one of AXIS\_X or AXIS\_Y.

pData: The pointer to the memory that stores encoder-position counter.

### Return Code:

SUCCESS\_NO\_ERROR: The function returns successfully.

ERROR\_INVALID\_CARD\_ID: There is no active i-8092 module on the given slot, bSlotNum; or the given slot-number is invalid (for instance, slot-number is assigned to 254).

ERROR\_MULTI\_AXES\_ASSIGNED: Multiple axes are assigned to parameter **wAxis**.

ERROR\_NO\_VALID\_AXIS\_ASSIGNED: No valid axis ID is assigned to parameter **wAxis**.

ERROR\_ACCESS\_VIOLATION\_DATA\_COPY: Some system exception occurs while copying memory, please check the pointer-type parameter you assign to this function.

ERROR\_POS\_COUNTER\_GET: Cannot get the encoder-position counter, please call GetLastError() for further system information.



## 9.4 i8092\_get\_speed

short i8092\_get\_speed(BYTE bSlotNum, WORD wAxis, DWORD\* pSpeed)

### Description:

This function gets the speed of current motion.

### Parameters:

bSlotNum: The specific slot number that i-8092 installed on.

wAxis: Can be one of AXIS\_X or AXIS\_Y.

pSpeed: The pointer to the memory that stores speed of current motion.

### Return Code:

SUCCESS\_NO\_ERROR: The function returns successfully.

ERROR\_INVALID\_CARD\_ID: There is no active i-8092 module on the given slot, bSlotNum; or the given slot-number is invalid (for instance, slot-number is assigned to 254).

ERROR\_MULTI\_AXES\_ASSIGNED: Multiple axes are assigned to parameter **wAxis**.

ERROR\_NO\_VALID\_AXIS\_ASSIGNED: No valid axis ID is assigned to parameter **wAxis**.

ERROR\_ACCESS\_VIOLATION\_DATA\_COPY: Some system exception occurs while copying memory, please check the pointer-type parameter you assign to this function.

ERROR\_SPEED\_GET: Cannot get the current speed, please call GetLastError() for further system information.

## 9.5 i8092\_get\_acc

short i8092\_get\_acc(BYTE bSlotNum, WORD wAxis, DWORD\* pAcc)

### Description:

This function gets the acceleration of current motion.

### Parameters:

bSlotNum: The specific slot number that i-8092 installed on.

wAxis: Can be one of AXIS\_X or AXIS\_Y.

pAcc: The pointer to the memory that stores acceleration of current motion.

### Return Code:

SUCCESS\_NO\_ERROR: The function returns successfully.

ERROR\_INVALID\_CARD\_ID: There is no active i-8092 module on the given slot, bSlotNum; or the given slot-number is invalid (for instance, slot-number is assigned to 254).

ERROR\_MULTI\_AXES\_ASSIGNED: Multiple axes are assigned to parameter **wAxis**.

ERROR\_NO\_VALID\_AXIS\_ASSIGNED: No valid axis ID is assigned to parameter **wAxis**.

ERROR\_ACCESS\_VIOLATION\_DATA\_COPY: Some system exception occurs while copying memory, please check the pointer-type parameter you assign to this function.

ERROR\_ACCELERATION\_GET: cannot get the current acceleration, please call GetLastError() for further system information.

## 9.6 i8092\_get\_mdi\_status

short i8092\_get\_mdi\_status(BYTE bSlotNum, WORD wAxis, WORD\* pDIStatus)

### Description:

This function checks the status of motion-related digital inputs.

### Parameters:

bSlotNum: The specific slot number that i-8092 installed on.

wAxis: Can be one of AXIS\_X or AXIS\_Y.

pDIStatus: The pointer to the memory that stores the motion-related digital inputs. The value stored in this parameter may be the combination of following status:

DI\_STATUS\_ACTIVE\_DRIVING: indicates the specific axis is driving.

DI\_STATUS\_ACTIVE\_LMTP: the hardware limit in forward direction is active.

DI\_STATUS\_ACTIVE\_LMTM: the hardware limit in reverse direction is active.

DI\_STATUS\_ACTIVE\_EMG: the EMG signal is active.

DI\_STATUS\_ACTIVE\_ALARM: the ALARM signal is enabled and active.

DI\_STATUS\_ACTIVE\_HOME: the Home (ORG) signal is active.

DI\_STATUS\_ACTIVE\_NEARHOME: the Near-Home (NORG) signal is active.

DI\_STATUS\_ACTIVE\_INP: the INP signal is enabled and active.

DI\_STATUS\_ACTIVE\_INDEX: The Z-Phase/INDEX signal is active.

### Return Code:

SUCCESS\_NO\_ERROR: The function returns successfully.

ERROR\_INVALID\_CARD\_ID: There is no active i-8092 module on the given slot, bSlotNum; or the given slot-number is invalid (for instance, slot-number is assigned to 254).

ERROR\_MULTI\_AXES\_ASSIGNED: Multiple axes are assigned to parameter **wAxis**.

ERROR\_NO\_VALID\_AXIS\_ASSIGNED: No valid axis ID is assigned to parameter **wAxis**.

ERROR\_ACCESS\_VIOLATION\_DATA\_COPY: Some system exception occurs while copying memory, please check the pointer-type parameter you assign to this function.

ERROR\_DI\_STATUS\_GET Cannot get motion-related digital inputs, please call GetLastError() for further system information.

## 9.7 i8092\_get\_in3

short i8092\_get\_in3(BYTE bSlotNum, WORD wAxis, BYTE\* pIN3Status)

### Description:

This function gets the status of digital input **IN3**.

### Parameters:

bSlotNum: The specific slot number that i-8092 installed on.

wAxis: Can be one of AXIS\_X or AXIS\_Y.

pIN3Status: The pointer to the memory that stores the input of IN3. The value stored in this parameter will be 0x01 or 0x00.

### Return Code:

SUCCESS\_NO\_ERROR: The function returns successfully.

ERROR\_INVALID\_CARD\_ID: There is no active i-8092 module on the given slot, bSlotNum; or the given slot-number is invalid (for instance, slot-number is assigned to 254).

ERROR\_MULTI\_AXES\_ASSIGNED: Multiple axes are assigned to parameter **wAxis**.

ERROR\_NO\_VALID\_AXIS\_ASSIGNED: No valid axis ID is assigned to parameter **wAxis**.

ERROR\_ACCESS\_VIOLATION\_DATA\_COPY: Some system exception occurs while copying memory, please check the pointer-type parameter you assign to this function.

ERROR\_IN3\_GET: Cannot get the digital input **IN3**, please call GetLastError() for further system information.

## 9.8 i8092\_get\_int\_status

short i8092\_get\_int\_status(BYTE bSlotNum, WORD wAxis, WORD\* pIntStatus)

### Description:

This function gets the status of interrupt factors.

### Parameters:

bSlotNum: The specific slot number that i-8092 installed on.

wAxis: Can be one of AXIS\_X or AXIS\_Y.

pIntStatus: The pointer to the memory that stores the status of interrupt factors, including

INT\_STATUS\_EXCEED\_CMP\_NEGATIVE,  
INT\_STATUS\_LESS\_CMP\_NEGATIVE,  
INT\_STATUS\_LESS\_CMP\_POSITIVE,  
INT\_STATUS\_EXCEED\_CMP\_POSITIVE,  
INT\_STATUS\_END\_CONST\_SPEED\_MOVE,  
INT\_STATUS\_START\_CONST\_SPEED\_MOVE,  
INT\_STATUS\_END\_DRIVING

Please refer to i8092\_set\_int\_factor() for the setting of relative interrupt factors.

### Return Code:

SUCCESS\_NO\_ERROR: The function returns successfully.

ERROR\_INVALID\_CARD\_ID: There is no active i-8092 module on the given slot, bSlotNum; or the given slot-number is invalid (for instance, slot-number is assigned to 254).

ERROR\_MULTI\_AXES\_ASSIGNED: Multiple axes are assigned to parameter **wAxis**.

ERROR\_NO\_VALID\_AXIS\_ASSIGNED: No valid axis ID is assigned to parameter **wAxis**.

ERROR\_ACCESS\_VIOLATION\_DATA\_COPY: Some system exception occurs while copying memory, please check the pointer-type parameter you assign to this function.

ERROR\_INT\_STATUS\_GET: Cannot get the status of interrupt, please call GetLastError() for further system information.

## 9.9 i8092\_get\_error\_status

short i8092\_get\_error\_status(BYTE bSlotNum, WORD wAxis, WORD\* pErrorStatus)

### Description:

This function gets the error-status of specific axis.

### Parameters:

bSlotNum: The specific slot number that i-8092 installed on.

wAxis: Can be one of AXIS\_X or AXIS\_Y.

pErrorStatus: The pointer to the memory that stores the error status, including

DRIVE\_ERROR\_STATUS\_SLMTP: error caused by software limit in forward direction.

DRIVE\_ERROR\_STATUS\_SLMTM: error cause by software limit in reverse direction.

DRIVE\_ERROR\_STATUS\_LMTP: error caused by hardware limit in forward direction.

DRIVE\_ERROR\_STATUS\_LMTM: error caused by hardware limit in reverse direction.

DRIVE\_ERROR\_STATUS\_ALARM: error caused by ALARM signal.

DRIVE\_ERROR\_STATUS\_EMG: error caused by EMG signal.

### Return Code:

SUCCESS\_NO\_ERROR: The function returns successfully.

ERROR\_INVALID\_CARD\_ID: There is no active i-8092 module on the given slot, bSlotNum; or the given slot-number is invalid (for instance, slot-number is assigned to 254).

ERROR\_MULTI\_AXES\_ASSIGNED: Multiple axes are assigned to parameter **wAxis**.

ERROR\_NO\_VALID\_AXIS\_ASSIGNED: No valid axis ID is assigned to parameter **wAxis**.

ERROR\_ACCESS\_VIOLATION\_DATA\_COPY: Some system exception occurs while copying memory, please check the pointer-type parameter you assign to this function.

ERROR\_ERROR\_STATUS\_GET: Cannot get the error status, please call GetLastError() for further system information.

## FRnet I/O extension

The I-8092F equips the FRnet ASIC to connect the remote FRnet I/O extension. The FRnet ASIC provides the real-time status-updating of its remote I/O modules. This chapter introduces the FRnet functions, including `i8092_get_FRnet_DI()` and `i8092_set_FRnet_DO()`.

### 10.1 i8092\_get\_FRnet\_DI

```
short i8092_get_FRnet_DI(BYTE bSlotNum, WORD wSA, WORD *pStatus, WORD
wEnableDirectAccess = FRNET_ENABLE_DIRECT_ACCESS)
```

**Description:**

This function get the digital-inputs of *FRnet* DI module.

**Parameters:**

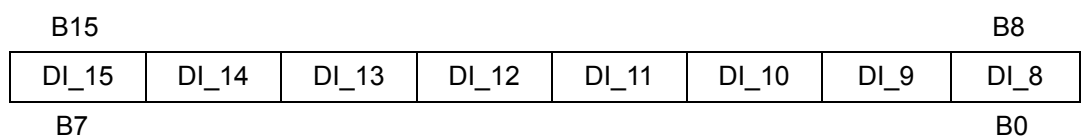
`bSlotNum`: The specific slot number that i-8092 installed on.

`wSA`: The Group-Address of *FRnet* DI module. One of following Group-Address can be assigned to

this parameter:

FRNET\_SA8,  
FRNET\_SA9,  
FRNET\_SA10,  
FRNET\_SA11,  
FRNET\_SA12,  
FRNET\_SA13,  
FRNET\_SA14,  
FRNET\_SA15.

`pStatus`: The pointer to the WORD that indicates each digital-input of *FRnet* DI module.



DI_7	DI_6	DI_5	DI_4	DI_3	DI_2	DI_1	DI_0
------	------	------	------	------	------	------	------

wEnableDirectAccess: Now only FRNET\_ENABLE\_DIRECT\_ACCESS is valid.

**Return Code:**

SUCCESS\_NO\_ERROR: The function returns successfully.

ERROR\_INVALID\_CARD\_ID: There is no active i-8092 module on the given slot, bSlotNum; or the given slot-number is invalid (for instance, slot-number is assigned to 254).

ERROR\_INVALID\_FRNET\_ACCESS\_MODE: Not FRNET\_ENABLE\_DIRECT\_ACCESS is assigned to parameter **wEnableDirectAccess**.

ERROR\_INVALID\_FRNET\_SA\_GROUP\_ADDRESS: Indicates the invalid Group-Address of *FRnet* DI module is assigned to parameter **wSA**.

ERROR\_ACCESS\_VIOLATION\_DATA\_COPY: Some system exception occurs while copying memory, please check the pointer-type parameter you assign to this function.

ERROR\_FRNET\_INPUT: Cannot get the digital-inputs of *FRnet* DI module, please call GetLastError() for further system information.



## 10.2 i8092\_set\_FRnet\_DO

short i8092\_set\_FRnet\_DO(BYTE bSlotNum, WORD wRA, WORD wDOData)

### Description:

This function set the digital-outputs of *FRnet* DO module.

### Parameters:

bSlotNum: The specific slot number that i-8092 installed on.

wRA: The Group-Address of *FRnet* DO module. One of following Group-Address can be assigned to

this parameter:

FRNET\_RA0,

FRNET\_RA1,

FRNET\_RA2,

FRNET\_RA3,

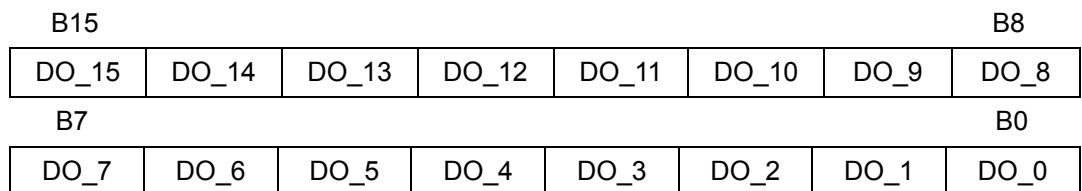
FRNET\_RA7,

FRNET\_RA5,

FRNET\_RA6,

FRNET\_RA7.

wDOData: The 16-bits data to be set to *FRnet* DO module.



### Return Code:

SUCCESS\_NO\_ERROR: The function returns successfully.

ERROR\_INVALID\_CARD\_ID: There is no active i-8092 module on the given slot, bSlotNum; or the given slot-number is invalid (for instance, slot-number is assigned to 254).

ERROR\_INVALID\_FRNET\_RA\_GROUP\_ADDRESS: Indicates the invalid Group-Address of *FRnet* DO module is assigned to parameter **wRA**.

ERROR\_UNSUPPORTED\_FUNCTION : Indicate this function does not support i-8092 module.

ERROR\_FRNET\_OUTPUT: Cannot set the digital-outputs of *FRnet* DO module, please call GetLastError() for further system information.

## Error Code

The Error Codes are divided into three parts: System Error, Parameter Error and Runtime Error.

SUCCESS_NO_ERROR	0
------------------	---

### System Error:

ERROR_ROUTINE_FAIL_BASE	-100
ERROR_GET_MODULE_ID	-101
ERROR_DEVICE_OPEN	-102
ERROR_DEVICE_CLOSE	-103
ERROR_MODULE_RESET	-104
ERROR_RANGE_CHANGE	-105
ERROR_PULSE_MODE_SET	-106
ERROR_ENCODER_MODE_SET	-107
ERROR_LIMIT_SENSOR_SET	-108
ERROR_INP_SIGNAL_SET	-109
ERROR_ALARM_SIGNAL_SET	-110
ERROR_SERVO_ON_SET	-111
ERROR_IN3_SET	-112
ERROR_IN3_GET	-113
ERROR_FILTER_SET	-114
ERROR_SW_LIMIT_SET	-115
ERROR_HOME_CFG_SET	-116
ERROR_HOME_LIMIT_SET	-117
ERROR_START_HOME	-118
ERROR_DI_STATUS_GET	-119
ERROR_ERROR_STATUS_GET	-120
ERROR_CMD_COUNTER_SET	-121
ERROR_CMD_COUNTER_GET	-122
ERROR_POS_COUNTER_SET	-123

ERROR_POS_COUNTER_GET	-124
ERROR_MOTION_DONE_GET	-125
ERROR_SPEED_GET	-126
ERROR_ACCELERATION_GET	-127
ERROR_LATCH_GET	-128
ERROR_MOTION_STOP_SET	-129
ERROR_MOTION_STOP_ALL_SET	-130
ERROR_DRIVE_START	-131
ERROR_DRIVE_HOLD	-132
ERROR_VRING_SET	-133
ERROR_MPG_SET	-134
ERROR_CMPTRIG_SET	-135
ERROR_SYNCH_SET	-136
ERROR_INT_FACTOR_SET	-137
ERROR_INT_STATUS_GET	-138
ERROR_CONTI_MOVE_START	-139
ERROR_CONST_MOVE_START	-140
ERROR_T_MOVE_START	-141
ERROR_S_MOVE_START	-142
ERROR_T_LINE2_START	-143
ERROR_T_LINE3_START	-144
ERROR_S_LINE2_START	-145
ERROR_S_LINE3_START	-146
ERROR_T_ARC2_START	-147
ERROR_CONTI_INTERP_SET	-148
ERROR_CONTI_INTERP_CLEAR	-149
ERROR_CONTI_INTERP_NEXT_READY	-150
ERROR_CONTI_INTERP_LINE2_MOVE	-151
ERROR_CONTI_INTERP_LINE3_MOVE	-152
ERROR_CONTI_INTERP_ARC2_MOVE	-153
ERROR_T_DRIVING_SPEED_CHANGE	-154
ERROR_T_AVOID_TRIANGLE_SET	-155
ERROR_OUTPUT_PULSE_CHANGE	-156
ERROR_OUT1_GET	-157
ERROR_FRNET_DI_MODULE_GET	-158
ERROR_FRNET_FREQUENCY_SET	-159
ERROR_FRNET_INPUT	-160
ERROR_FRNET_OUTPUT	-161

ERROR_FRNET_RESET	-162
ERROR_NEAR_HOME_SEARCH	-163
ERROR_HOME_SEARCH	-164
ERROR_Z_PHASE_SEARCH	-165

Parameter Error:

ERROR_INVALID_PARAMETER_BASE	-200
ERROR_INVALID_CARD_ID	-201
ERROR_INVALID_SCANNED_INDEX	-202
ERROR_MODULE_ID_DUPLICATED	-203
ERROR_INVALID_RANGE	-204
ERROR_INVALID_PULSE_MODE	-205
ERROR_INVALID_PULSE_LEVEL	-206
ERROR_INVALID_PULSE_DIRECTION	-207
ERROR_INVALID_ENCODER_MODE	-208
ERROR_INVALID_LIMIT_LOGIC	-209
ERROR_INVALID_STOP_MODE	-210
ERROR_INVALID_INP_ENABLE	-211
ERROR_INVALID_INP_LOGIC_LEVEL	-212
ERROR_INVALID_ALARM_ENABLE	-213
ERROR_INVALID_ALARM_LOGIC_LEVEL	-214
ERROR_INVALID_SERVO_SETTING	-215
ERROR_INVALID_IN3_ENABLE	-216
ERROR_INVALID_IN3_LOGIC_LEVEL	-217
ERROR_INVALID_FILTER_ENABLE	-218
ERROR_INVALID_FILTER_CONFIGURATION	-219
ERROR_INVALID_FILTER_DELAY_TIME	-220
ERROR_INVALID_SOFTWARE_LIMIT_ENABLE	-221
ERROR_INVALID_SOFTWARE_LIMIT_COMPARATOR_SOURCE	-222
ERROR_INVALID_MOVE_DIRECTION	-223
ERROR_INVALID_HOME_LOGIC_LEVEL	-224
ERROR_INVALID_NEAR_HOME_LOGIC_LEVEL	-225
ERROR_INVALID_INDEX_LOGIC_LEVEL	-226
ERROR_INVALID_AUTO_HOME_STEP	-227
ERROR_INVALID_BLOCK_OPEARTION_MODE	-228
ERROR_INVALID_AVOID_TRIANGLE_CONFIG	-229
ERROR_INVALID_MPG_EXP_CONFIG	-230
ERROR_INVALID_NHOME_SEARCH_SPEED	-231

ERROR_INVALID_HOME_SEARCH_SPEED	-232
ERROR_INVALID_ACCELERATION	-233
ERROR_INVALID_DECELERATION	-234
ERROR_INVALID_JERK	-235
ERROR_INVALID_DECELERATION_RATE	-236
ERROR_INVALID_RING_COUNTER	-237
ERROR_INVALID_RING_ENABLE	-238
ERROR_INVALID_AXIS	-239
ERROR_INVALID_CONST_PITCH	-240
ERROR_INVALID_OFFSET_BUFFER	-241
ERROR_INVALID_OFFSET_LEN	-242
ERROR_INVALID_OFFSET_DATA	-243
ERROR_INVALID_START_SPEED	-244
ERROR_INVALID_DRIVING_SPEED	-245
ERROR_INVALID_MANUAL_DECELERATION_POINT	-246
ERROR_START_SPEED_EXCEED_DRIVING_SPEED	-247
ERROR_MULTI_AXES_ASSIGNED	-248
ERROR_NO_VALID_AXIS_ASSIGNED	-249
ERROR_INVALID_INTERPOLATION_SLAVE_AXES	-250
ERROR_INTERPOLATION_SLAVE_AXES_DUPLICATED	-251
ERROR_INVALID_SYNCHRONOUS_AXES	-252
ERROR_INVALID_INTERPOLATION_ARC_DIRECTION	-253
ERROR_INVALID_CONTINUE_INTERPOLATION_MOTION	-254
ERROR_INVALID_FRNET_PERIODIC_ENABLE	-255
ERROR_INVALID_FRNET_PERIODIC_FACTOR	-256
ERROR_INVALID_FRNET_SA_GROUP_ADDRESS	-257
ERROR_INVALID_FRNET_RA_GROUP_ADDRESS	-258
ERROR_INVALID_FRNET_ACCESS_MODE	-259
ERROR_INVALID_COMPARE_SOURCE	-260
ERROR_INVALID_MPG_SPEED	-261
ERROR_INVALID_CMPTRIG_ENABLE	-262
ERROR_INVALID_CMPTRIG_TRIGGER_MODE	-263
ERROR_INVALID_CMPTRIG_LOGIC_LEVEL	-264
ERROR_INVALID_CMPTRIG_PULSE_WIDTH	-265
ERROR_INVALID_SYNCH_ENABLE	-266
ERROR_INVALID_SYNCH_CONDITION	-267
ERROR_INVALID_SYNCH_ACTION	-268
ERROR_INVALID_EVENT_ENABLE	-269

ERRR_INVALID_INT_FACTOR	-270
ERRR_INVALID_FEEDBACK_SOURCE	-271
ERROR_HOME_STEP2_NOT_CONFIGURE	-272

Runtime Error:

ERROR_RUNTIME_BASE	-300
ERROR_OCCURS_IN_AXIS_X	-301
ERROR_OCCURS_IN_AXIS_Y	-302
ERROR_OCCURS_IN_AXIS_XY	-303
ERROR_OCCURS_IN_AXIS_Z	-304
ERROR_OCCURS_IN_AXIS_XZ	-305
ERROR_OCCURS_IN_AXIS_YZ	-306
ERROR_OCCURS_IN_AXIS_XYZ	-307
ERROR_OCCURS_IN_AXIS_U	-308
ERROR_OCCURS_IN_AXIS_XU	-309
ERROR_OCCURS_IN_AXIS_YU	-310
ERROR_OCCURS_IN_AXIS_XYU	-311
ERROR_OCCURS_IN_AXIS_ZU	-312
ERROR_OCCURS_IN_AXIS_XZU	-313
ERROR_OCCURS_IN_AXIS_YZU	-314
ERROR_OCCURS_IN_AXIS_XYZU	-315
ERROR_NO_MODULE_FOUND	-316
ERROR_MEMORY_MAP	-317
ERROR_MEMORY_UNMAP	-318
ERROR_ACCESS_VIOLATION_DATA_COPY	-319
ERROR_VARIABLE_PITCH_SET	-320
ERROR_INT_EVENT_ATTACH	-321
ERROR_INT_EVENT_DETACH	-322
ERROR_INT_EVENT_CREATE	-323
ERROR_CONFIG_IS_NEEDED	-324
ERROR_MOTION_NOT_COMPLETE	-325
ERROR_CONFLICT_WITH_SOFTLIMIT	-326
ERROR_CONFLICT_WITH_CMPTRIG	-327
ERROR_CONFLICT_WITH_VRING	-328
ERROR_CONFLICT_WITH_SYNCH_ACTION	-329
ERROR_ARC_DECELERATION_POINT_CALCULATE	-330
ERROR_REASSIGN_SYNCH_MODE_COMMAND	-331
ERROR_OVERLAP_EVENT_CREATE	-332

ERROR_INTERPOLATION_NOT_COMPLETE	-333
ERROR_CONTI_INTERP_INTERRUPTED	-334
ERROR_CONTI_INTERP_INCORRECT_CONFIG	-335
ERROR_CONTI_INTERP_NEXT_NOT_READY	-336
ERROR_SPEED_CHANGE_FAIL_IN_ACC_DEC	-337
ERROR_INVALID_OPERATION_IN_S_CURVE	-338
ERROR_NOT_CONSTANT_SPEED_IN_T_MOVE	-339
ERROR_MOTION_IS_COMPLETED	-340
ERROR_CONFLICT_WITH_INTERPOLATION_MOVE	-341
ERROR_HOLD_AXES_NOT_MATCH	-342
ERROR_BLOCK_OP_CONFLICT_WITH_CMPTRIG	-343
ERROR_CONFLICT_WITH_MPG	-344
ERROR_HOLD_AXES_NOT_RELEASE	-345
ERROR_ZPHASE_ACTIVE_AT_STEP3	-346
ERROR_BLOCK_OP_CONFLICT_WITH_DRV_HOLD	-347
ERROR_AXES_MOVE_CHECK	-360
ERROR_IOCTL_FAILED	-361
ERROR_UNDEFINED_EXCEPTION	-362
ERROR_CONFIG_FILE_LOAD	-370
ERROR_CONFLICT_IN_CONFIG_FILE	-371
ERROR_INVALID_FILE_HANDLE	-372
ERROR_ACCESS_REGISTRY_ACTIVE_ROOT	-375
ERROR_ACCESS_REGISTRY_ACTIVE_NUMBER	-376
ERROR_UNSUPPORTED_FUNCTION	-380