

Packing List

In addition to this guide, the package includes the MQ-7200M module:



MQ-7200M

MQ-7200M User Manual:

<https://www.icpdas.com/en/download/show.php?num=2675>

Technical Support

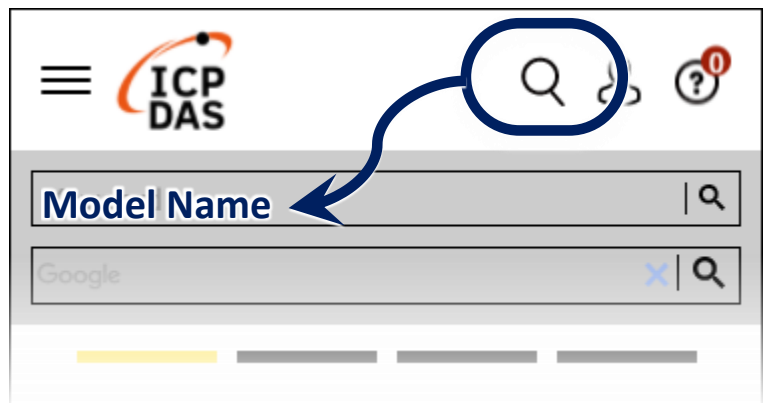
service@icpdas.com

www.icpdas.com

Resources

How to search for drivers, manuals and spec information on ICP DAS website.

- For Mobile Web



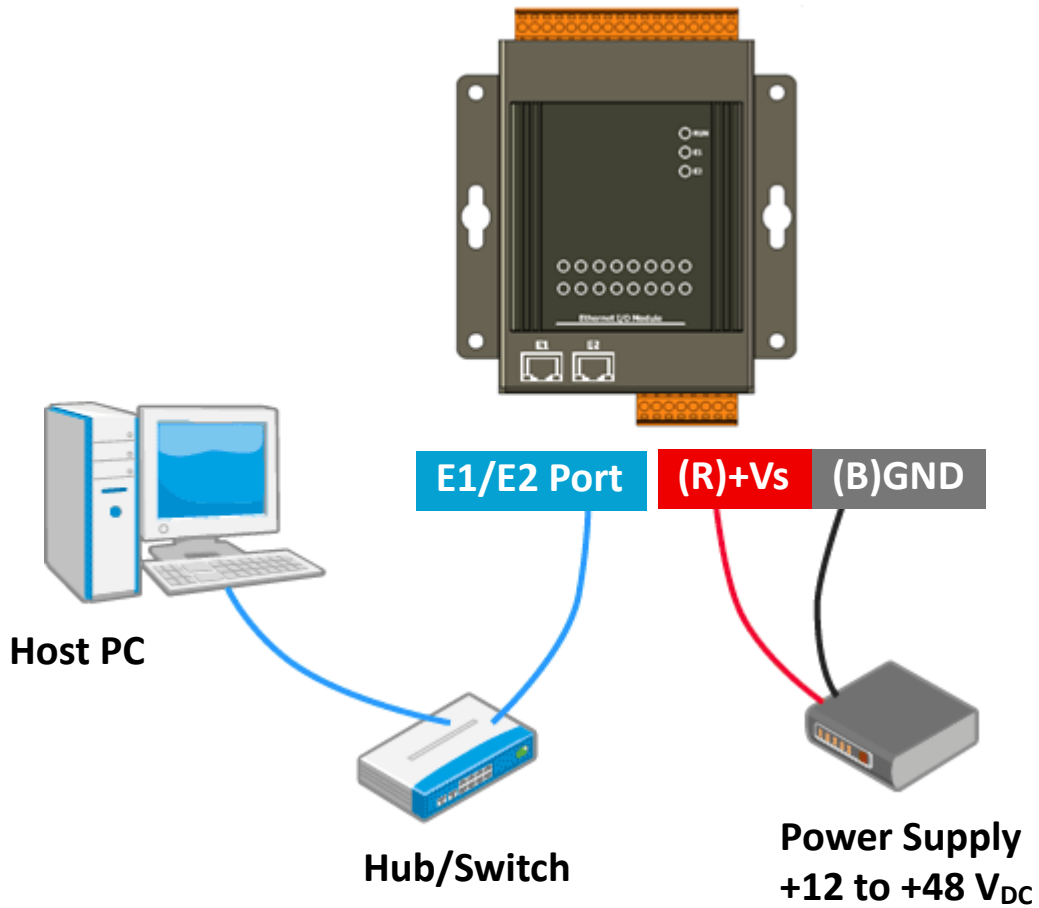
- For Desktop Web



1

Connecting to Network, PC and Power

The MQ-7200M is equipped with an RJ-45 Ethernet port for connection to an Ethernet hub/switch and PC.



2

Installing the MiniOS7 Utility

Step 1 : Get the MiniOS7 Utility

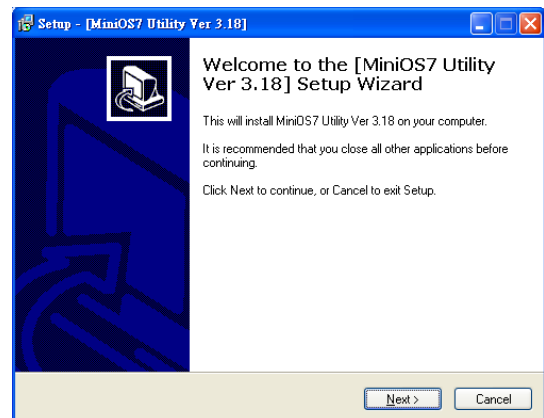
The MiniOS7 Utility can be obtained from web site:

<http://www.icpdas.com/en/download/show.php?num=1053>

Step 2 : Follow the prompts to complete the installation



After the installation has been completed, a new shortcut for MiniOS7 Utility will be created on the desktop.



3

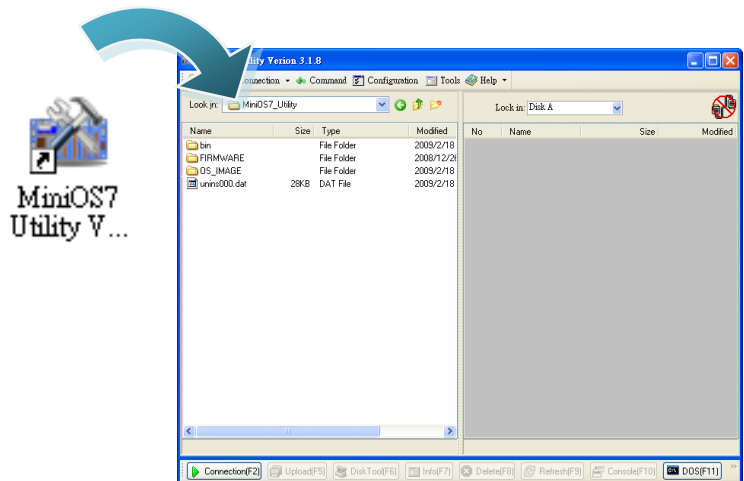
Assigning a New IP Address

The MQ-7200M comes with a default IP address; therefore, you must first assign a valid IP address for your network.

Item	Default
IP Address	192.168.255.1
Subnet Mask	255.255.0.0
Gateway	192.168.0.1

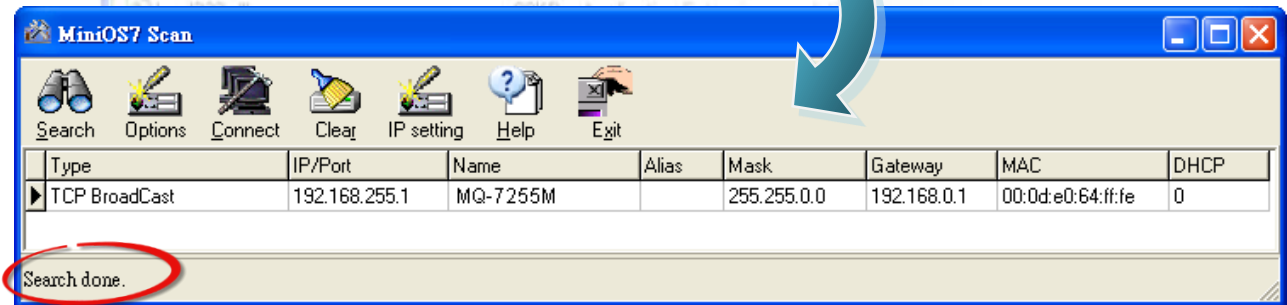
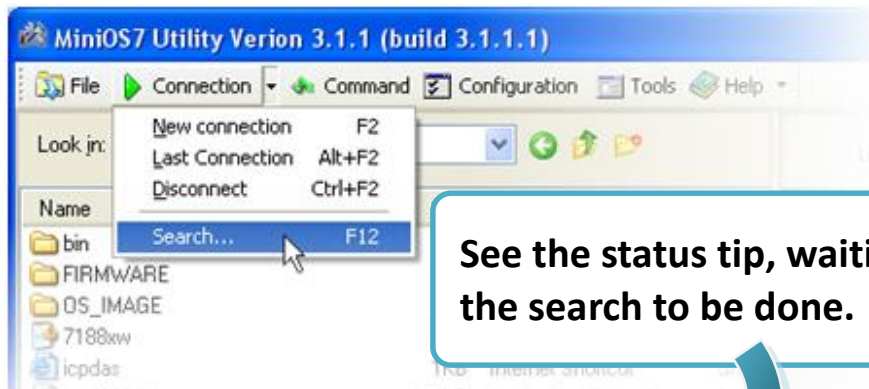
Step 1 : Run the MiniOS7 Utility

Double-click the MiniOS7 Utility shortcut on your desktop.

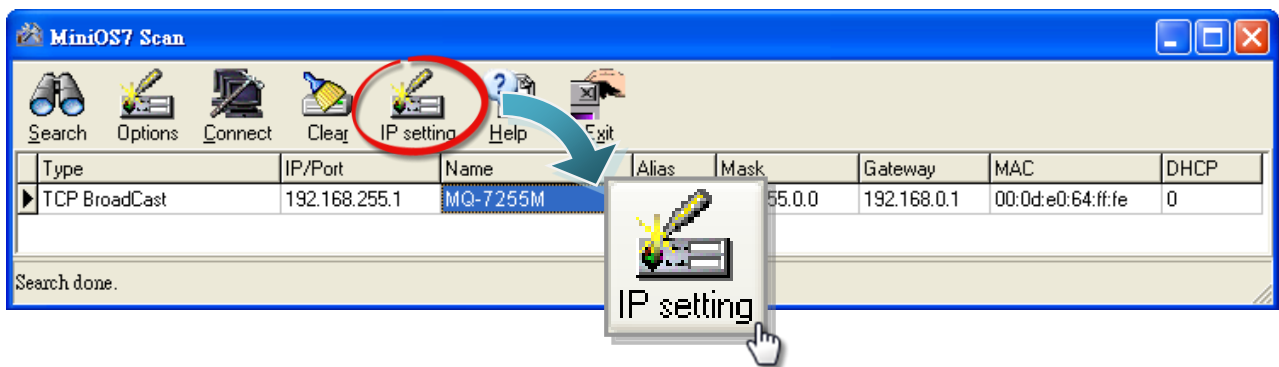


Step 2 : Find out your MQ-7200M on the network

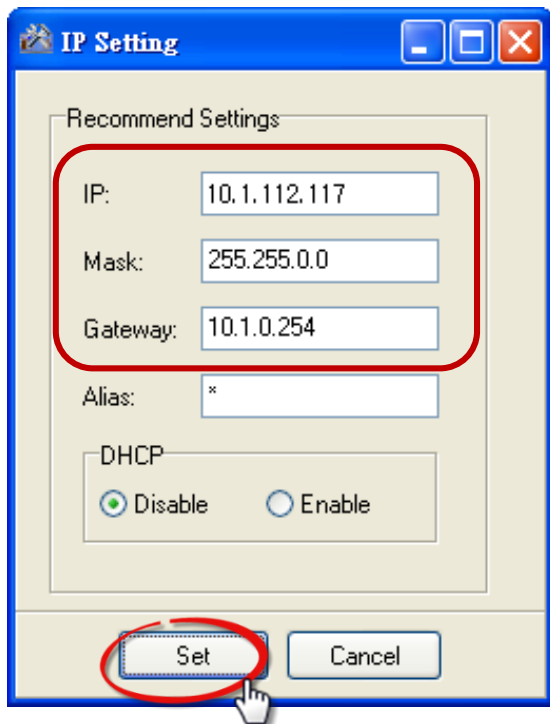
After pressing F12 or clicking on the “Search” option on the “Connection” menu, the MiniOS7 starts to search all MiniOS7 modules on the network, and the search result will be listed on the pop up MiniOS7 Scan dialog box.



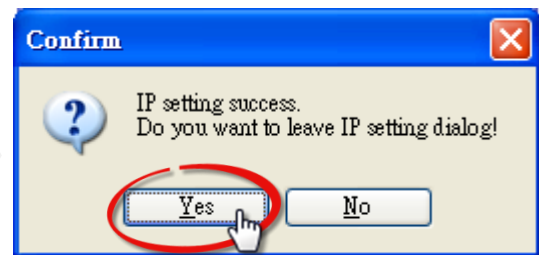
Step 3 : Highlight your module, and then click on the “IP setting” on the toolbar



Step 4 : Assign a new IP address and then click on the “Set” button



Step 5 : Choose “Yes” button



4

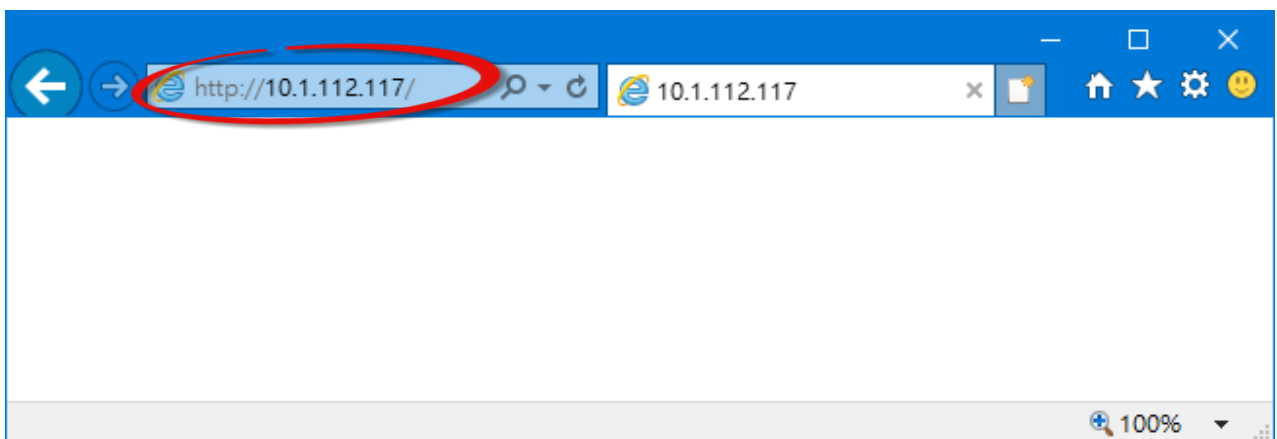
Logging in to the MQ-7200M

Step 1 : Open a browser

Please use a standard internet browser to view the MQ-7200M webpage, such as Mozilla Firefox or Internet Explorer...etc.

Step 2 : Enter the IP address for the MQ-7200M

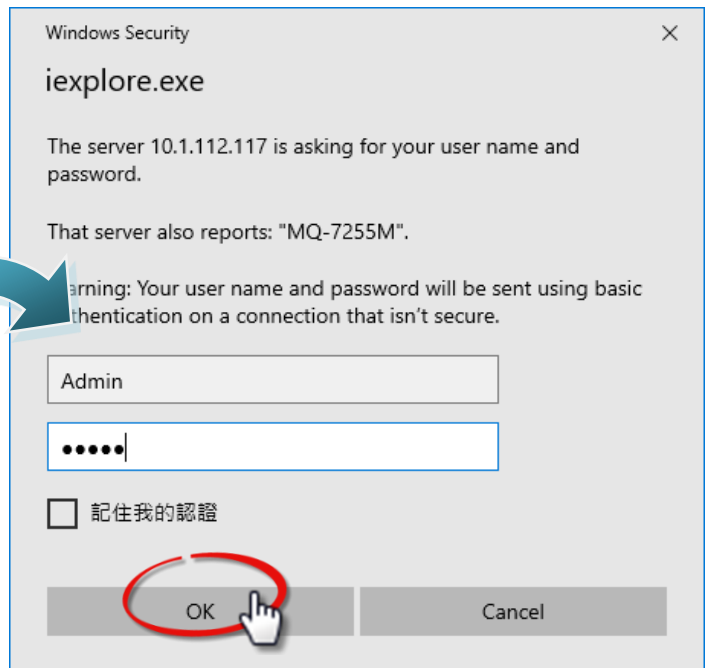
Input the IP address for the MQ-7200M and then press “Enter”.



If you haven't set a valid IP address for the MQ-7200M, please refer to “3. Assigning a New IP Address” to configure it.

Step 3 : Fill out the User name and Password

Item	Default
User name	Admin
Password	Admin



Step 4 : Welcome to MQ-7200M web site

