

Quick Start

for ECAT-2511-A/2511-B

English / Dec.2016/ Ver 1.0

1 Shipping Package

This shipping package contains the following items

1 x ECAT-2500 module

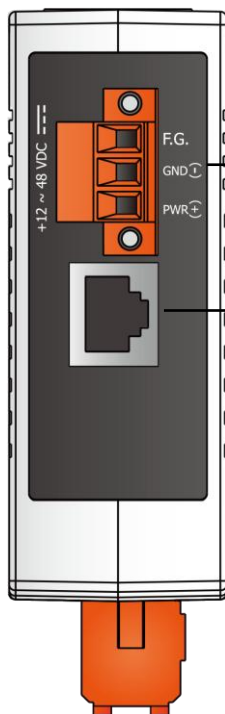
1 x Quick Start Guide (This Document)

Screw Driver x 1



2 Appearance

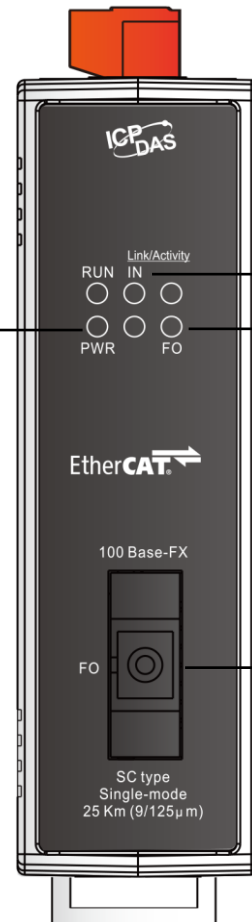
Top Panel



1. DC Power Input Connector

2. EtherCAT Interface
ECAT-2511-A: IN Port
ECAT-2511-B: OUT Port

Front Panel



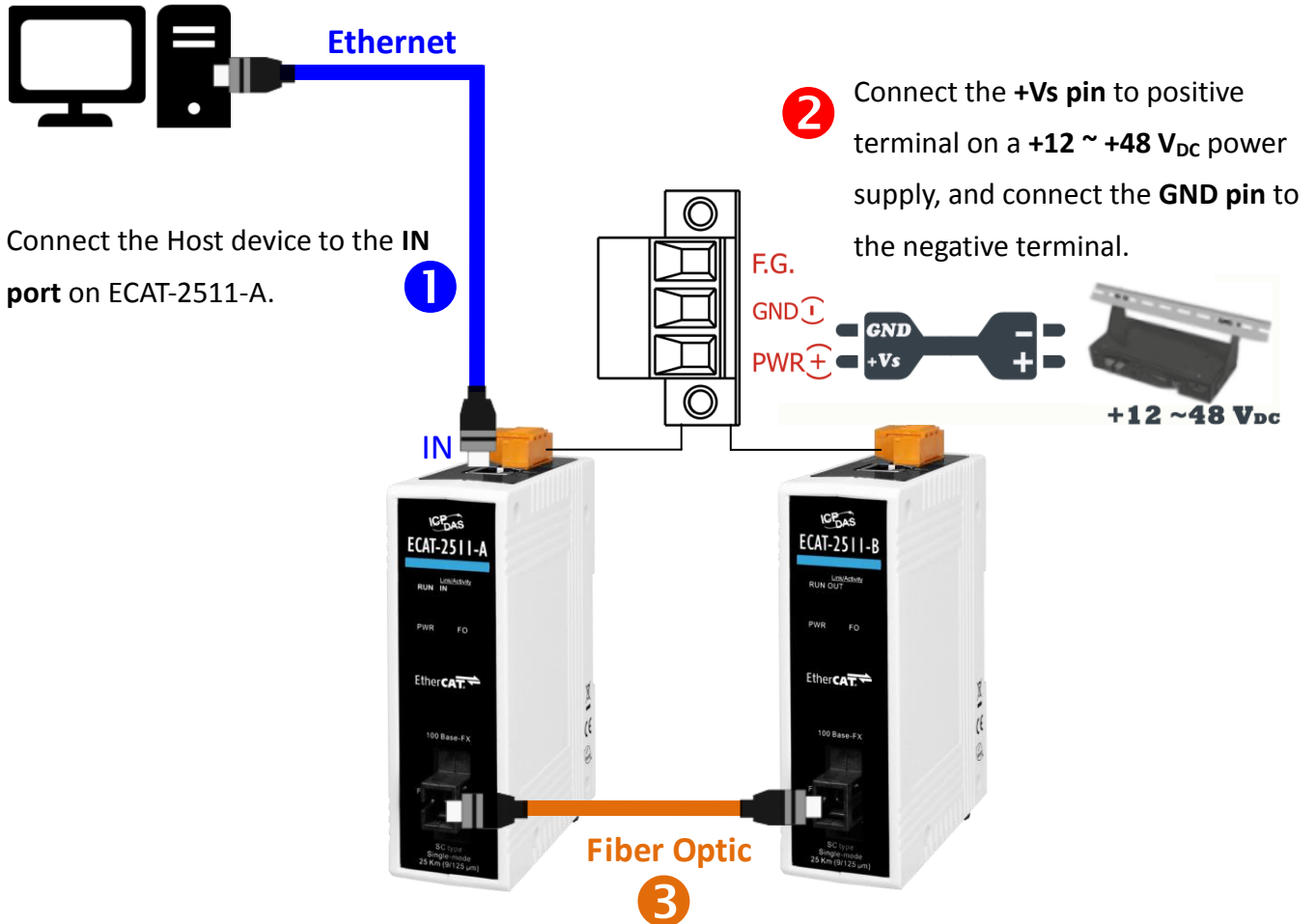
3. Status LED Indicator

4. PWR LED Indicator

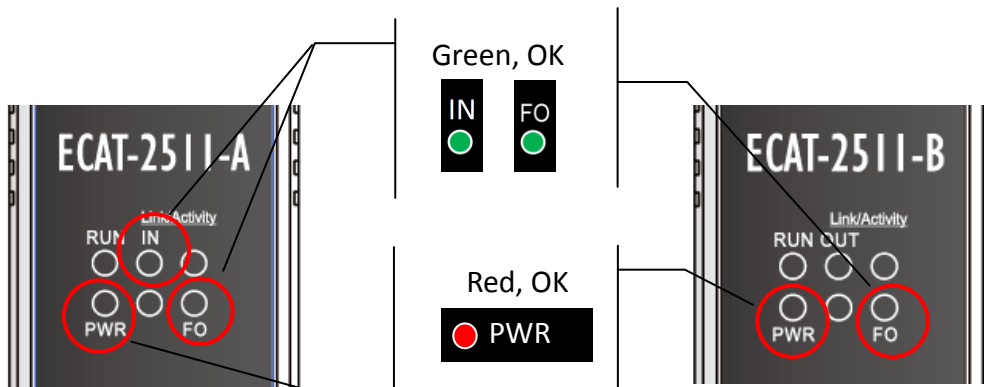
5. Fiber Port

3 Connecting the Power and Host device

Switch on module and connect it to an EtherCAT network



Verify the “PWR” , “IN” and “FO” LED indicators are blinking.

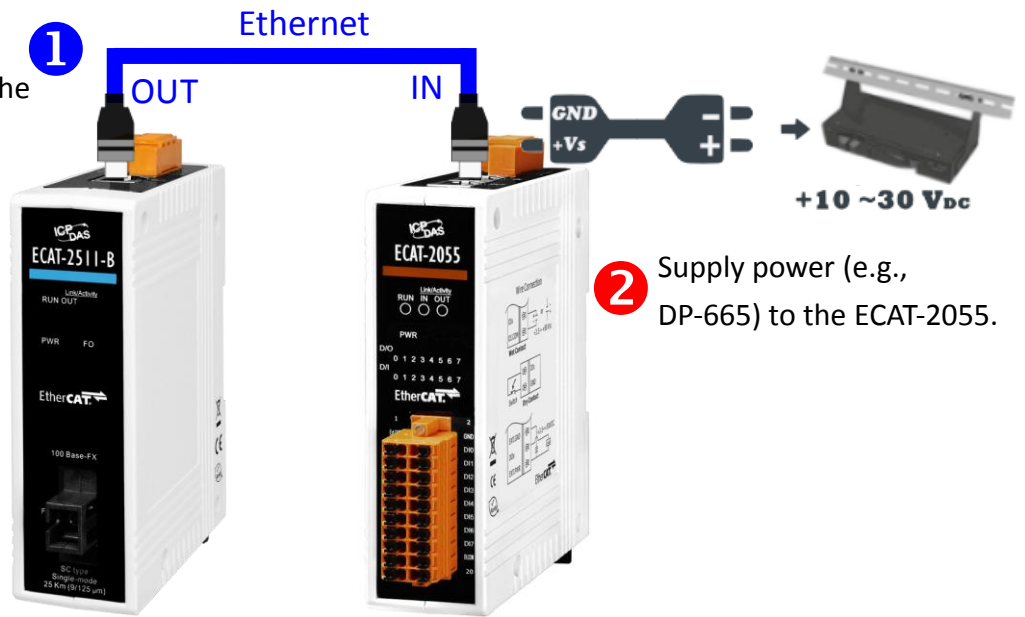


4 Connecting the Slave I/O Module

Connect the EtherCAT slave I/O module (e.g., the ECAT-2055) to **OUT** port on the ECAT-2511-B.

Note that the ECAT-2055 module is used as an example. For other ECAT-2000 series module, refer to the specific Quick Start Guide or user manual for that ECAT-2000 series module.

Connect the **IN** port on the ECAT-2055 to **OUT** port on the ECAT-2511-B.



Supply power (e.g., DP-665) to the ECAT-2055.

5 Search Modules

ESI file

The latest ESI file (ICPDAS ECAT-2511_2512_2513.xml) can be downloaded from ICP DAS website at

http://ftp.icpdas.com/pub/cd/fieldbus_cd/ethercat/slave/ecat-2000/software/

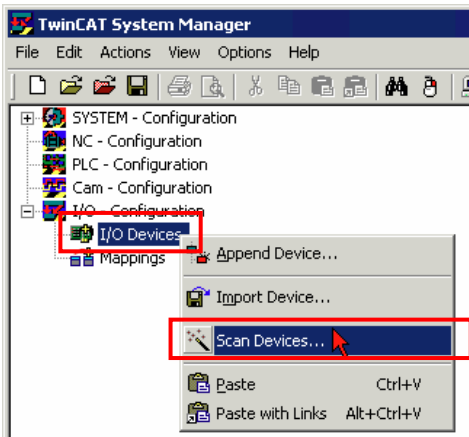


Install the ESI file

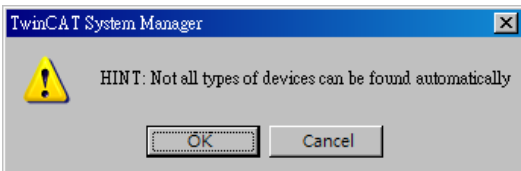
Copy the "ICPDAS ECAT-2511_2512_2513.xml" file to the Master Tools installation folder, as indicated in the table below.

Software	Default Path
Beckhoff EtherCAT Configuration	C:\EtherCAT Configurator\EtherCAT
Beckhoff TwinCAT 3.X	C:\TwinCAT\3.x\Config\Io\EtherCAT
Beckhoff TwinCAT 2.X	C:\TwinCAT\Io\EtherCAT

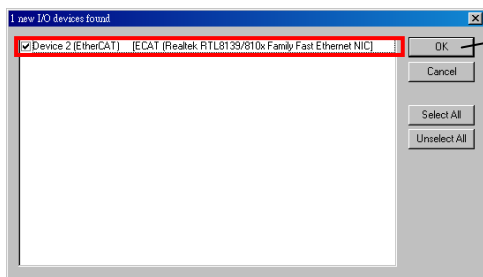
Run the EtherCAT Master software (Beckhoff TwinCAT 2.X)



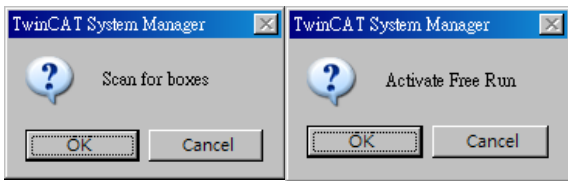
Switch on power
Execute the TwinCAT System Manager(Config mode)
I/O Devices-> Right click-> Scan Devices...



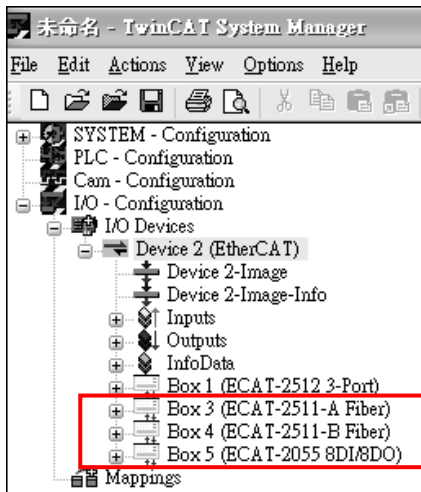
Click OK



Choose the correct network device which is connected to ECAT-2500



Click Yes to start scanning and click Yes to activate the free run mode for TwinCAT system manager



The ECAT-2511-A, ECAT-255-B and EtherCAT slave I/O module (e.g., ECAT-2055) are now shown in the TwinCAT System Manager.

Related Information

Product Page:

http://www.icpdas.com/root/product/solutions/industrial_communication/fieldbus/ethercat/ethercat_selection_guide.html

ESI file:

http://ftp.icpdas.com/pub/cd/fieldbus_cd/ethercat/slave/ecat-2000/software/

DP-665 (Optional) Product Page:

http://www.icpdas.com/products/Accessories/power_supply/dp-665.htm