



# EC2-P16C16 series Quick Start

v1.0, Mar. 2023

## Packing List

In addition to this guide, the package includes the following items:



EC2-P16C16

## Technical Support

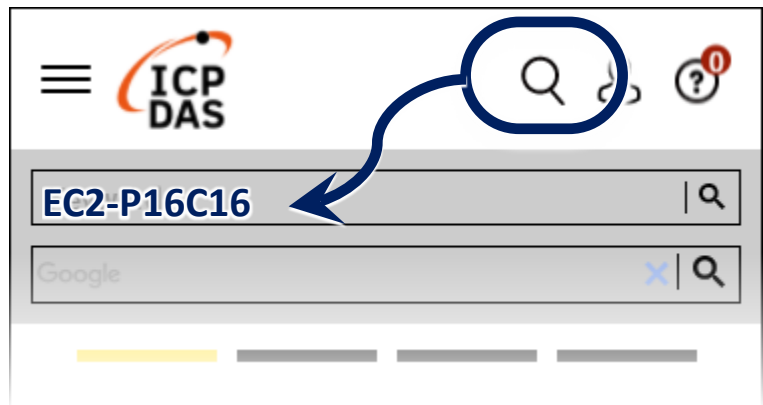
[service@icpdas.com](mailto:service@icpdas.com)

[www.icpdas.com](http://www.icpdas.com)

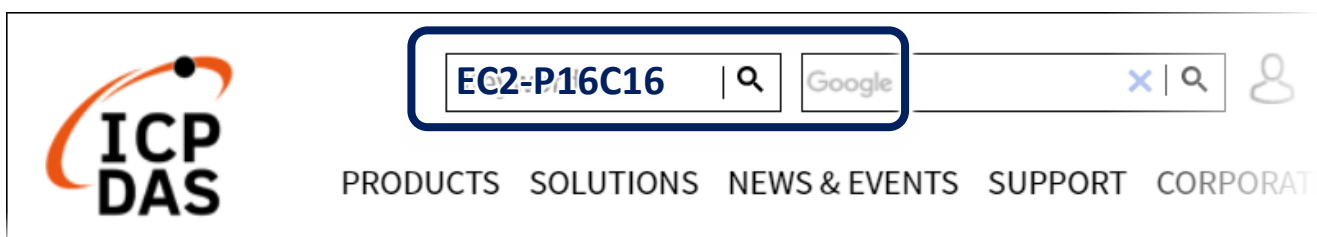
## Resources

How to search for ESI, manuals and spec information on ICP DAS website.

- For Mobile Web



- For Desktop Web



## Related Information

For more detailed information related to the manual, hardware manual:

<http://www.icpdas.com/en/download/index.php?model=EC2-P16C16>

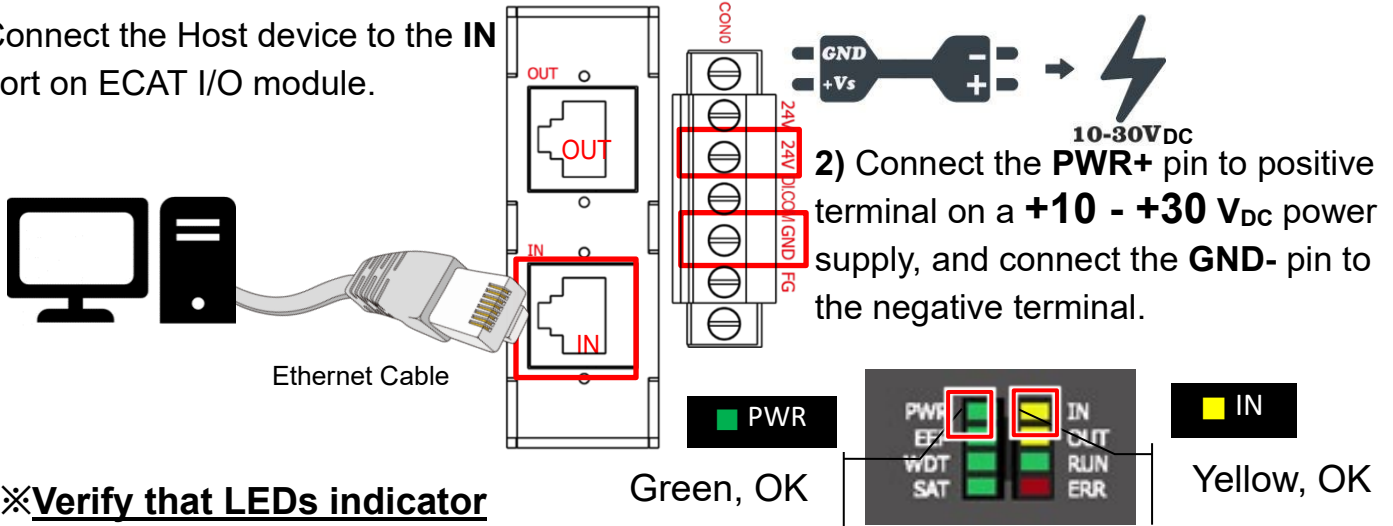
# 1 Connecting the Power and Host

※Switch on module and connect it to an EtherCAT network

**! NOTE:**

Attaching an ESC directly to an office network will result in network flooding, since the ESC will reflect any frame – especially broadcast frames – back into the network (broadcast storm).

1) Connect the Host device to the **IN** port on ECAT I/O module.



※Verify that LEDs indicator

# 2 Search Modules

Download and Unzip file to get ESI file

The latest ESI file (ECx-DIO....xml) can be downloaded from website at

[ECx-DIO ESI XML.zip](#)

Unzip the “ECx-DIO....zip” to get the “ECx-DIO....xml” ESI file(XML format)

Install the ESI file

Copy the “ECx-DIO....xml” file to the Master Tools installation folder, as indicated in the table below.

Software	Default Path
Beckhoff EtherCAT Configuration	<a href="#">C:\EtherCAT Configurator\EtherCAT</a>
Beckhoff TwinCAT 3.X	<a href="#">C:\TwinCAT\3.x\Config\lo\EtherCAT</a>
Beckhoff TwinCAT 2.X	<a href="#">C:\TwinCAT\lo\EtherCAT</a>

Run the EtherCAT Master software (Beckhoff TwinCAT 2.X)

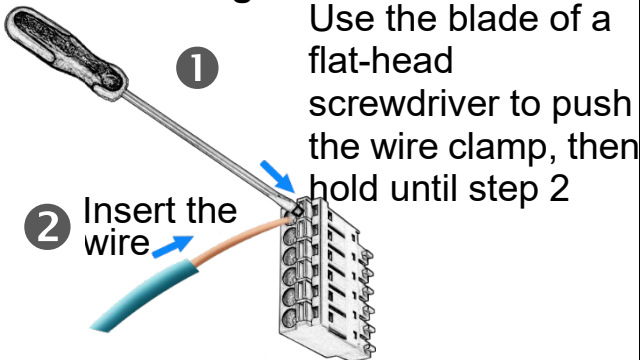
Switch on power and execute the TwinCAT System Manager (Config mode)

1. I/O Devices → Right click → Scan Devices...
2. Click "OK" button
3. Choose the correct network device which is connected to Module and click "OK" button
4. Click "OK" to start scanning Click "OK" to activate the free run mode for TwinCAT system manager
5. In the left-hand window, Module is now shown in the TwinCAT system Manager

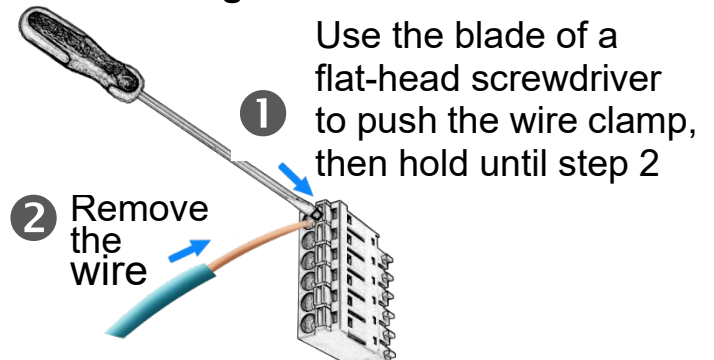
# 3 Wiring to the Connector

## ➤ Wiring Tip

### Connecting the wire



### Removing the wire



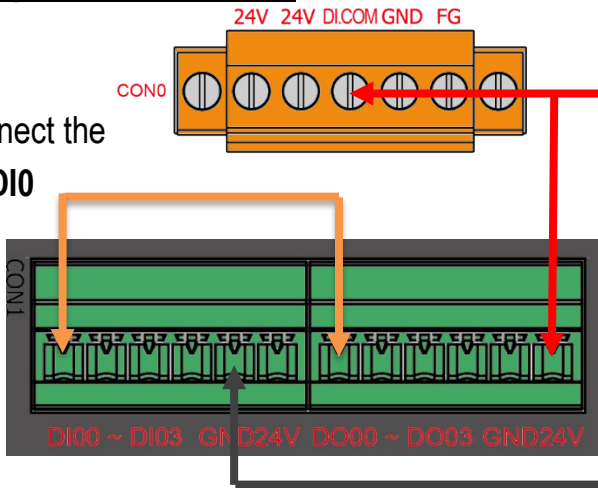
## ➤ Wire Diagrams

	Readback as 1 (+10 ~ +40 VDC)	Readback as 0 (Open or < 4VDC)
Sink		

Source		
DI	Readback as 1 (Close to GND)	Readback as 0 (Open)
Dry		
DO	Readback as 1 (ON State)	Readback as 0 (OFF State)
Driver Relay		
Resistance Load		

### ➤ Wiring the DO0 to DI0

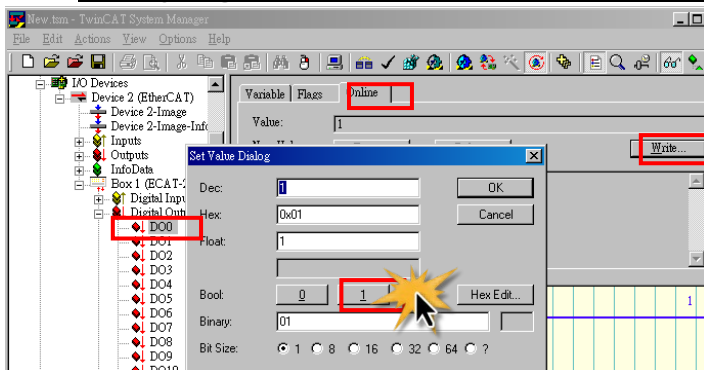
➊ Connect the DO0 to DI0



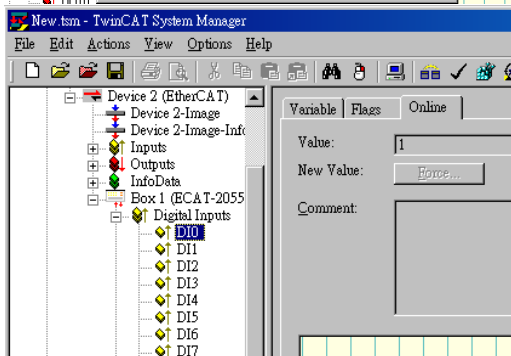
➋ Connect +24V external power supply to the 24V and DI.COM

➌ Connect the GND on external power supply

### ➤ Verifying the DO and DI functionality



In the left-hand of the window, click on the DO0. In the right-hand of the windows, click the online. Click Write. Click 1 (Configure DO0).



In the left-hand of the window, click DI0. In the right-hand of the windows, click the online. Check Value is 1.