



EC4-AD8 series Quick Start

v1.0, Jun. 2025

Packing List

In addition to this guide, the package includes the following items:



EC4-AD8

Technical Support

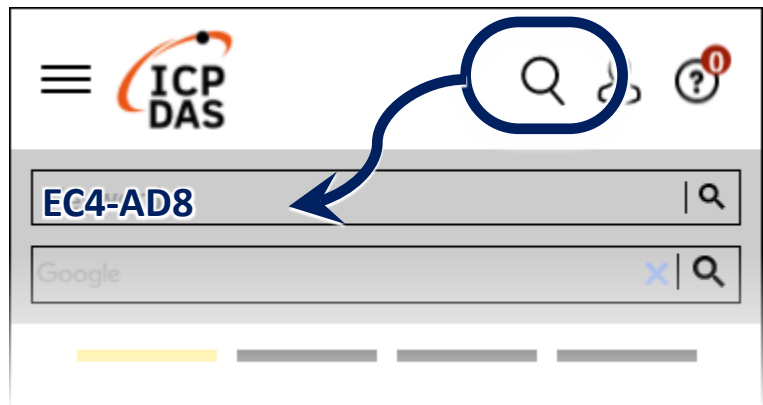
service@icpdas.com

www.icpdas.com

Resources

How to search for ESI, manuals and spec information on ICP DAS website.

- For Mobile Web



- For Desktop Web



Related Information

For more detailed information related to the manual, hardware manual:

<http://www.icpdas.com/en/download/index.php?model=EC4-AD8>

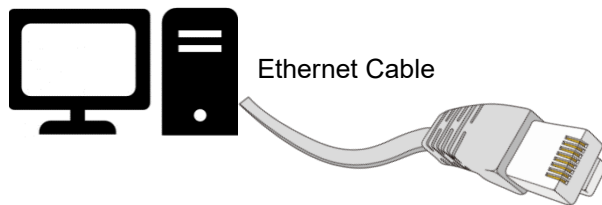
1 Connecting the Power and Host

※Switch on module and connect it to an EtherCAT network

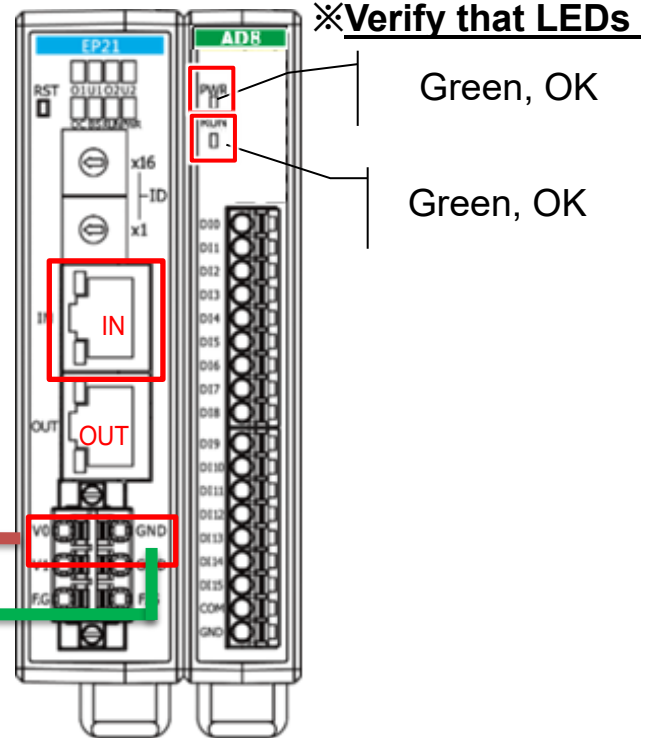
! NOTE:

It is recommended to use a dedicated network card and avoid connecting to network to prevent network storms(broadcast storm).

- 1) Connect the Host device to the IN port on module.



- 2) Connect the PWR+ pin to positive terminal on a +10 - +30 V_{DC} power supply, and connect the GND- pin to the negative terminal.



※Verify that LEDs

Green, OK

Green, OK

2 Search Modules

Download and Unzip file to get ESI file

The latest ESI file (ECx-DIO....xml) can be downloaded from website at

 [EC4-IO ESI XML.zip](#)

Unzip the “ECx-IO....zip” to get the “EC4-IO....xml” ESI file(XML format)

Install the ESI file

Copy the “EC4-IO....xml” file to the Master Tools installation folder, as indicated in the table below.

Software	Default Path
Beckhoff EtherCAT Configuration	C:\EtherCAT Configurator\EtherCAT
Beckhoff TwinCAT 3.X	C:\TwinCAT\3.x\Config\Io\EtherCAT
Beckhoff TwinCAT 2.X	C:\TwinCAT\Io\EtherCAT

Run the EtherCAT Main software (Beckhoff TwinCAT 2.X)

Switch on power and execute the TwinCAT System Manager (Config mode)

1. I/O Devices → Right click → Scan Devices...

2. Click "OK" button

3. Choose the correct network device which is connected to Module and click "OK" button

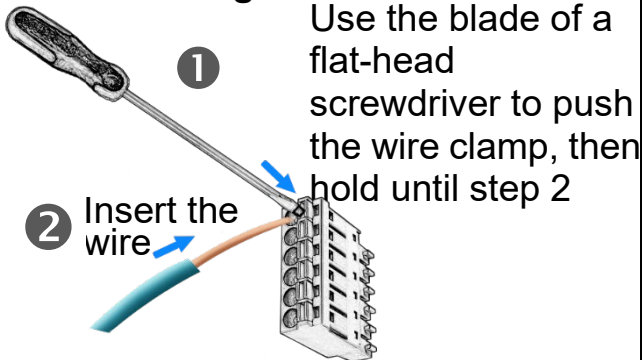
4. Click "OK" to start scanning Click "OK" to activate the free run mode for TwinCAT system manager

5. In the left-hand window, Module is now shown in the TwinCAT system Manager

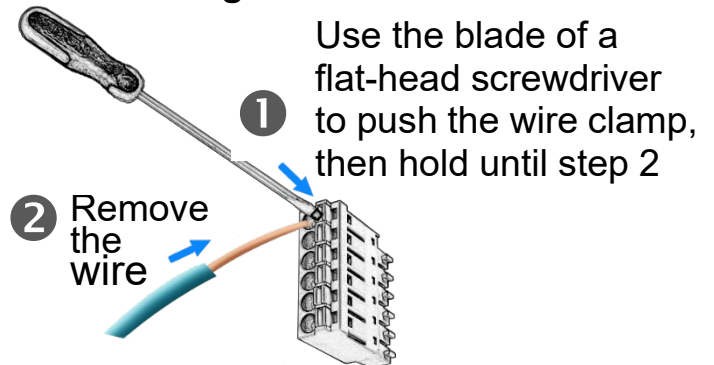
3 Wiring to the Connector

➤ Wiring Tip

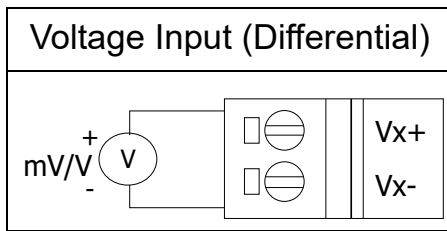
Connecting the wire



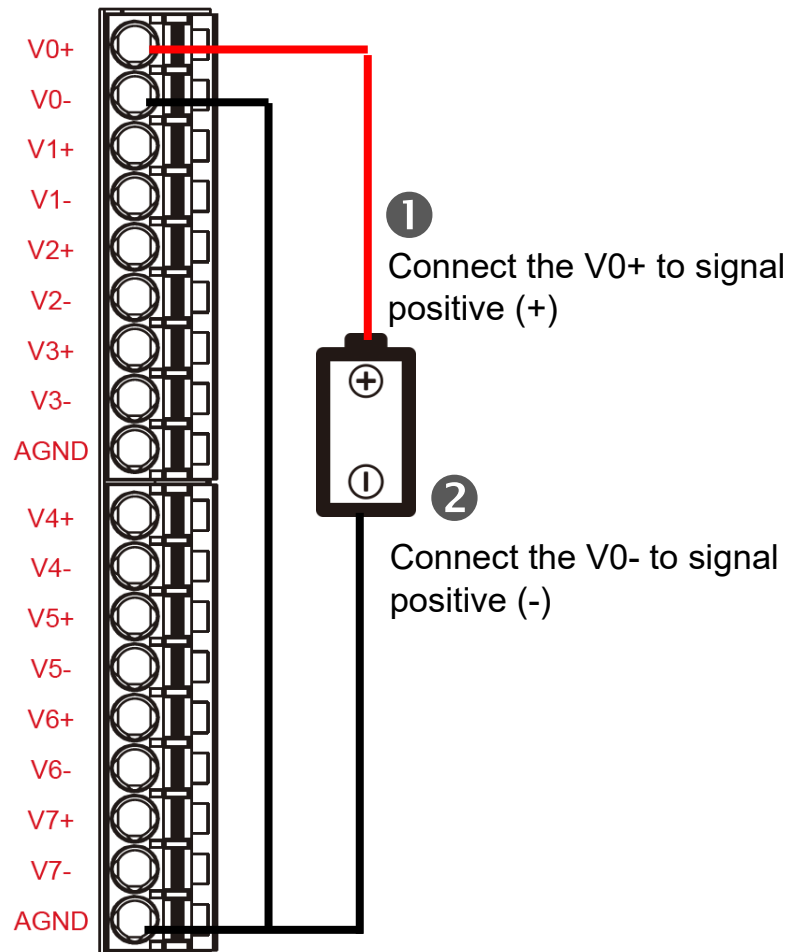
Removing the wire



➤ Wire Diagrams



➤ Wiring the AI0



➤ Verifying the AI Functionality

未命名 - TwinCAT System Manager

File Edit Actions View Options Help

SYSTEM - Configuration

PLC - Configuration

I/O - Configuration

I/O Devices

Device 3 (EtherCAT)

Device 3-Image

Device 3-Image-Info

Inputs

Outputs

InfoData

Device 3 (EtherCAT-2011H 16S.E./8Diff Ch. Ana.)

AI0

Name	Online	Type	Size
Status	0x8000 (32768)	Status_4096	2.0
Value	0x0D2E <1.030>	INT	2.0

2. In the right-hand window, check the voltage value in the "Value" item.

1. Click "AI0" in the left-hand window.