



ACS-10V-MF Quick Start

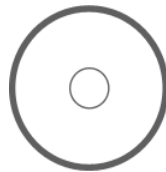
v1.0, November 2017

What's in the box?

In addition to this guide, the package includes the following items:



ACS-10V-MF



CD



Cables

CA-010 x1 、 CA-011 x1 、 CA-012 x2 、
CA-013 x1 、 CA-014 x1

1 Pin assignments

Connector Type		Pin Assignment								Description
CN1		GND				VDC				Power (+10V~+30 VDC)
CN2		DI0	G	DI1	G	DI2	G	DI3	G	DI0(Door position detection) DI1(Electric lock trigger) DI2/3(n/a) (Digital Input, Dry Contact)
CN3		COM		NO		NC				Anti-sabotage detection (Relay Output)
CN4		NC								Electronic lock control (Relay Output)
		COM								
		NO								
CN5		NC								Door abnormal alarm output (Relay Output)
		COM								
		NO								
CN6		CAN_L	CAN_H	D+	D-					CAN/RS-485 (Communication Interface)

2 Hardware Installation

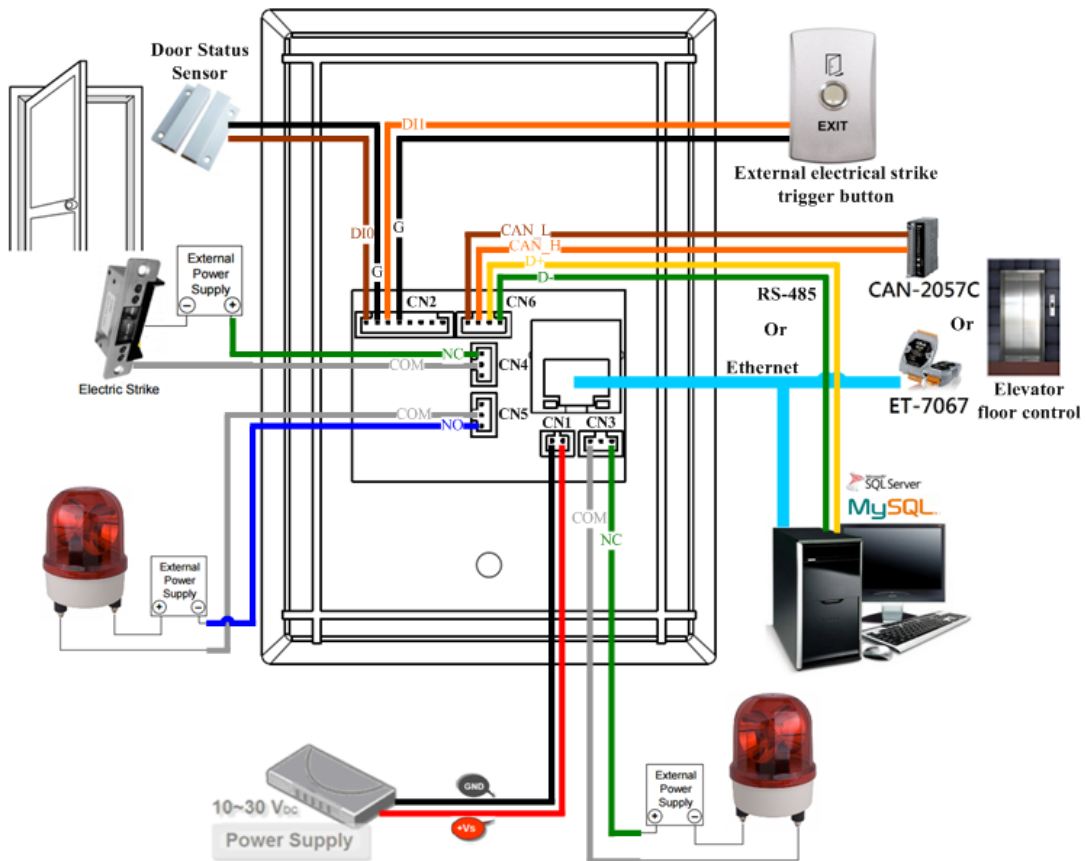


Figure 1: Wiring diagram

Input Type	ON	OFF
Relay Contact (Dry)		
Open Collector (Dry)		
Output Type	Relay ON	Relay OFF
FormC		

Figure 2: Wire connection

3 Software Installation

Before use, associated software configuration, the steps described as follows :

Connect to host PC, network and power supply

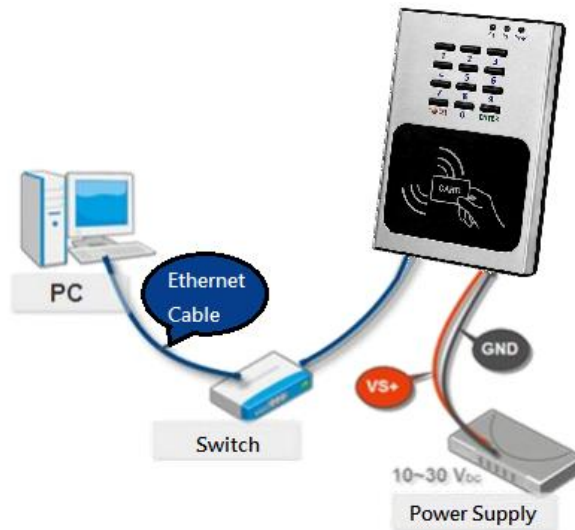


Figure 3: Host PC, Network and Power supply

01. Make sure that the network settings on the PC are properly configured and functioning properly
 - a. Entry the IP address as "192.168.0.x", where "x" is a number Between 1 and 254 except 1, Subnet mask as "255.255.0.0". Finally, press "OK" button.

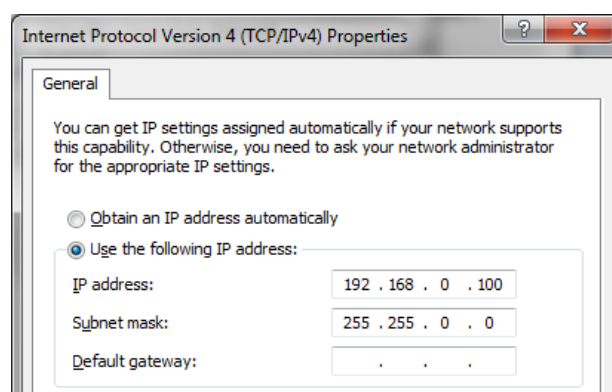


Figure 4: IP address configuration of Computer

02. Make sure that Windows Firewall or antivirus firewall is properly configured to allow incoming connections, or temporarily disable these features

Execute access control setting program (ACS Config Utility)

01. ACS Config Utility can be obtained either from the companion CD or from the ICP DAS FTP site at

<http://ftp.icpdas.com/pub/cd/ba-ha/acs/acs-10V-mf-tc/software/utility/>

02. Click the "Search" button to search for your module

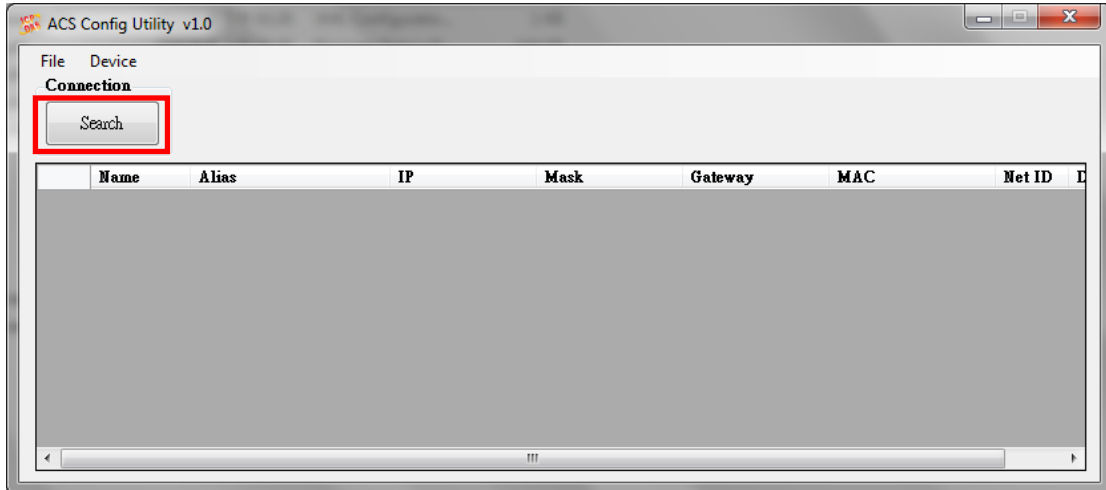


Figure 5: The main screen of the ACS Config Utility

03. Select network connection interface of PC

04. Click the "OK" button to wait for the search to complete

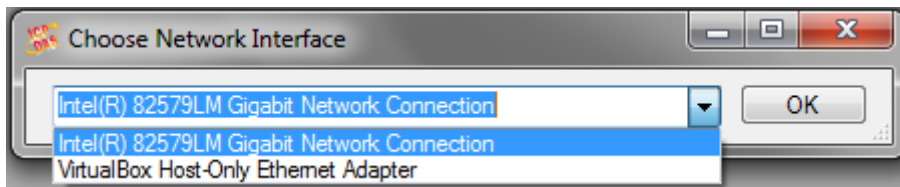


Figure 6: Select network connection interface

05. Display the device search list and select the module name

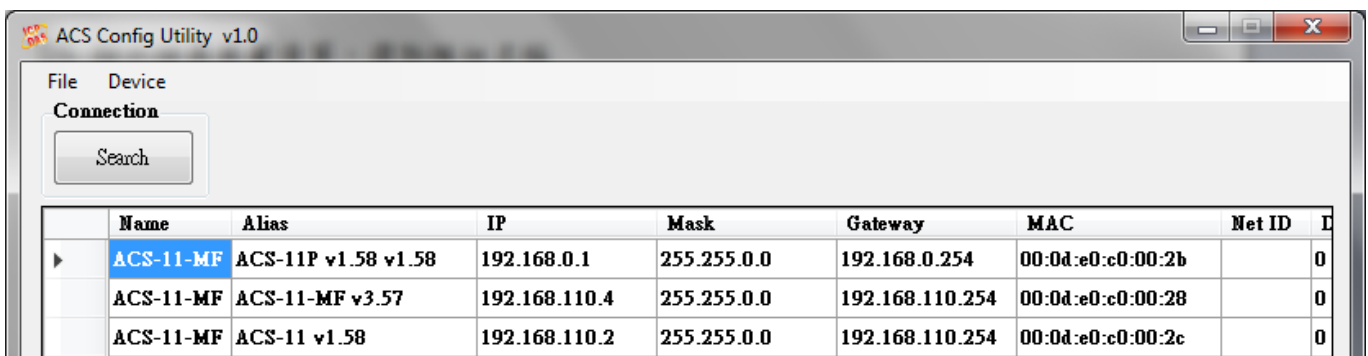


Figure 7: Device search list

Add Mifare card number and Pass password

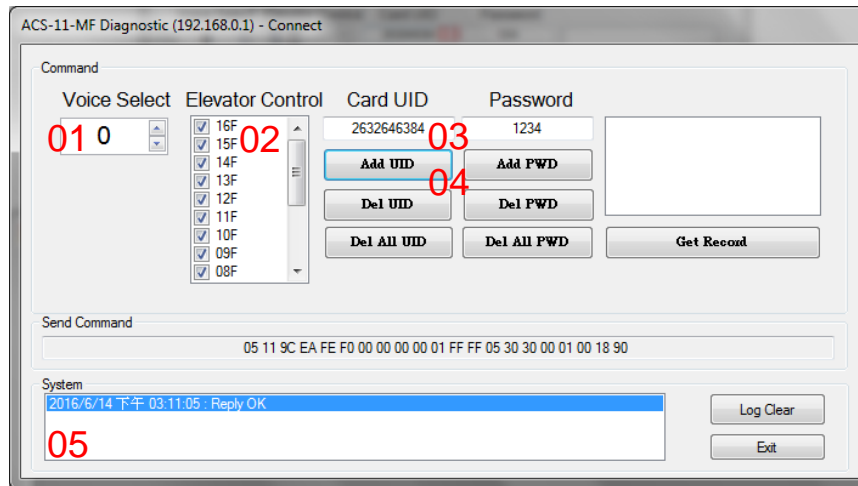


Figure 8: Add card number and password setting screen

A. Add Mifare card number

01. Select the voice number (0~39): 0
02. Floor control options: Check (enable) / Uncheck (disable)
03. Fill in the UID of card: 2632646384(4 Byte or 7 Byte UID)
04. Click the "Add UID" button
05. Display "Reply OK"; make sure to add the UID successfully

B. Add pass password

01. Select the voice number (0~39): 0
02. Floor control options: Check (enable) / Uncheck (disable)
03. Fill in the pass password: 1234(4 digits number)
04. Click the "Add PWD" button
05. Display "Reply OK"; make sure to add the pass password successfully

C. Mifare card induction test

01. Place the Mifare card close to the ACS-xxx-MF
02. ACS-xxx-MF will read the card UID and record the pass information
03. ACS-xxx-MF will open the electronic lock relay (CN4) and play the specified voice

D. Pass password test

01. Enter the pass password in the keypad area, and press the "OK" button
02. ACS-xxx-MF will read the pass password and record the pass information

03. ACS-xxx-MF will open the electronic lock relay (CN4) and play the specified voice

E. Read the pass records

01. Click the "Get Record" button to read a pass record

02. Display Card number [2632646384] / Pass password [1234] - Status [Pass] and Time [Year/Month/day Hour:Minute:Second]

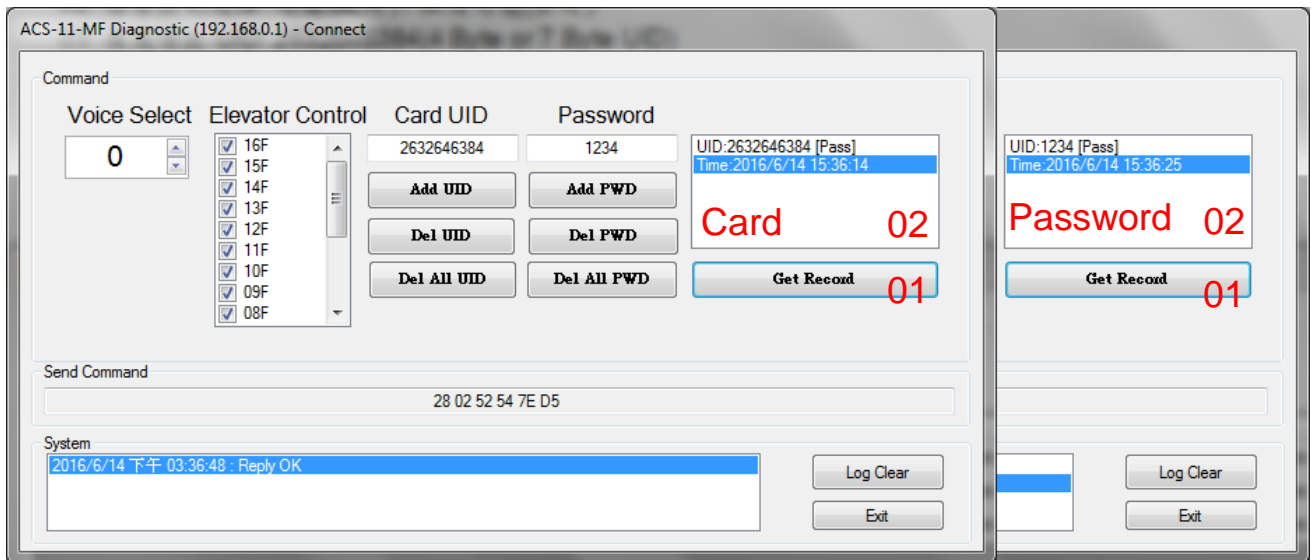


Figure 9: Read screen of pass records

Delete Mifare card UID and Pass password

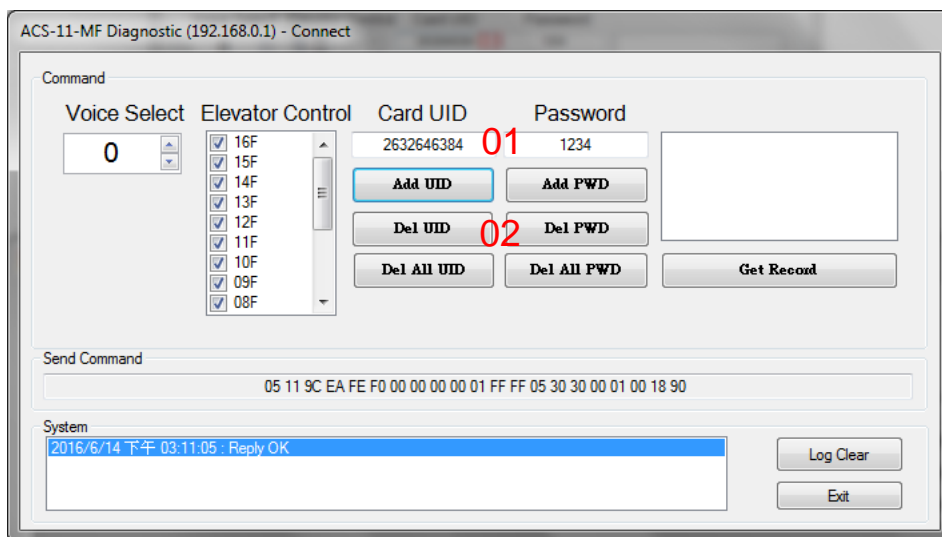


Figure 10: Delete card number and password setting screen

A. Delete Mifare card UID

01. Fill in the UID of card: 2632646384(4 Byte or 7 Byte UID)

02. Click the "Del UID" button

03. Display "Reply OK"; make sure to delete the UID successfully

B. Delete pass password

01. Fill in the pass password: 1234(4 digits number)
02. Click the "Del PWD" button
03. Display "Reply OK"; make sure to delete the pass password successfully

C. Mifare card induction test

01. Place the Mifare card that has deleted the card number close to the ACS-xxx-MF
02. ACS-xxx-MF will read the card UID and record the pass information
03. ACS-xxx-MF will play "Invalid Card" voice

D. Pass password test

01. Enter the pass password in the ACS-xxx-MF keypad area, and press the "OK" button
02. ACS-xxx-MF will read the pass password and record the pass information
03. ACS-xxx-MF will play "Invalid Password" voice

E. Read the pass records

01. Click the "Get Record" button to read a pass record
02. Display Card number [2632646384] / Pass password [1234] 、 Status [Denied] and Time [Year/Month/day Hour:Minute:Second]

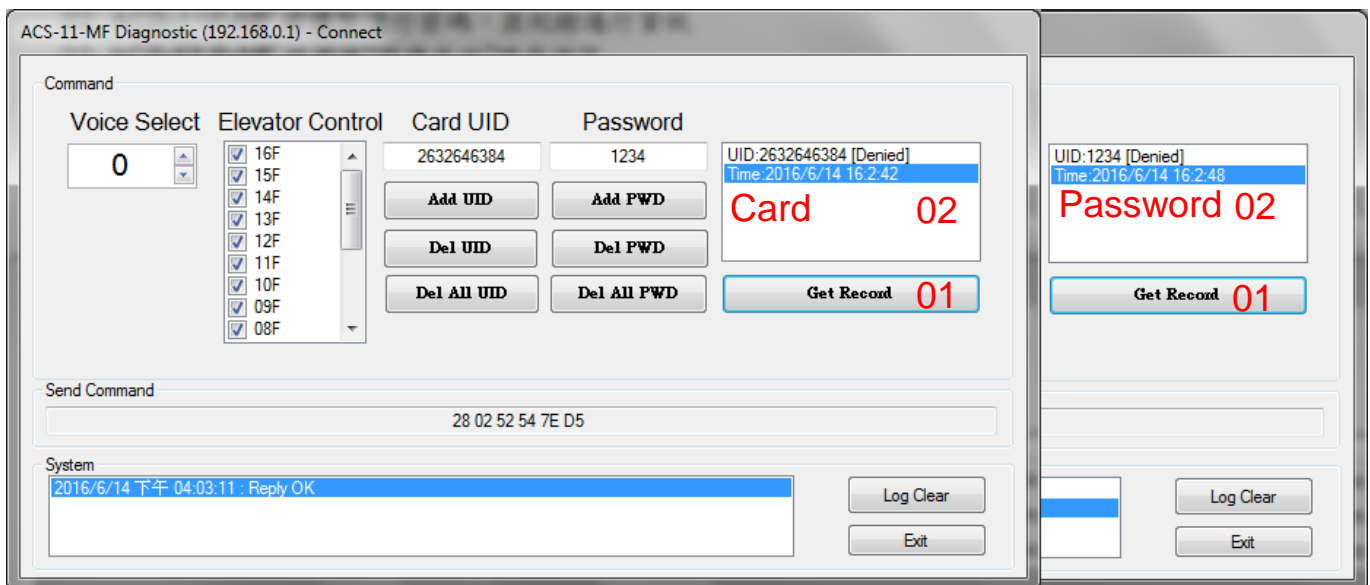
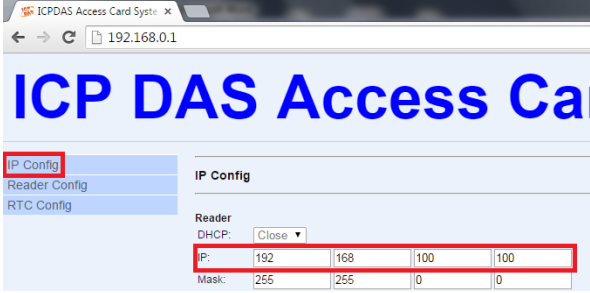


Figure 11: Read screen of pass records

4 Troubleshooting

Item	Problem Description	Solution
1	Power Failure (PWR LED Off)	1. Please return to the ICP DAS for inspection and repair
2	Cards can not be used	1. Make sure cards support Mifare S50 standard (ISO 14443-A) 2. EM and HID cards are not supported
3	How to find out IP address of ACS-xxx-MF?	<p>1. Entry the default IP operation mode Step1. Press and hold the No. 1 key Step2. Reset the power of ACS-xxx-MF Step3. Now the PWR led flashes and IP address is "192.168.0.1" Step4. Enter the settings web page then find out IP address</p>  <p>2. Use eSearch Utility Step1. Launch eSearch.exe Step2. Press "Search Servers" button then find out IP address</p> 