



Features

- InduSoft runtime inside
- PXA 270 CPU (32-bit & 520 MHz)
- VP-4139 with 10.4" TFT LCD
- VP-25W9 with 5.7" TFT LCD & 6 Keys Rubber Keypad
- 64-bit Hardware Serial Number for Software Protection
- I/O Expansion Ability: Ethernet, RS-232/422/485, FRnet, CAN bus
- Built-in one Ethernet Port, 2 Serial Ports (RS-232 & RS-485)
- IP65 Compliant Front Panel
- Audio with Earphone-Out
- 3 Slots for High Profile I/O Modules
- Dual Battery Backup SRAM (512 KB)
- Operating Temperature: -20 ~ +70°C



Introduction

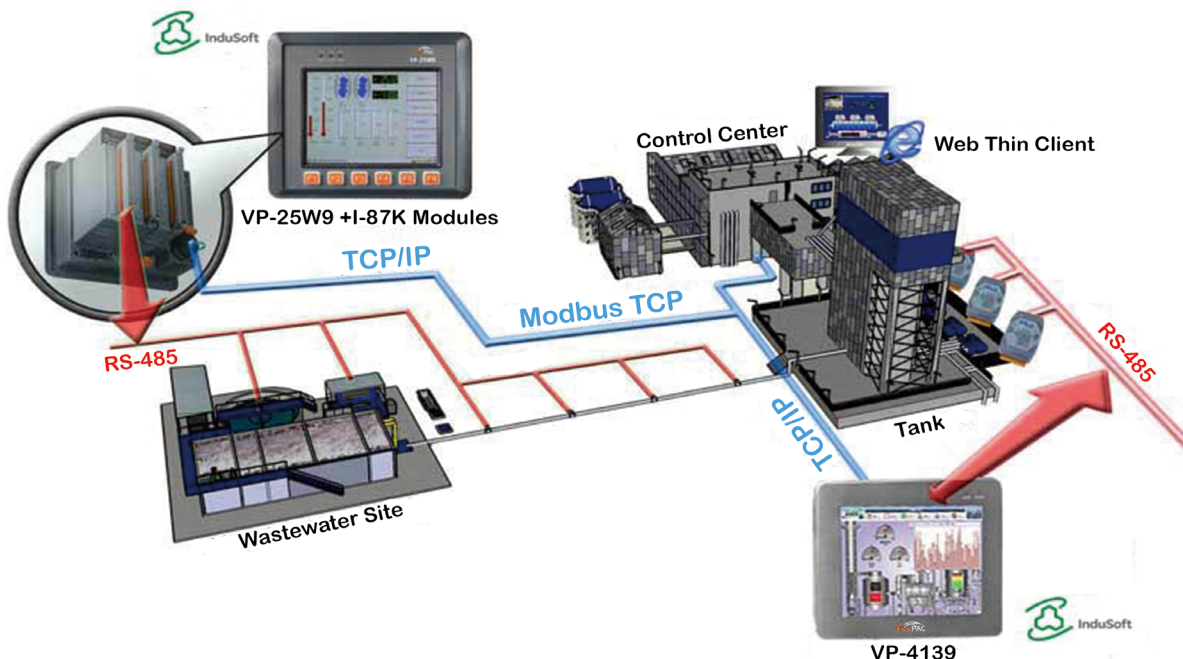
ViewPAC-25W9/ViewPAC-4139 is the new generation WinCE based PAC from ICP DAS. ViewPAC combines WinPAC, graphic display and keypad in one unit. It equips a PXA270 CPU (520MHz) running Windows CE.NET 5.0 operating system, variant connectivities (USB, Ethernet, RS-232/485), 3 slots to expand I/O modules, 5.7"/10.4" TFT LCD and a rubber keypad.

Its operating system, Windows CE.NET 5.0, has many advantages, includes hard real-time capability, small core size, fast boot speed, interrupt handling at a deeper level, achievable deterministic control and low cost. The VP-25W9 also features with the powerful InduSoft Web Studio. InduSoft is the most powerful, integrated collection of e-automation development tool that includes all the building blocks needed to develop Human Machine Interface (HMI) and Supervisory Control and Data Acquisition (SCADA) systems.

Compared to traditional IPC + PLC solutions, ViewPAC reduces overall system cost, space and gives you all the best features of IPC and PLC.

Applications

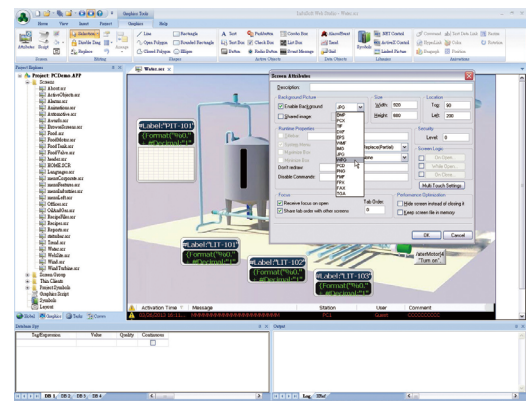
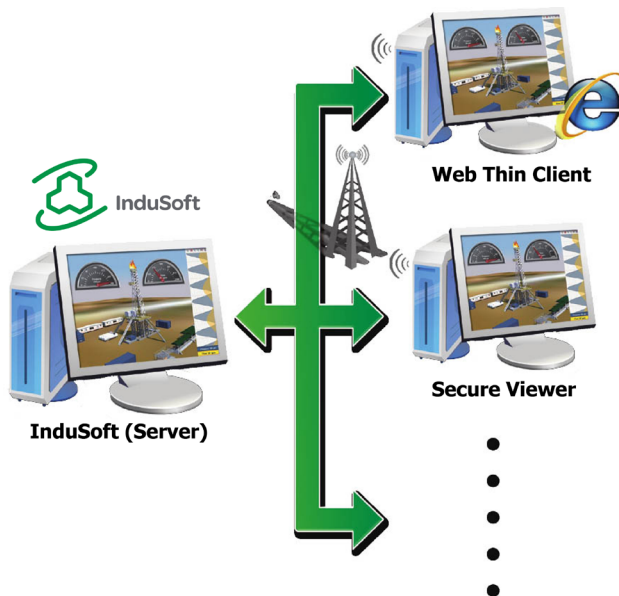
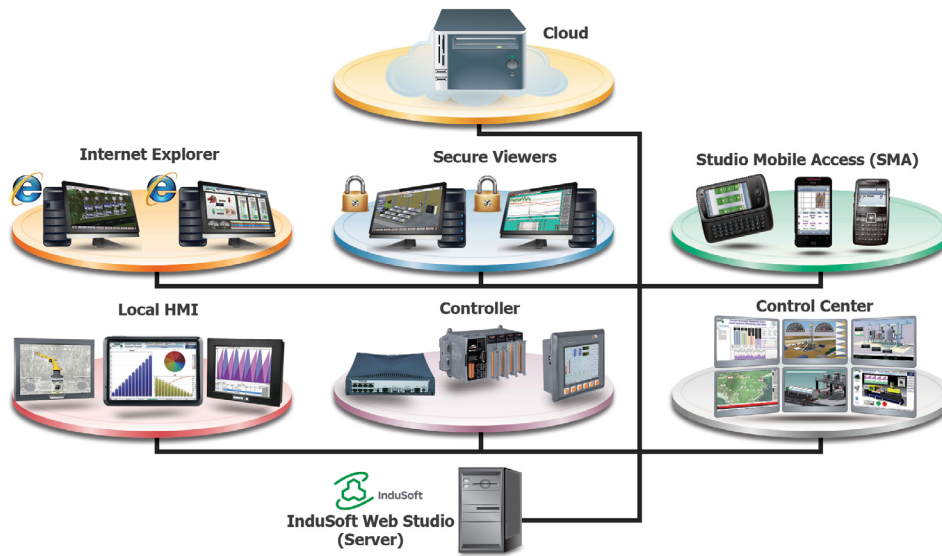
Environment monitoring, factory automation, building management system, industrial machine control, etc.



InduSoft Features

IWS applications run on microcomputers connected in real-time to machines or processors through WinPAC programmable controllers, remote I/O devices, and other data acquisition equipment. These applications consist of animated operator-interface screens, rollable I/O devices, an application tags database, and optional modules such as alarm monitors, trend charts, recipes, schedulers, and a security system.

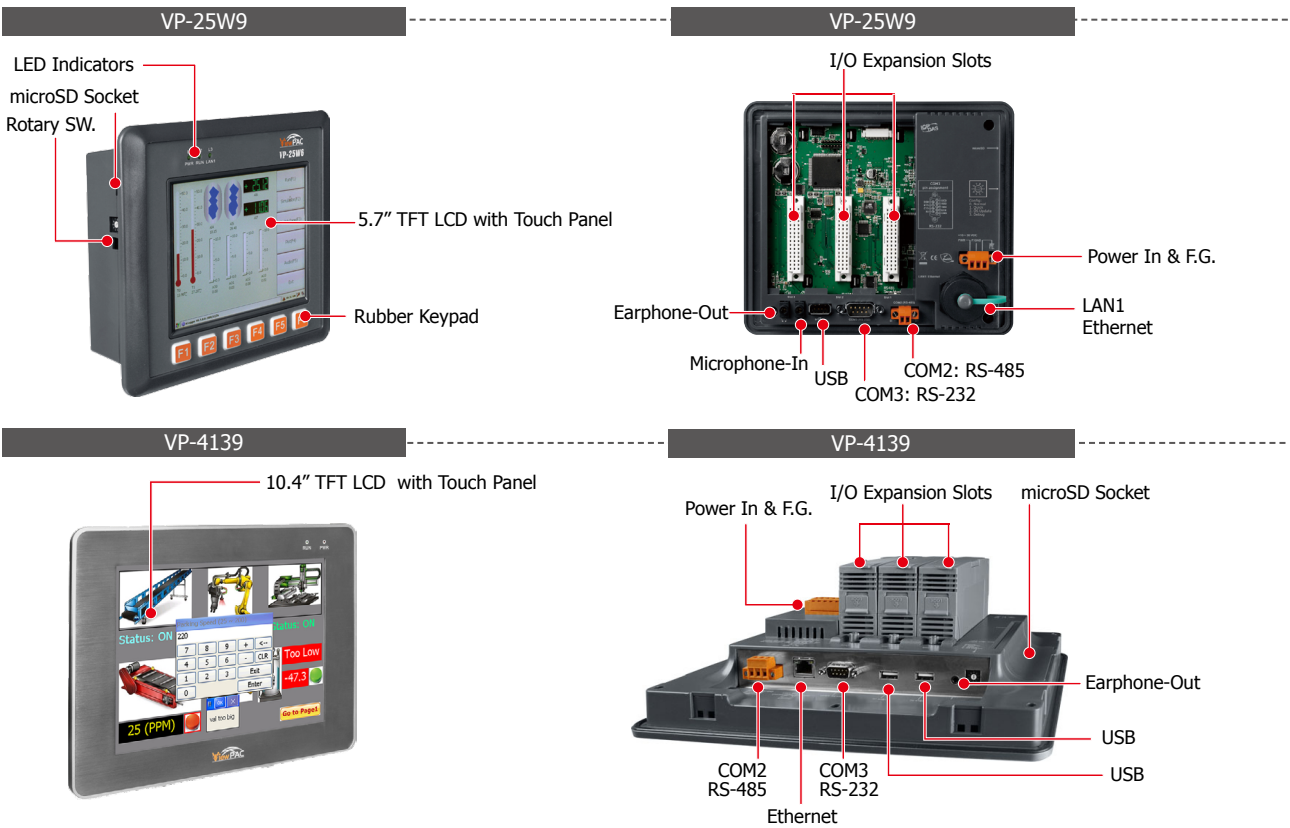
- Intuitive script language with more than 100 standard functions is provided.
- Conform to industry standards such as Microsoft.NET, OPC, DDE, ODBC, XML.
- Full-Featured WinCE-based run-time environment (CE View).
- Dynamic library of symbols - customizable.
- ActiveX container (Windows NT/CE).
- Automatic e-mail (SMTP) and dial-up connection interface supported.
- Provide multi-level security for applications, including the Internet and Intranet.



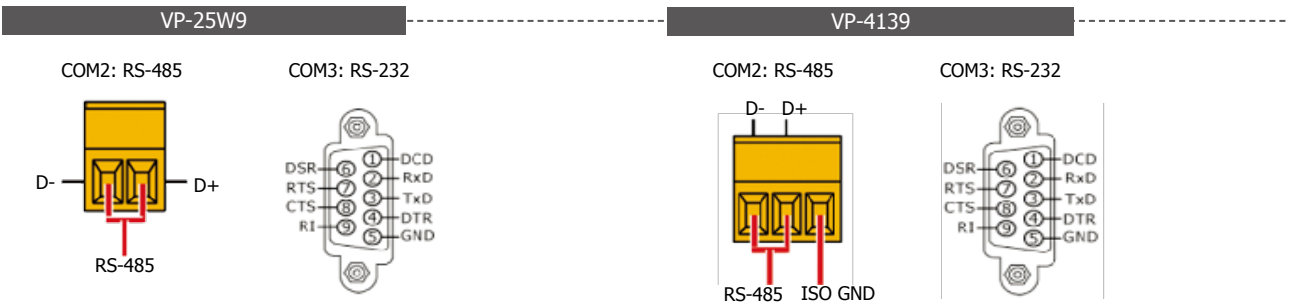
Specifications

Models	VP-25W9	VP-4139
System Software		
OS	Windows CE 5.0	
.Net Compact Framework	3.5	
Embedded Service	FTP server, Web server (supports VB script, JAVA script), Embedded SQL server	
SDK Provided	DII for eVC, DII for Visual Studio.Net 2005/2008	
Multilanguage Support	English, German, French, Spanish, Russian, Italian, Korean, Simplified Chinese, Traditional Chinese	
Development Software		
InduSoft Software		
InduSoft Web Studio Runtime		
Others	Options: Microsoft EVC++4.0 or VS.NET 2003/2005/2008 (VB.NET 2003/2005/2008, C#.NET 2003/2005/2008)	
CPU Module		
CPU	PXA270 or compatible (32-bit and 520 MHz)	
SDRAM	128 MB	
Dual Battery Backup SRAM	512 KB (for 5 years data retain)	
Flash	96 MB (64 MB for OS image, 31 MB for built-in Flash disk, 1 MB for registry)	128 MB
EEPROM	16 KB; Data Retention: 40 years; 1,000,000 erase/write cycles	
Expansion Flash Memory	microSD socket with one 4 GB microSD card (support up to 16 GB microSDHC card)	
RTC (Real Time Clock)	Provide seconds, minutes, hours, day of week/month, month and year, valid from 1980 to 2079	
Hardware Serial Number	Yes, 64-bit Hardware Serial Number	
Dual Watchdog Timer	Yes	
Rotary Switch	Yes (0 ~ 9)	
Communication Interface		
Ethernet	RJ-45 x 1, 10/100 Base-TX (Auto-negotiating, Auto MDI/MDI-X, LED indicators)	
USB 1.1 (host)	1	2
USB 1.1 (client)	-	1
COM 2	RS-485 (D2+, D2-); self-tuner ASIC inside; 2500 VDC Isolated.	
COM 3	RS-232 (Rx/D, Tx/D, CTS, RTS, DSR, DTR, CD, RI and GND); Non-isolated	
MMI (Man Machine Interface)		
LCD	5.7" TFT (Resolution 640 x 480)	10.4" TFT (Resolution 800 x 600)
Touch Panel	Yes	
Rubber Keypad	6 Keys	-
Audio	Microphone-In and Earphone-Out	Earphone-Out
LED Indicators	3 Dual-Color LEDs (PWR, RUN, LAN1, L1, L2, L3; L1~L3 For User Programmable)	2 Dual-Color LEDs (PWR, RUN)
I/O Expansion Slots		
Slot Number	3 (For High Profile I-8K and I-87K Modules Only)	
Mechanical		
Dimensions (W x L x H)	182 mm x 158 mm x 125 mm	293 mm x 231 mm x 129 mm
Ingress Protection	Front panel: IP65	
Environmental		
Operating Temperature	-20 ~ +70°C	
Storage Temperature	-30 ~ +80°C	
Ambient Relative Humidity	10% ~ 90% RH, non-condensing	
Power		
Input Range	+10 ~ +30 VDC	
Isolation	1 kV	
Capacity	2.5 A, 5 V supply to I/O expansion slots	
Consumption	7.2 W (0.3 A @ 24 VDC)	8.5 W

Appearance



Pin Assignment



Ordering Information

InduSoft Default Runtime License: 300 Tags, 3 Drivers	
VP-25W9-EN CR	5.7" LCD InduSoft Based ViewPAC with WinCE 5.0 and 3 I/O slots (OS: English) (RoHS)
VP-4139-EN CR	10.4" LCD InduSoft Based ViewPAC with WinCE 5.0 and 3 I/O slots (OS: English) (RoHS)
VP-25W9-TC CR	5.7" LCD InduSoft Based ViewPAC with WinCE 5.0 and 3 I/O slots (OS: Traditional Chinese) (RoHS)
VP-4139-TC CR	10.4" LCD InduSoft Based ViewPAC with WinCE 5.0 and 3 I/O slots (OS: Traditional Chinese) (RoHS)
VP-25W9-SC CR	5.7" LCD InduSoft Based ViewPAC with WinCE 5.0 and 3 I/O slots (OS: Simplified Chinese) (RoHS)
VP-4139-SC CR	10.4" LCD InduSoft Based ViewPAC with WinCE 5.0 and 3 I/O slots (OS: Simplified Chinese) (RoHS)
InduSoft Default Runtime License: 1500 Tags, 3 Drivers	
VP-25W9-EN-1500 CR	5.7" LCD InduSoft Based ViewPAC with WinCE 5.0 and 3 I/O slots (OS: English) (RoHS)
VP-4139-EN-1500 CR	10.4" LCD InduSoft Based ViewPAC with WinCE 5.0 and 3 I/O slots (OS: English) (RoHS)
VP-25W9-TC-1500 CR	5.7" LCD InduSoft Based ViewPAC with WinCE 5.0 and 3 I/O slots (OS: Traditional Chinese) (RoHS)
VP-4139-TC-1500 CR	10.4" LCD InduSoft Based ViewPAC with WinCE 5.0 and 3 I/O slots (OS: Traditional Chinese) (RoHS)
VP-25W9-SC-1500 CR	5.7" LCD InduSoft Based ViewPAC with WinCE 5.0 and 3 I/O slots (OS: Simplified Chinese) (RoHS)
VP-4139-SC-1500 CR	10.4" LCD InduSoft Based ViewPAC with WinCE 5.0 and 3 I/O slots (OS: Simplified Chinese) (RoHS)