



ECAN-240

ECAN-240 (Modbus TCP to 2-port CAN Bus Gateway)

Features

- Supports input voltage 10~30VDC
- Fully compatible with the ISO 11898-2 standard
- Includes built-in DIP-switch the can be used to enable/disable the terminal resistor
- Includes an RJ-45 Ethernet interface with auto-negotiation function
- Includes two CAN bus interfaces with 9 pin D-sub connector
- Provides the CAN bus ID filter function
- Provides the CAN bus bridge mode and listen only mode
- Provides a range of CAN bus Baud Rate from 10k bps to 1M bps adjustable via the rotary switch
- Provides the Modbus TCP Client/Server function
- Provides TCP/UDP pair connection function



Introduction

The ECAN-240 module is a Modbus TCP to 2-port CAN Bus Gateway. As its functionality, that provides communications via the Ethernet based on the Modbus TCP industrial protocol, meaning that the module can be easily integrated with an industrial network. The ECAN-240 module includes two CAN bus interfaces, meaning that more various CAN applications can be supported, such as a CAN bridge or a CAN message router. The CAN message router function means that the ECAN-240 module can be used to connect to four different CAN networks, ensuring they can communicate with each other.

Hardware Specifications

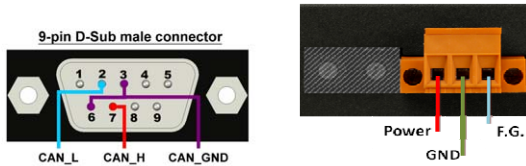
CAN Interface	
Channel	2 channels with 9 pins D-sub male connector
Baud Rate (bps)	10kbps to 1Mbps
Terminal Resistor	Built-in 120 ohm terminal resistor, enabled/disabled via DIP-Switch
Isolation	3 kV VDC for DC to DC, 2500 Vrms for photo couple
CAN Bus Specification	ISO 11898-2 CAN 2.0A and CAN 2.0B
Ethernet	
Controller	10/100Base-TX Ethernet Controller (Auto-negotiating, Auto_MDIX)
Connector	RJ-45 with Ethernet indicator
Protocol	Modbus TCP Client/Server, TCP, UDP, HTTP
Socket connections	8 for TCP, 1 for UDP
LED Indicator	
LED	Power (1), CAN Bus Status (2), CAN Bus Tx (2), CAN Bus Rx (2) and Ethernet Status (RJ-45) (2)
Power	
Power	Unregulated +10 ~ +30 VDC, (0.08)@24VDC, 2W
Protection	Reverse polarity protection, Over-voltage brown-out protection
Mechanical	
Installation	DIN-Rail
Dimension (W x L x H)	106.8mm x 146.8mm x 25.9mm
Environment	
Operating Temperature	-25°C to +75°C
Storage Temperature	-40°C to +80°C
Relative Humidity	10 to 90% RH, Non-condensing

Web Configuration

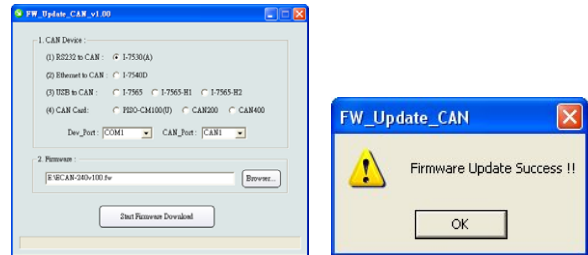


- Ethernet, CAN, and basic Settings
- Modbus TCP Server Settings
- Modbus TCP Client Settings
- Pair Connection Settings

Wiring and Pin Assignments



Firmware update function

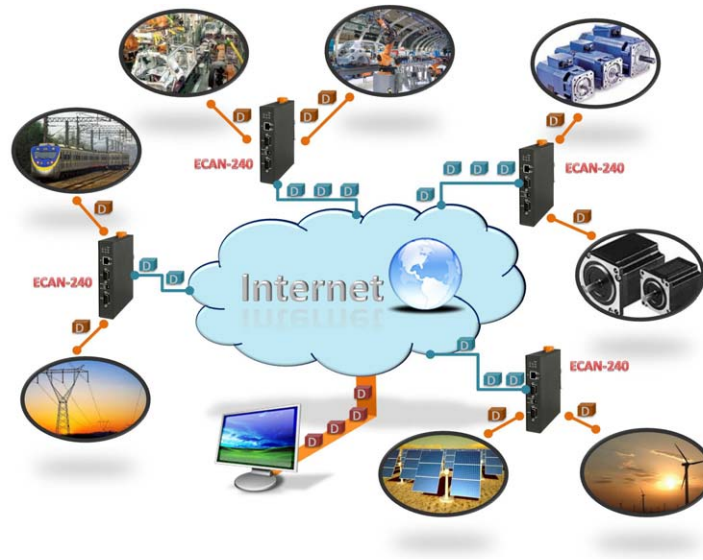


- Firmware update via CAN bus

Dimensions (Units: mm)



Application



Ordering Information

ECAN-240	Modbus TCP to 2-port CAN Bus Gateway
----------	--------------------------------------