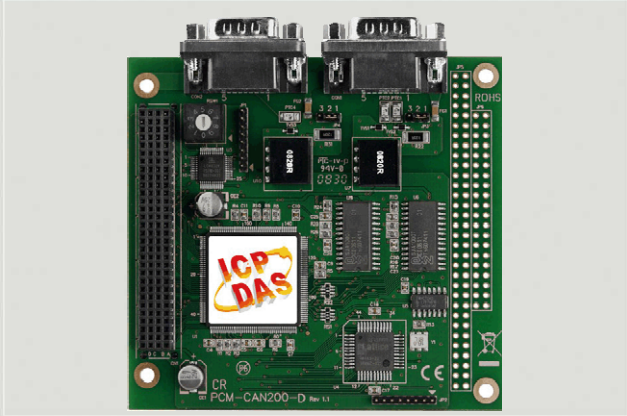




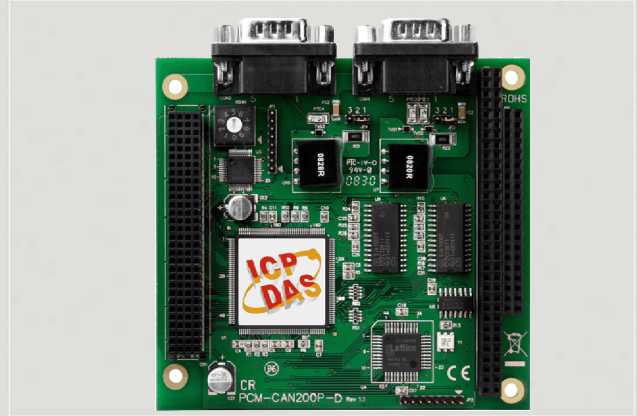
CAN Series Products



PCI104/PC104+ CAN Communication Module



PCM-CAN200-D



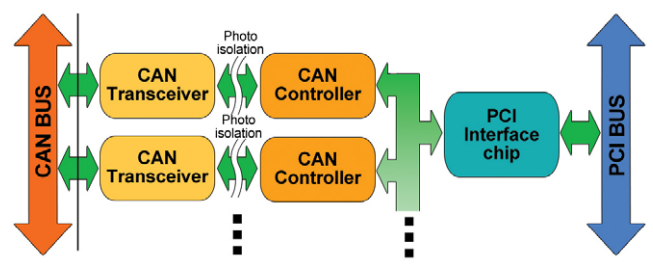
PCM-CAN200P-D

The PCM-CAN200 can represent a CAN solution on a high quality PCI104/PC104+ hardware in industrial environment compliant with CAN 2.0A and CAN 2.0B specification. It has 2 independent CAN bus communication ports with 9-pin D-sub connector, and has the ability to cover a wide range of CAN applications. Besides, PCM-CAN200 uses the CAN controller Phillips SJA1000T and transceiver 82C250, which provide bus arbitration, error detection with auto correction and re-transmission function. It can be installed in both 3.3 V and 5 V PCI slot and supported truly "Plug & play".

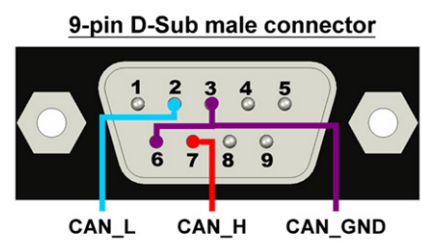
Features

- PCI104/PC104+ compliant
- 9-pin male D-sub connector
- Compatible with CAN 2.0 parts A and B
- Fully compatible with ISO 11898-2 standard
- Support CAN baud from 10 kbps ~ 1 Mbps
- 2500 Vrms photo couple isolation on the CAN bus
- Built-in jumper to select 120 Ω terminal resistor
- 1 kV galvanic isolation
- 2 independent CAN channels
- Direct memory mapping to the CAN controller
- Provide VB6.0, VC++6.0, Delphi, BCB6.0 demos
- Driver support Windows XP/7/8/10, Linux

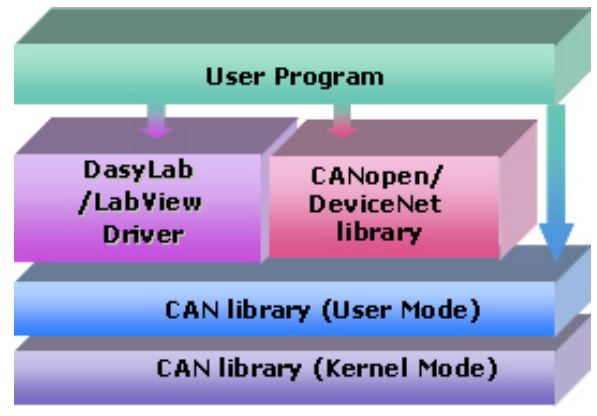
Hardware architecture



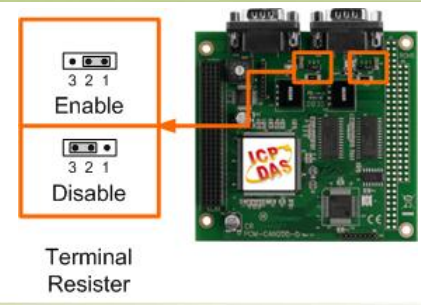
Pin Assignments



Software Layer



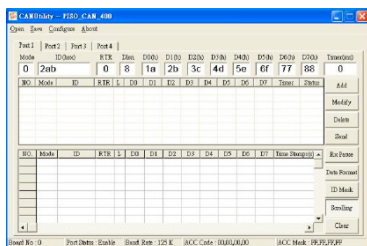
Terminal Resistor



Hardware Specifications

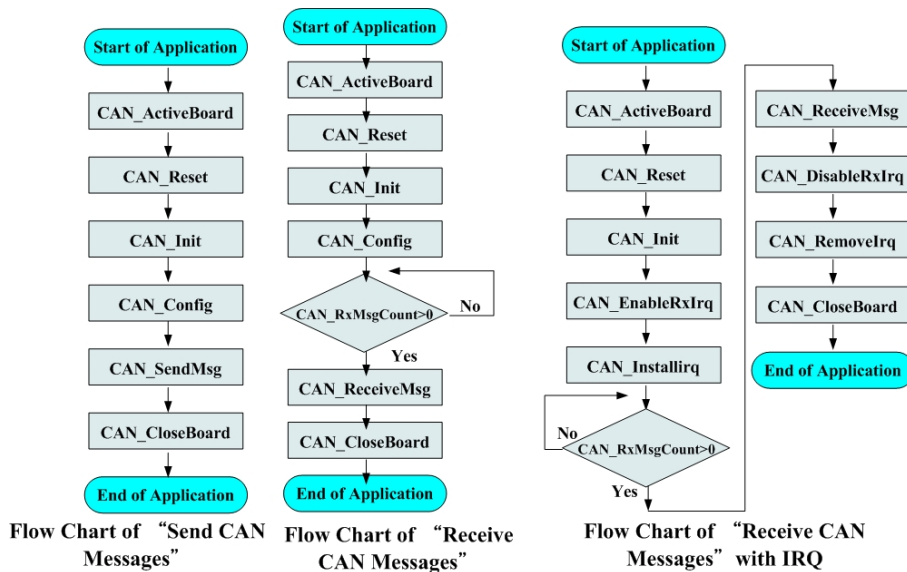
Model Name	PCM-CAN200-D	PCM-CAN200P-D
Bus Interface		
Type	PCI-104	PC-104
CAN Interface		
Controller	NXP SJA1000T with 16 MHz clock	
Transceiver	NXP 82C250	
Channel number	2	
Connector	9-pin male D-Sub (CAN_L, CAN_SHLD, CAN_H, N/A for others)	
Baud Rate (bps)	10 k, 20 k, 50 k, 125 k, 250 k, 500 k, 800 k, 1 M (allow user-defined baud rate)	
Terminal Resistor	Jumper for 120 Ω terminal resistor	
Power		
Power Consumption	250 mA @ 5 V	
Mechanism		
Dimensions	91mm x 22mm x 96mm (W x L x H)	
Environment		
Operating Temp.	0 ~ 60 °C	
Storage Temp.	-20 ~ 70 °C	
Humidity	5 ~ 85% RH, non-condensing	

Utility



- Can be a CAN system monitor tool with CAN cards
- It is a good tool to test CAN system
- Send/Receive/Record CAN messages
- Provide cyclic transmission function
- Record the CAN messages with filtered ID and time stamp

Flow Diagram for Applications



Ordering Information

PCM-CAN200-D CR	2-Port Isolated Protection CAN Communication PCI-104 Module with 9-pin Male D-sub connector (RoHS)
PCM-CAN200P-D CR	2-Port Isolated Protection CAN Communication PC-104+ Module with 9-pin Male D-sub connector (RoHS)