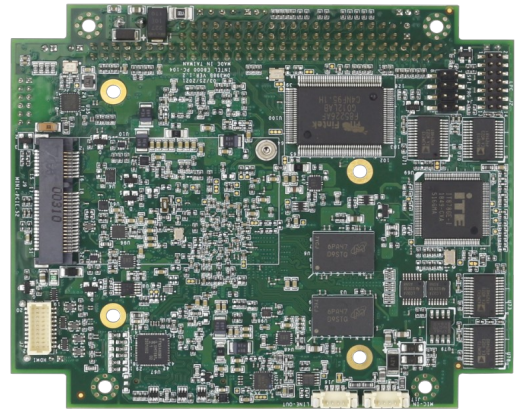
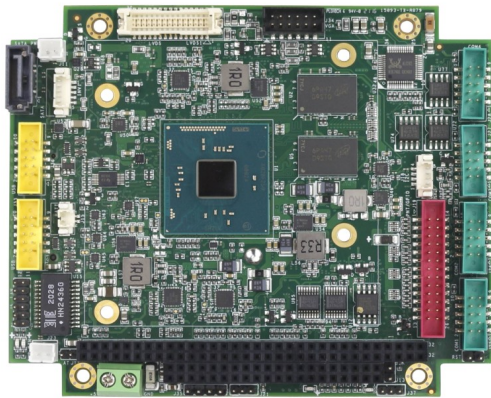


# IBW-6954



## Specifications

CPU	Intel® Atom™ x5-E8000 2.00GHz(Burst) 1.04GHz Quad Core Intel® Pentium® N3710 2.56GHz(Burst) 1.6GHz Quad Core Intel® Celeron® N3160 2.24GHz(Burst) 1.6GHz Quad Core
RAM	4GB DDR3L 1600
BIOS	UEFI BIOS
Bus	ISA Bus x1 MiniPCIe(full-size) x1
Display	Hardware decoding: H.265, MPEG2, MVC, VC-1, VP8, WMV9, and JPEG/MJPEG formats Hardware encoding: H.264, MVC, and JPEG/MJPEG formats VGA: resolution up to 1920 x 1200 @ 60Hz HDMI: resolution up to 2560 x 1600 @ 60Hz, 24bpp LVDS: resolution up to 1920 x 1200 @ 60Hz, in dual LVDS bus mode
LAN	RTL8111H GbE
HD Audio	Realtek ALC262 VD
Disk Support	SATA device mSATA device (Option)
I/O Interface	COM x4 (2 for RS232/422/485) I <sup>2</sup> C x1 USB 2.0 x4 Audio (Line-out/MIC-in) Parallel/16-bit GPIO x1 (Option)
Connectors	5.4mm 7-pin Standard SATA connector x1 2.0mm 10-pin box header for COM x4 2.0mm 2-pin header for Reset x1 1.25mm 4-pin header for I <sup>2</sup> C x1 HDMI connector x1 Mini PCIe slot x1 Terminal block for Power input x1 2.0mm 12-pin header for VGA port x1 2.0mm 12-pin header for LAN port x1 2.0mm 2-pin box header for SATA Power x1 2.00mm 10-pin box header for USB x4 1.25mm 2-pin header for COMS battery x1 2-pin header for Speaker 2.0mm 26-pin box header for Printer x1 2.0mm 2-pin header for Power button x1 2.0mm 2-pin box header for AT/ATX mode x1 1.25mm 4-pin wafer for MIC-in/Line-out x2 1.25mm 30-pin wafer for LVDS x1 Standard PC/104 connector x1
Power Requirement	5VDC
Operating Temperature	0°C to +55°C (with airflow)
Dimension	116mm x 96mm
Weight	81g
O/S Support	Windows 10 Windows 7 (64bits) Linux

## Ordering Information

PART NO.	CPU Speed	DRAM (DDR3L)	Disk Support	Display	GigaLAN	COM	USB 2.0	I <sup>2</sup> C	Parallel	Audio
IBW-6954-E4	(Intel® Atom™ x5-E8000) 1.04GHz		mSATA	VGA						
IBW-6954-A4	(Intel® Pentium® N3710) 1.60GHz	4GB	SATA device	LVDS	1	4	4	1	1	MIC-in Line-out
IBW-6954-B4	(Intel® Celeron® N3160) 1.60GHz		Micro SD	HDMI						
CABLE-SET 6954	Cable set for IBW-6954 (RS232 x4, USB x2, PRINT, Audio x2, LAN, VGA)									