

# POWERGUARD 93 IP PDU Series

*PWG-9316-318-96-SIP*

## *Exagate Outlet Based Power Metering Single Phase IP PDU*

Exagate POWERGuard 93 Series IP Power Distribution Units, a power monitoring solution of Exagate, monitors power per outlet on IP PDU and environmental risks in rack cabinets.

### **Monitoring**

Current, voltage, frequency, temperature, humidity, air flow are some of the values that should be monitored and managed in a rack cabinet.

### **Setting Alarms**

In case any of values monitored are out of minimum-maximum values defined by administrator, system gives alarm and informs predefined users via either an e-mail and /or SNMP etc...

### **Features**

<b>Metering</b>	Voltage (V), Current (A), Frequency (f), Active Power (kW), Real Power (kVA), Energy (kWh), Power Factor(PF)
<b>Metering per PDU</b>	Yes
<b>Metering per Branch Circuit Breaker</b>	Yes
<b>Metering per Outlet</b>	Yes
<b>Switching per Outlet</b>	No
<b>Metering Accuracy</b>	+/- 1%
<b>Management</b>	SMTP; SNMP; Telnet; HTTPs; SSH; SMARTPack
<b>LCD Display</b>	Color graphic TFT display for any value and message displaying
<b>Network Connection</b>	RJ-45 (10/100 BaseT Ethernet)
<b>Cascading</b>	Yes
<b>Supported Environmental Sensors</b>	Temperature, Humidity, Air flow, Water detection, Smoke detection, Door contact

### Operational Properties

<b>Input Voltage</b>	220-240 VAC, 50/60 Hz, 1 phase
<b>Input Current</b>	16 A
<b>Power Capacity</b>	3,7 kVA
<b>Input Connection</b>	16 A, 5-pin IEC-309 with 1.8 meters power cord
<b>Output Sockets</b>	Eighteen (18) x C13 and Six (6) x C19 outlets
<b>Maximum Output Current (outlet)</b>	IEC-320-C13: 10 A; IEC-320-C19: 16 A
<b>Maximum Output Current (phase)</b>	16A
<b>Maximum Output Current (branch circuit)</b>	16A
<b>Branch Circuit Protection</b>	One (1) x 16 A hydro magnetic circuit breaker

### Physical Properties

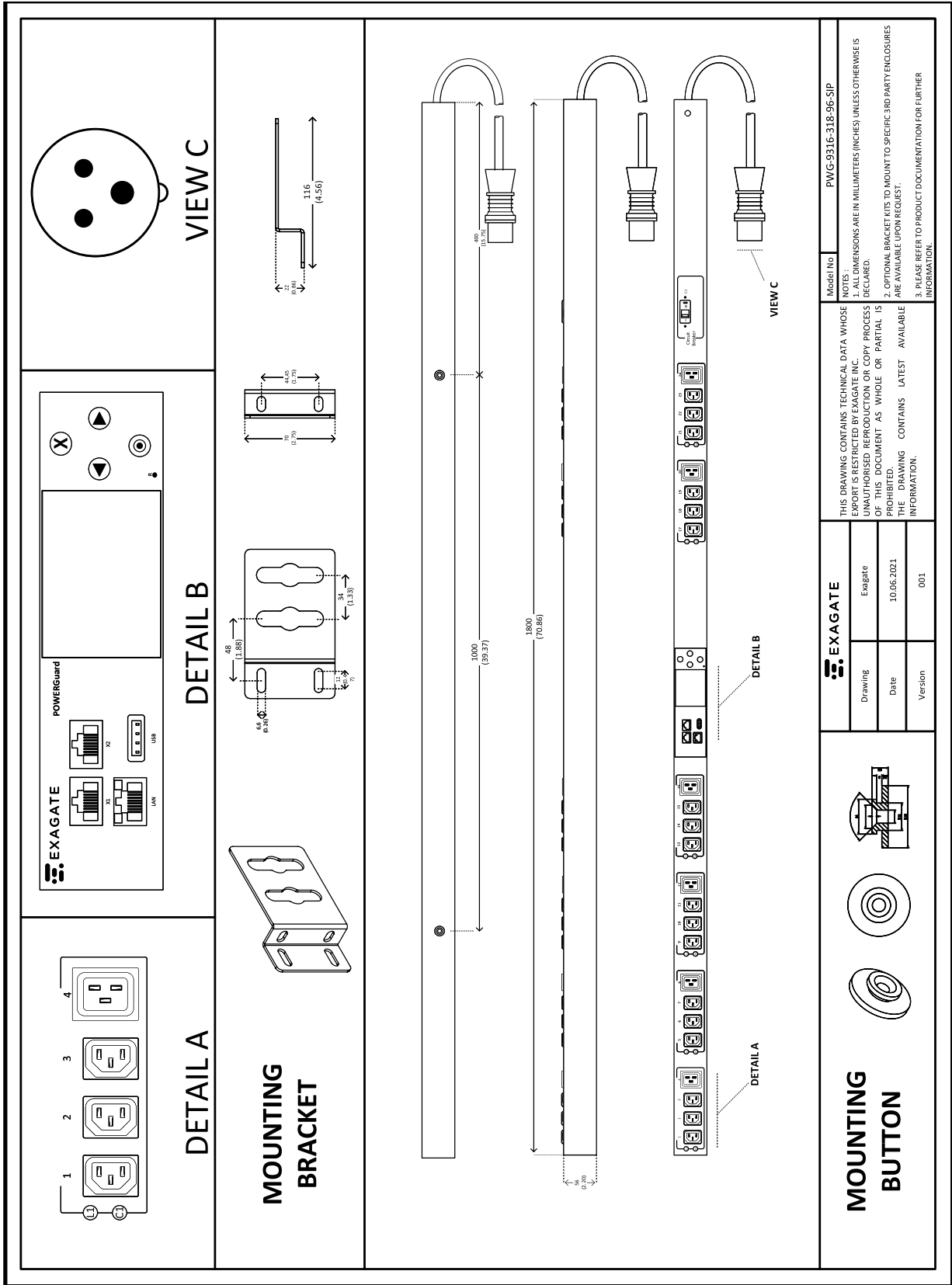
<b>Dimensions (H x W x D)</b>	ZeroU, (1780 x 56 x 56) mm
<b>Color</b>	Black powder coating
<b>Weight</b>	Approx. 6 kg

### Environmental Properties

<b>Operating Temperature Range</b>	0-65 °C
<b>Operating Humidity Range</b>	0-85 % RH
<b>Storage Temperature Range</b>	0-75 °C
<b>Storage Humidity Range</b>	0-90 % RH

### Compatible Sensors

<b>SYSG2010</b>	Temperature & Humidity Sensor
<b>SYSG2020</b>	Temperature Sensor
<b>SYSG2030</b>	Air Flow Module
<b>SYSG2050</b>	Combo Module
<b>SYSG6031</b>	Water Detect Cable (1 meter)
<b>SYSG6032</b>	Water Detect Cable (2 meters)
<b>SYSG6035</b>	Water Detect Cable (5 meters)
<b>SYSGAC04</b>	Smoke Detector
<b>SYSGAC05</b>	Door Detector



PRODUCT SKU #	DESCRIPTION
PWG-9316-318-96-SIP	POWERGuard IP Power Distribution Unit with PDU Based Metering

## LIMITED PRODUCT WARRANTY

All Exagate products are covered with 2 years limited guarantee from the date of original purchase. (Warranty duration may change depending on your country) Your sales or delivery receipt, showing the date of purchase of product is your proof of purchase. Exagate is obliged to repair or replace the defective hardware (or any part of it's) with no charge to owner.

### Conditions Void of Warranty

- Damages on unit, cable or screen.
- Defections due to electrical wiring and/or city network.
- Interference to unit by non-authorized staff.
- Any problems caused by act of nature.
- Misusage of unit stated by the user manual.
- Removal or destruction of serial number, warranty labels.
- Any kind of modifications on unit.