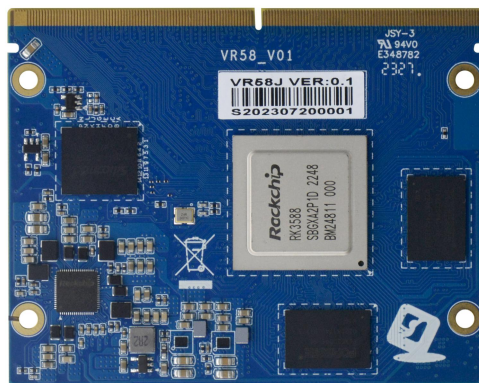
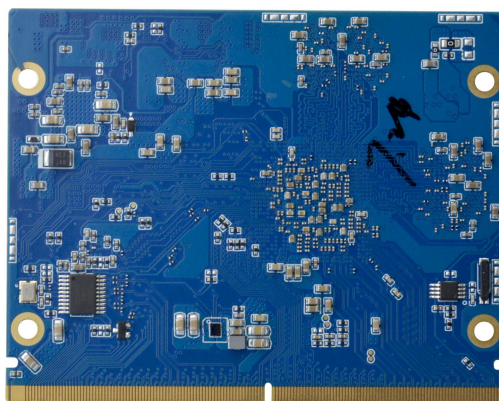


VR58 VER:0.1



VR58 VER:0.1



VR58 VER:0.1

<b>Model No.</b>	VR58J VER:0.1	
<b>Processor</b>	RK3588 quad cores Cortex-A76, 2.4GHz, quad cores Cortex-A55,1.7GHz (total 8 cores) processor	
<b>Chipset</b>	RK3588 SOC	
<b>Memory</b>	Onboard LPDDR4 8GB(4GB/16GB optional) Memory, up to 32GB	
<b>Display</b>	ARM Mali-G610 MP4 quad cores GPU, support OpenGL ES3.2 / OpenCL 2.2 / Vulkan1.1, 450 GFLOPS	
	Support HDMI/LVDS/EDP/VGA/MIPI display, details please refer to expansion board's specification	
	Support 4-screen simultaneous display and 4-screen differential display	
<b>Ethernet</b>	10/100/1000Mbps Ethernet interface	
<b>WIFI</b>	Support Bluetooth/WiFi module/WiFi6 module	
<b>Storage</b>	1* eMMC5.1 storage chip 64G (16GB/32GB/64GB/128GB optional)	
	Support TF card expansion	
<b>Audio</b>	Support Line out, MIC, power amplifier, support 2Ω5W/4Ω3W dual channel, details please refer to expansion board's specification	
<b>Expansion Slot</b>	314pin MXM connector, transfer signals from the SoM board to the IO board	
<b>IO</b>	PCIE3.0	1*PCIE3.0 4I/2*2L
	PCIE2.0	3*PCIE2.0 1L/SATA3.0
	MIPI_RX	1*MIPI input
	MIPI_TX	2*MIPI output
	HDMI2.1 output	2*HDMI0-2.1-TX/EDP
	HDMI2.1 input	1*HDMI-2.0-RX
	I2C	2*I2C
	LAN	1*LAN(gigabit)
	SDIO	2*SDIO
	USB3.0/DP	2*USB3.0/DP/TYPPEC
	USB2.0	4*USB2.0
	HDD_LED	1*HDD_LED
	IIS-CODEC	1*IIS-CODEC
	SPI	1*SPI
	PWM	2*PWM
	DEBUG	1*DEBUG
	ADC	2*ADC
RTC	1*RTC	

	CAN	2*CAN
<b>Power type</b>	DC input voltage 4V	
<b>OS</b>	Android 12, Ubuntu 20.04	
<b>operation temperature</b>	0°C~60°C	
<b>storage temperature</b>	-20°C~70°C	
<b>Working humidity</b>	5%-95% (Relative humidity, non condensing)	
<b>Dimensions</b>	65mm x 82mm	

## Ordering Information

NO.	Model	Processor	Frequency	Memory	eMMC	HDMI	LVDS	MIPI	EDP	WIFI	LAN	USB	COM	Power
1	VR58J VER:0.1	RK3588	2.4GHz	8G	64G	/	/	/	/	/	/	/	/	DC4V

## Mainboard Dimension Graphics

