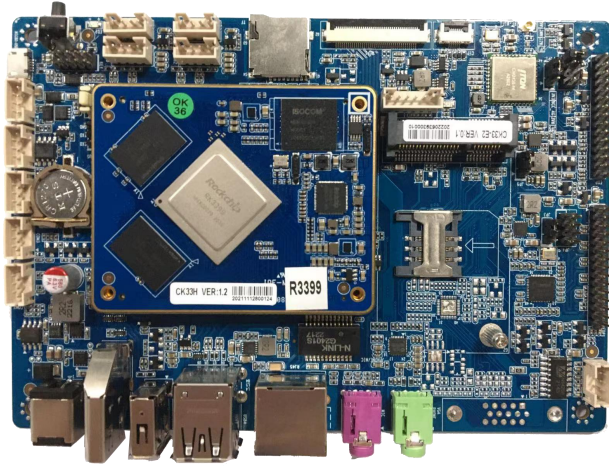
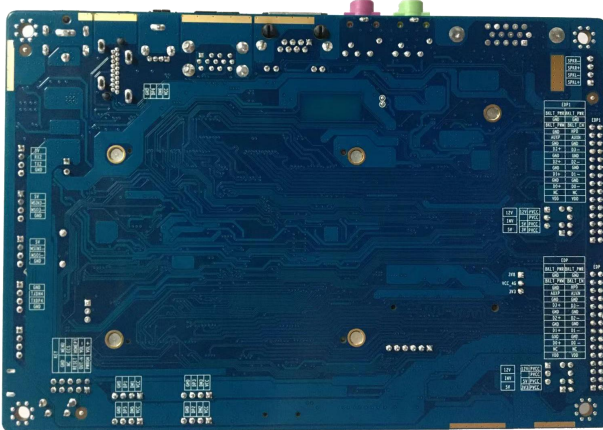


CK33-E2 VER:1.0 Specification



CH33H + CK33-E2 VER 1.0 Front View



CK33-E2 VER 1.0 Back View



CK33-E2 VER 1.0 Front IO View

Model No.	CK33-E2 VER:1.0
Display	1*HDMI, 2*EDP, 1*MIPI Support dual screen same display / dual screen different display
LAN	1* RTL8211F Gigabit Ethernet chip 1*WiFi / Bluetooth module
Storage	1* TF card slot, up to 128G
Audio	Onboard Everest ES8316 Audio chip, support Line-out, MIC, amplifier Amplifier support 2Ω5W dual channel
Expansion Slot	1* Mini-PCIE slot, support 4G module
Rear I/O Port	2* USB2.0, 1* USB3.0 1* HDMI 1* Gigabit LAN port 1* Line-out (green) 1* MICK (red) 1* 12V DC_In port, support 12V power input output
Front I/O Port	1* TF card slot 1* MICRO_USB2.0 1* Power button
Internal I/O Port	2* EDP port, 2*15pin 4* USB2.0 2* RS232 COM port, 1*4pin 1*RS485 COM port, 1*4pin 1*TTL COM port, 1*4pin 1* RJ11 port, 1*4pin 1* MIPI port, FPC standard, 40pin, used for connecting with MIPI screen 1* CTP port, FPC standard, 6pin, used for connecting with touch screen 1* Screen backlight power supply port, 1*6pin 1* Amplifier port, 1*4pin 1* Front panel function button and LED indicator port, 2*5pin 1* SIM card slot
Power Type	DC 12V single power input
GPIO	Support 4-in 4-out GPIO
OS Support	Android 7.1、Android 10、Android 12、Ubuntu18.04、debian10 (need configure with CK33 board)

Operating Temp.	0°C~60°C
Storage Temp.	-20°C~70°C
Relative Humidity	5%-95% relative humidity, non-condensing
Dimension	148mm x 102mm

Order Information

NO.	Model	Processor	Frequency	Memory	EDP	MIPI	HDMI	LVDS	eMMC	WIFI	LAN	USB	COM	Power
1	CK33-E2 VER:1.0	/	/	/	2	1	1	/	/	1	1*8211F	7	4	DC12V