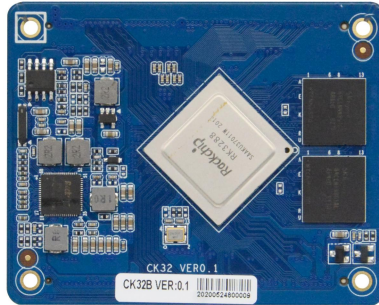
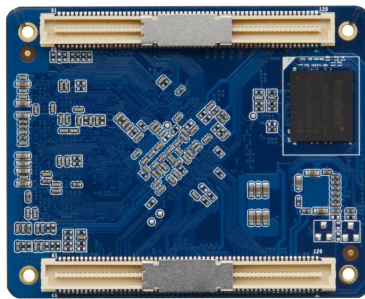


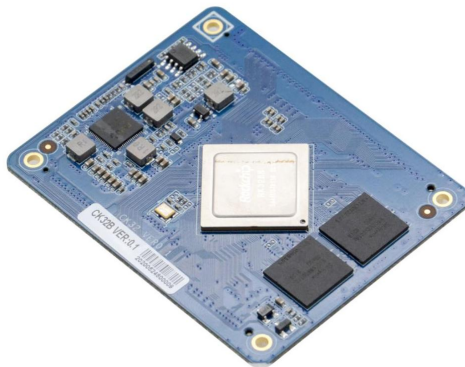
CK32B VER:1.0 Specification



CK32B VER:1.0 Front View



CK32B VER:1.0 Rear View



CK32B VER:1.0 Lateral View

| | |
|-------------------------|---|
| Model No. | CK32B VER:1.0 |
| Processor | CPU Rockchip RK3288 quad-core Cortex-A17 1.8GHz processor |
| Chipset | SOC |
| RAM | Onboard LPDDR3 2G Memory (1G/4G/8G optional) |
| Display | Integrated ARM Mali-T764 GPU, support OPENGL ES1.1/2.0/3.0, OPEN VG1.1, OPENCL, Directx11 Support HDMI/LVDS/EDP/VGA/MIPI display, details please refer to expansion I/O board specification Support dual screen same display, dual screen different display |
| LAN | Support 10/100/1000Mbps Ethernet port |
| WIFI | Support Bluetooth / WiFi module |
| Storage | 1* eMMC5.1 storage chip 16G (8GB/32GB/64GB/128GB optional) Support TF card expansion |
| Audio | Support Line-out, MIC, Amplifier, amplifier support 2Ω5W/4Ω3W dual channel, details please refer to expansion I/O board specification |
| Expansion Slot | 2* 120pin Express connector, for installing expansion I/O board |
| Power Type | DC input voltage 5V |
| OS | Android 7.1、Ubuntu18.04、Debian9 |
| Working Temp. | 0℃~60℃ |
| Storage Temp. | -20℃~70℃ |
| Working Humidity | 5%-95% relative humidity, non-condensing |
| Dimension | 67mm x 54mm |

Order Information

| NO. | Model | Processor | Frequency | Memory | eMMC | HDMI | LVDS | VGA | WIFI | LAN | USB | Power |
|-----|---------------|-----------|-----------|--------|------|------|------|-----|------|-----|-----|-------|
| 1 | CK32A VER:1.0 | RK3288 | 1.8GHz | 1G | 8G | / | / | / | / | / | / | 5V |
| 1 | CK32B VER:1.0 | RK3288 | 1.8GHz | 2G | 16G | / | / | / | / | / | / | 5V |
| 1 | CK32H VER:1.0 | RK3288 | 1.8GHz | 4G | 32G | / | / | / | / | / | / | 5V |
| 1 | CK32E VER:1.0 | RK3288 | 1.8GHz | 4G | 64G | / | / | / | / | / | / | 5V |
| 1 | CK32K VER:1.0 | RK3288 | 1.8GHz | 4G | 128G | / | / | / | / | / | / | 5V |