

A Pro Series

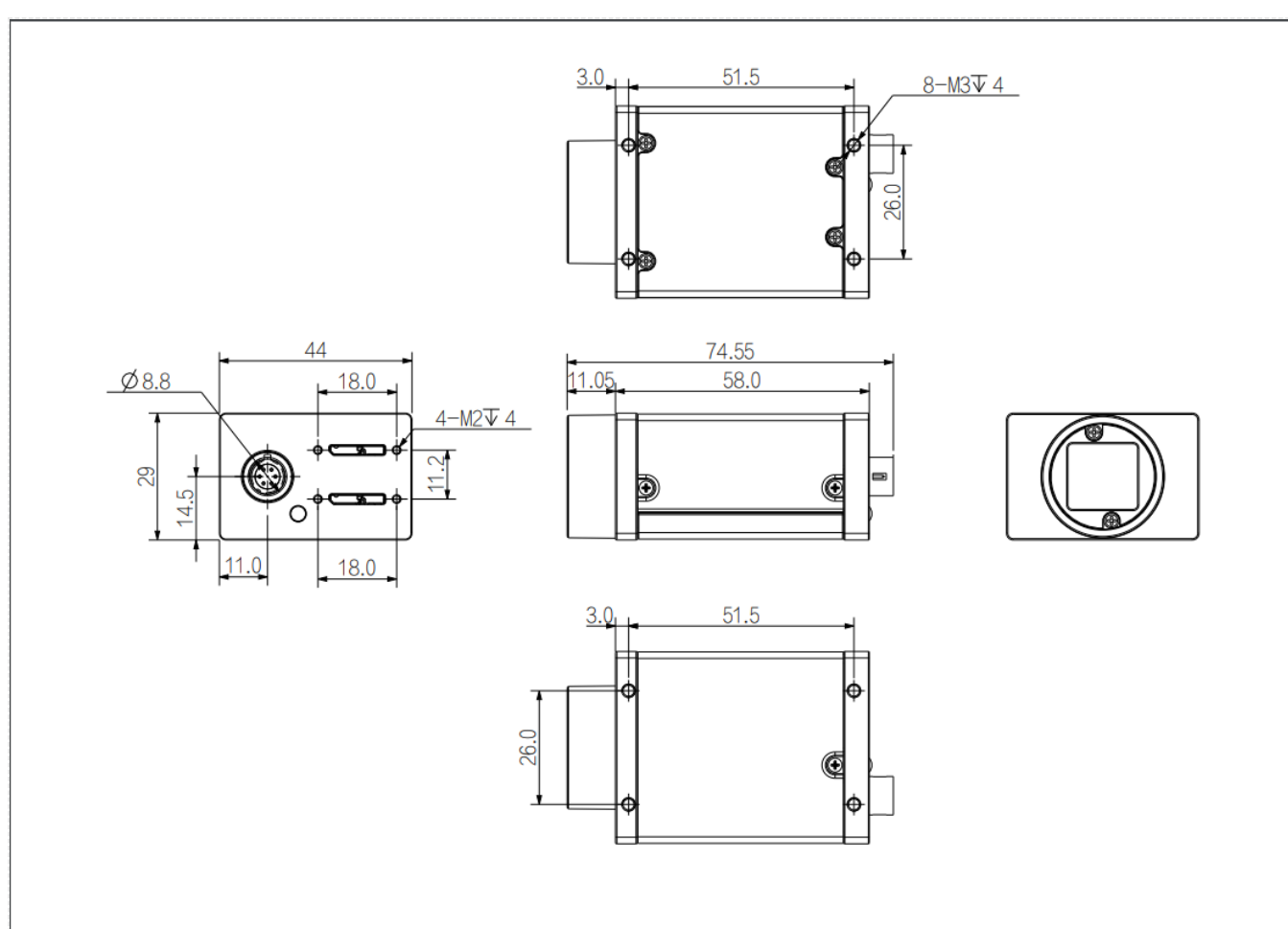
AH5B57MV200E



Features

- USB3.0 interface, 10Gbps theoretical transfer bandwidth, power supply via USB interface ;
- Compact size of 29mm*44mm*58mm;
- 256MB on-board cache for data transmission or image resend;
- Support Software Trigger/Hardware Trigger/Free Run Mode;
- Support ISP functions including Sharpness/Denoising/Gamma/LUT/BlackLevel Correction/TargetBrightness/Contrast etc.;
- Support multiple image data formats output/ ROI/Binning/Mirror, etc. ;
- Compatible with USB3.0 Vision protocol and GenICam standard;
- Comform to CE, FCC, RoHS;

Dimensions (mm)



Specification

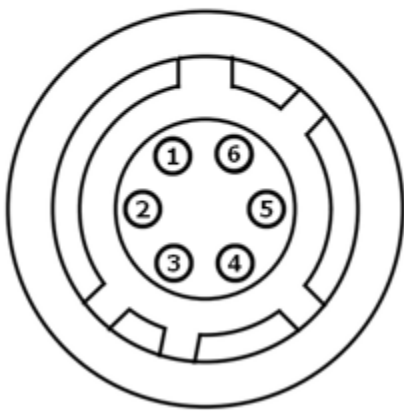
Model		AH5B57MV200E
Basic	Sensor	Gpixel
	Image Sensor	1.1"CMOS
	Shutter	Global
	Resolution	5120 × 5120
	Frame Rate	30fps
	Bit Depth	12
	Mono/Color	Mono
	Pixel Size	2.5 μm × 2.5 μm
Image	Pixel	25MP
	S/N Ratio	>35dB
	Dynamic Range	>64dB
	Image Format	Mono8/10/10Packed/12/12Packed
	Binning	Support
	ROI	Support
	X Flip	Support
	Y Flip	Support
	Gain	1~32
	Gamma	Range from 0 to 4, support LUT
	Exposure Time	5μS~1S
	Trigger Mode	Software Trigger/Hardware Trigger/Free Run Mode
	SPC	Support
Performance	User Setting	Support two sets of user-defined configurations
	Image Buffer	512M data cache
Port	Port	USB 3.0
	GPIO Interface	6 pin Hirose: 1 Opto-isolated input, 1 Opto-isolated output, 1 configurable input/output without opto isolation
	Lens Mount	C
Power	Power Supply	Power supply via USB connector /DC power supply by Hirose connector, with voltage range from 9V to 24V
	Power Consumption	≈4.85W (dual USB 3.0 interfaces provide power supply)
Structure	Product Dimensions	29mm×44mm×58mm (not including rear case connector)
	Net Weight	139g
Environment	Storage Temperature	-30°C~+80°C
	Operating Temperature	-30°C~+50°C

Connector Pin-out

Definitions of camera 6-pin ports:

Pin	Description	Features
1	-	+9VDC to 24VDC power supply
2	Line1	Opto-isolated input
3	Line2	GPIO (I/O can be configured for non-isolated software) ¹
4	Lineo	Opto-isolated output
5	-	Opto-isolated signal ground (ISO_GND)
6	-	Camera DC power ground and GPIO signal ground (GND)

Definition of 6-pin power port



Spectrogram

